



BENSHAW
Applied Motor Controls



MCP Series

MCP Multi-Motor Control Panels

Multi-Motor Control for Industrial Applications

Rapid | Rugged | Global

Integrated Control for Multi-Motor Applications

System solutions are a central focus of our business, and a competitive value for our customers.



Benshaw's success in the market is a direct result of our willingness as a company to think "beyond the box." We've made systems solutions a central focus of our business, and we make learning your business a top priority.

By focusing on the bigger picture, we gain a better understanding of your process, your control requirements and your market objectives.

We then apply that knowledge toward the development and production of complete, cost-effective fully integrated control solutions.

Customized solutions

Benshaw takes great pride in our ability to design and deliver custom control enclosures that truly complement the form and function of your equipment.

NEMA 1, 3R, 4 and 12 enclosures in unit-mount, console-mount, free-standing and wall-mount configurations are available to suit your needs.

Every MCP we design is carefully crafted to meet your dimensional requirements, prototyped and tested for fit and compliance with relevant safety standards.

Intelligent motor controls

Benshaw offers a full range of multi-motor control options including full-voltage starters, solid-state reduced-voltage starters and variable frequency drives. Reversing, two-speed, DC braking, wye-delta, synchronous and wound rotor control are also available.



A Range of Components for Customized MCP Solutions

Customized multi-motor control panels designed with high quality components and machine control solutions.

Solid-state soft starters

Benshaw is widely recognized as a world leader in solid-state starter technology. Benshaw's solid-state starters combine compact, user friendly design with the most advanced motor control functionality in the industry.



Variable frequency drives

Benshaw's family of variable frequency drives are available from 1HP to 900HP. Rugged and easy to use, these drives intuitive, menu-driven programming and robust power sections to meet any application.



Contactors, circuit breakers and more

Benshaw offers a full line of contactors, circuit breakers, pilot devices, overload relays, full-voltage and wye-delta starters. All components are UL labeled and ideally suited for integration by Benshaw into your customized MCP.



MCP Package Designed for Your Application

- | | |
|--|--|
| <ul style="list-style-type: none"> • Voltage Range: 230-575Vac • Single-phase or three-phase • Dual Rating: Normal and Heavy Duty (ND/HD) • Main Circuit Breaker Disconnect - rotary or flange • Enclosures: NEMA 4, NEMA 12, or NEMA 3R • 65kA rating • Starters: ATL, RVSS, Wye-Delta • Drives: wide range of VFDs | <ul style="list-style-type: none"> • RS485 ModBus communications • I/O and Network Expansion Options • Multi-Language Graphical Display • SCR Fail Power Through • USB Port and Data Logging • Ground Fault Option • Service Entrance Rated Option • Door Mounted Options: Keypads, Pilot Devices and more |
|--|--|

Common Applications for Multi-Motor Control in Industrial Settings

Continuous Process Industries

- Metal processing
- Chemical production
- Pharmaceutical production
- Food and beverage processing
- Printing and packing
- Fertilizer production
- Power generation
- Pulp/paper
- Textiles

HVAC and Refrigeration

- Chillers
- Pumps/compressor
- Cooling/condensing units
- Evaporator and exhaust fans
- Air handlers/terminal units/fan units
- Ice making equipment
- Cooling towers



Mining Aggregates and Cement

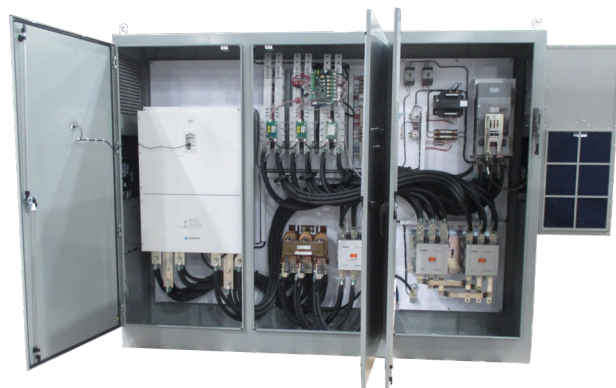
- Augers
- Compressors
- Conveyors
- Crushers
- Mills
- Pumps
- Vibrating screens

Oil and Gas Industry

- Exploration
- Onshore/offshore production
- Distillation/refining
- Transportation
- Storage

Water and Wastewater

- Pumps
- Separators
- Milliscreens
- Aerators



General Application Information Required

- Motor Information
- Disconnect Type: Combination/Non-Combination
- Starts required per hour
- Number of Motor Starters required
- Type of Application
- Power Source
- Control Options required
- Communications
- Enclosure Type
- Site Location
- Equipment Location: Indoor or Outdoor
- Operating conditions

The Benshaw Advantage



High-quality, low-cost control solutions backed by unparalleled engineering, service and support.

Since its founding in 1983, Benshaw has become a leader in custom motor and machine controls. Benshaw maintains its leadership position by listening carefully to our customers and responding with products, services and capabilities specifically designed to address their needs:

- Global production facilities with economy-of-scale benefits and sourcing capabilities
- Custom engineering and control integration expertise
- Prototyping and testing to meet all major regulatory compliance standards
- ISO-certified quality and automated efficiency across all products and services
- World-class 24/7/365 after-market training, service and support

Responsiveness

Benshaw's state-of-the-art manufacturing facilities combine the convenience of regional proximity with the cost advantages of a single, large-scale operation and an extensive global supply chain.

Single-source responsibility

From engineering and panel prototyping to enclosure and wire harness fabrication, machining and assembly, Benshaw offers the convenience and cost advantages of single-source responsibility across a full range of electro-mechanical starters, solid-state controls and drives.

Global sourcing

Benshaw's centralized materials management staff sources all raw materials and electrical components on a global basis, working to find the best possible value for our customers.

Standards compliance

Benshaw provides design and testing services to ensure UL, CSA or CE compliance and can acquire all of the necessary machine and motor control listings and certifications.

ISO certification

Benshaw invests heavily in state-of-the-art production and process control technologies to achieve the highest possible quality at the lowest possible cost. All operations are ISO certified, and all components, enclosures, parts and materials are inspected, tracked and kitted per ISO 9001 protocols to ensure timely processing of orders.

Automation efficiencies

Benshaw's proprietary workflow automation system streamlines the entire production process. The result? Increased operational efficiency, reduced opportunities for error, shorter lead times and lower panel costs than typically experienced through a local panel shop, component manufacturer or third-party integrator.

After-sale service and support programs

Benshaw's dedicated, knowledgeable technicians are available to answer questions and provide support before, during and after the sale.

Repairs, spares, field engineering, retrofits and training - whenever and wherever needed - are all part of our commitment.



Benshaw Group

Benshaw, Inc.

615 Alpha Drive
Pittsburgh, PA 15238 United States
Toll Free: 1-800-441-8235
Phone: 412-968-0100
Fax: 412-968-5415

Benshaw Canada Controls, Inc.

550 Bright Street East
Listowel, Ontario N4W 3W3 Canada
Toll Free: 1-877-291-5112
Phone: 519-291-5112
Fax: 519-291-2595

Benshaw - Aucom Ltd.

New Zealand

Benshaw - Aucom Ltd. International

- Germany
- Dubai
- Korea

www.Benshaw.com