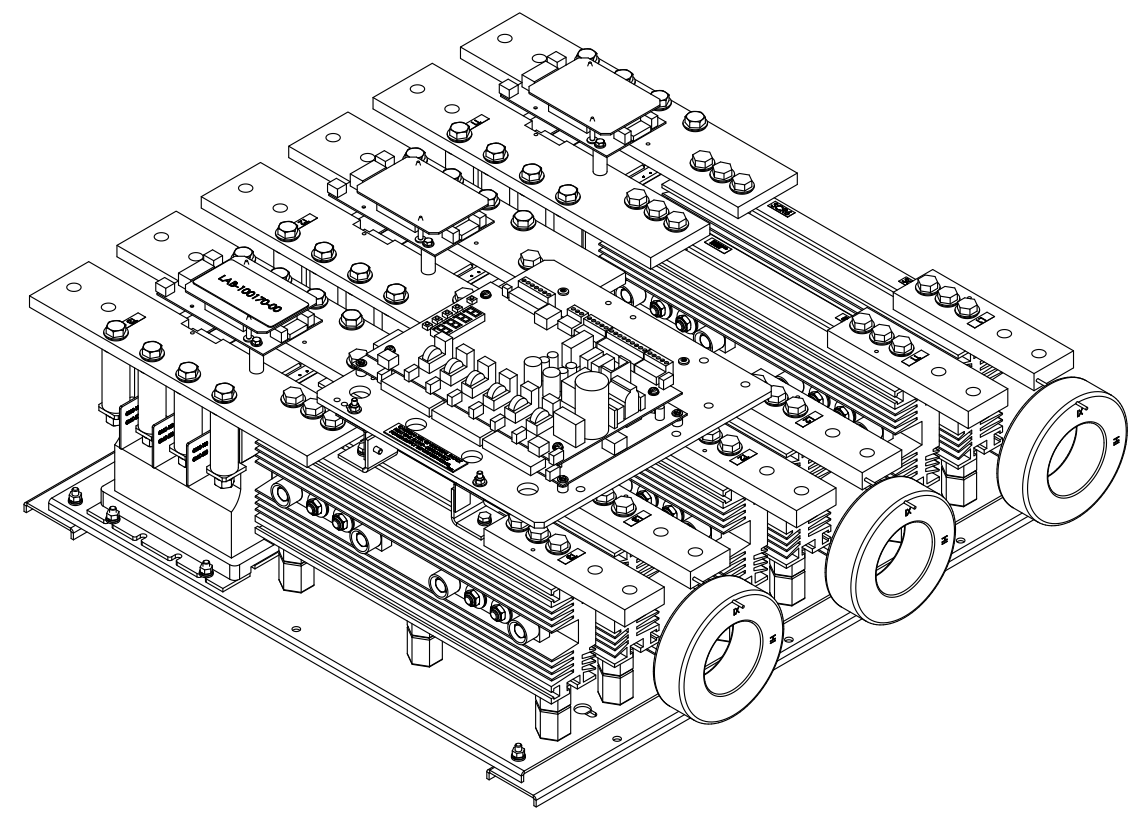
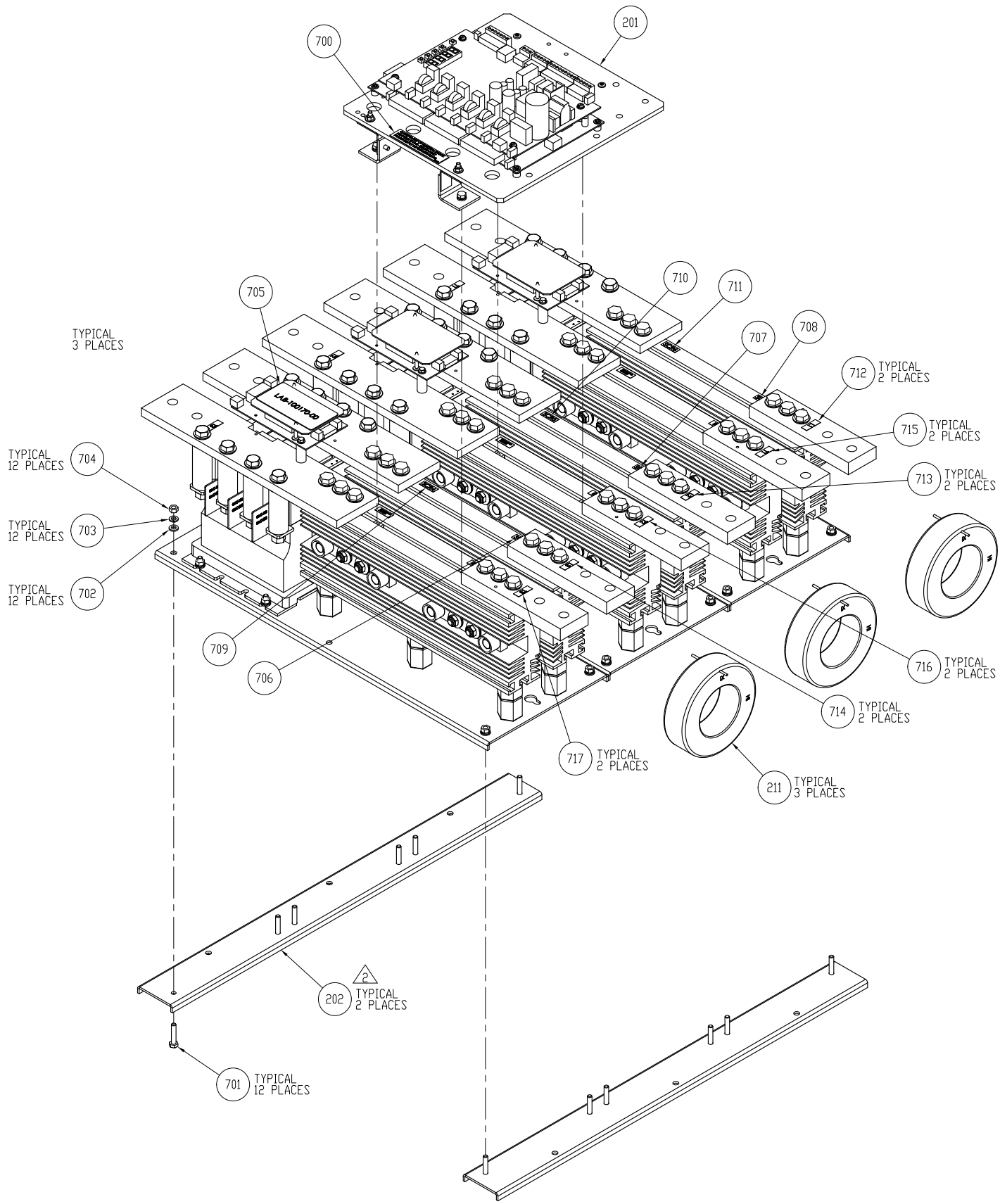


A
B
C
D
E
F
G
H
I
J
K
L
M
N



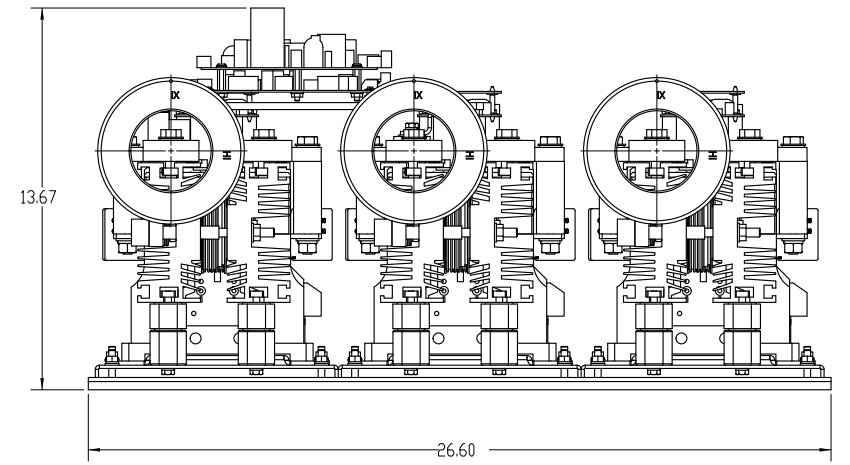
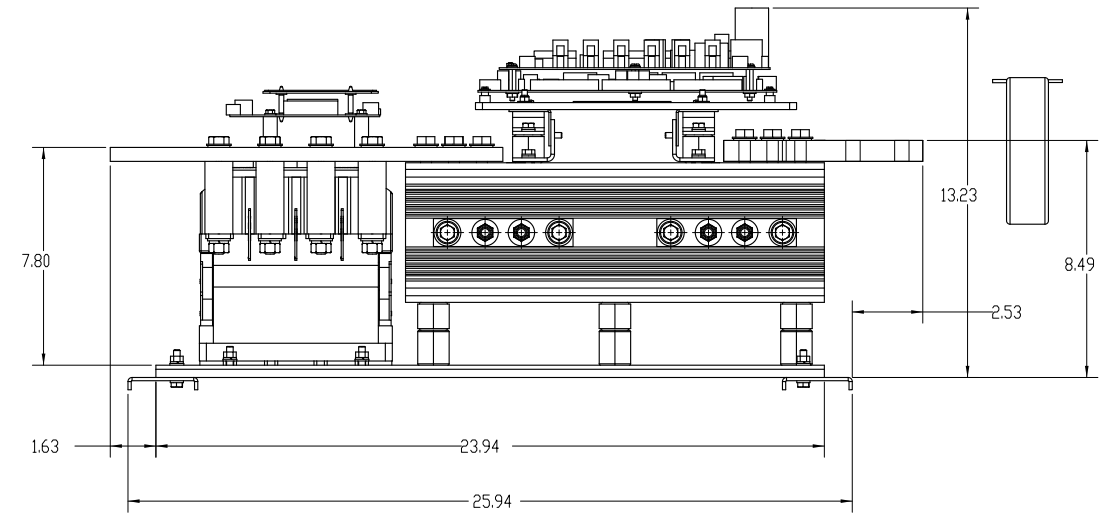
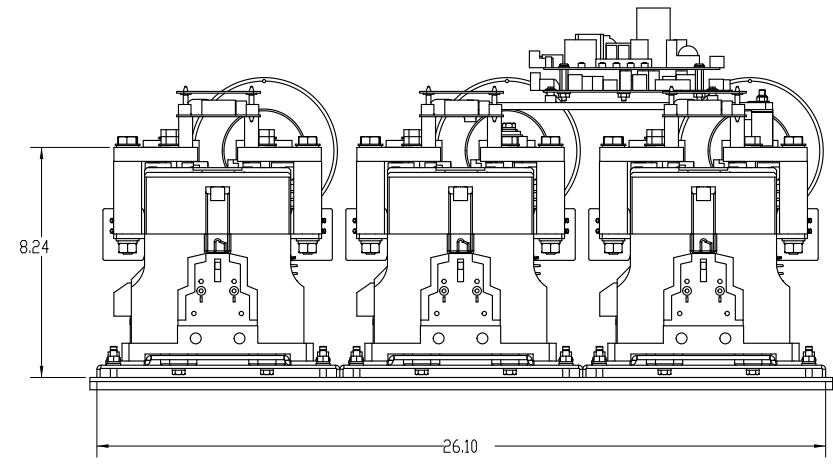
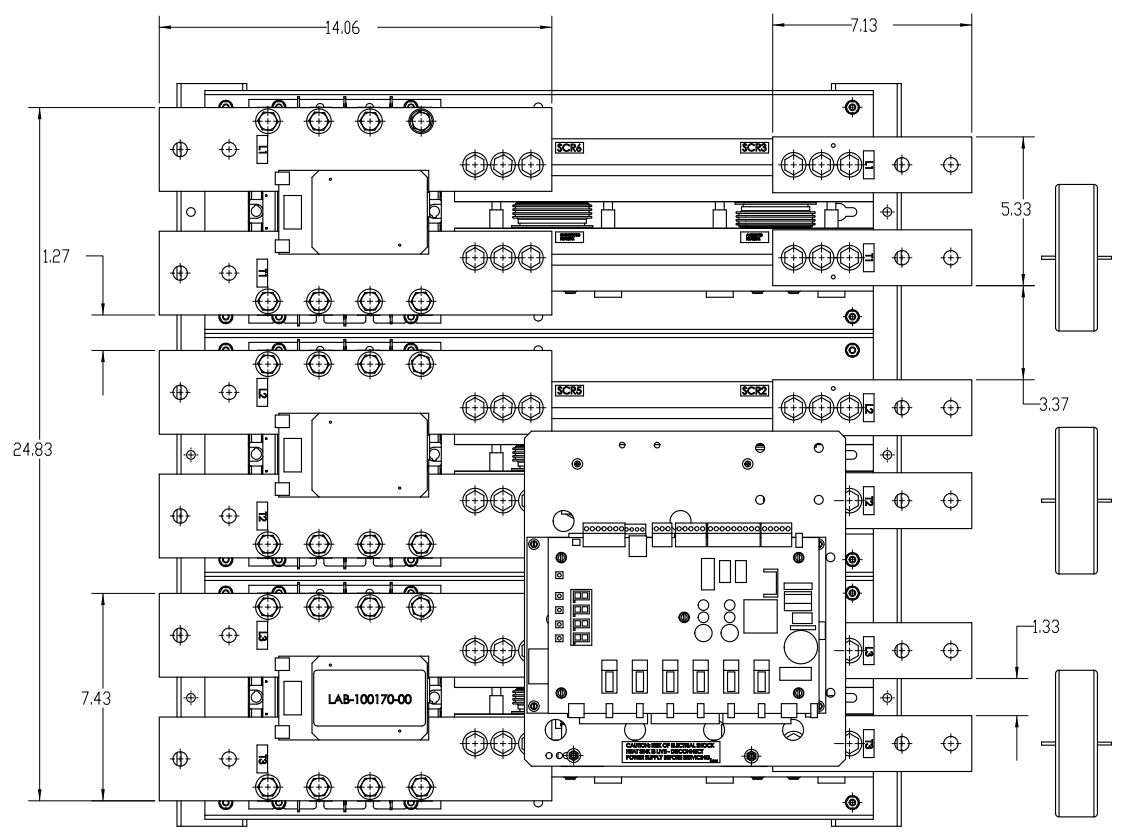
FULL ASSEMBLY

- INSTALLATION NOTE:
 TY-WRAP CT'S TO BUSS BAR AT END OF CHASSIS AS SHOWN. LEAVE ENOUGH WIRE TO BE ABLE TO MOUNT THE CT AT THE CONTACTOR END OF THE CHASSIS. DO NOT SECURE CT WIRES TO THE PANEL OR CHASSIS.
- NOTES:
 1. TIGHTEN ALL M6-100 BOLTS TO 6.77 Nm OR (5 FT LBS).
 2. ITEM 202 WILL BE REMOVED FROM THE CHASSIS WHEN THE STARTER IS MOUNTED DIRECTLY TO A SUBPANEL OF A ENCLOSURE. HARDWARE WILL BE DISCARDED.
 3. ITEMS 203 THRU 210 ARE NOT SHOWN.

EOD: E4124 APPD: JAF 3/5/2013 CHGD: JBP 3/6/2013 DESCRIPTION: UPDATE DWG TO AGREE WITH PWS SECTION - REV: 3 3/5/2013 JAF	EOD: E3782 APPD: JAF 8/20/2013 CHGD: JBP 8/20/2013 DESCRIPTION: CHG TITLE TO ADD RB3 IN THE DESCRIPTION REV: 2 8/20/2013 JBP	THIRD ANGLE PROJECTION	UNLESS OTHERWISE SPECIFIED ALL DIMENSION IN INCHES INTERPRET DRAWING PER ASME Y14.5M-1994	SIGNATURES DRWN. RBM CHKD. MSN ENG. MSN MFG.	DATE 6/7/07 6/7/07	TITLE: RB2 / RB3 838AMP CHASSIS STD FAULT 42KA MAX 838A 0D/1299A ID NORMAL 964A 0D/1494A ID e 115% 600V MAX	BENSHAW 605 ALPA DRIVE PITTSBURGH, PA 15206 PHONE: (412) 942-2800 FAX: (412) 942-2800 WWW: WWW.BENSHAW.COM	SIZE D	DWG NO. CH-440152-00	REV 3
		TOLERANCES: X ± 1/8 XX ± .03 XXX ± .015	MATERIAL: FINISH	SCALE: 5/16:1	SHEET: 1 OF 2					
		THIS DRAWING AND ALL INFORMATION CONTAINED HEREIN IS THE PROPERTY OF BENSHAW INC. AND IS NOT TO BE REPRODUCED OR TRANSMITTED IN ANY FORM OR BY ANY MEANS, ELECTRONIC OR MECHANICAL, WITHOUT THE EXPRESS WRITTEN CONSENT OF BENSHAW INC. CONVENIENCE OF THE USER AND SHALL BE RETURNED UPON REQUEST.								
		DO NOT SCALE DWG								

CH-440152-00

A
B
C
D
E
F
G
H
I
J
K
L
M
N



DO NOT SCALE DWG	THIRD ANGLE PROJECTION	UNLESS OTHERWISE SPECIFIED ALL DIMENSION IN INCHES INTERPRET DRAWING PER ASME Y14.5M-1994 TOLERANCES: X ± 1/8 ANGLES ± 1° XX ± .03 XXX ± .015 MATERIAL: FINISH:	SIGNATURES	DATE	TITLE: RB2 / RB3 838AMP CHASSIS STD FAULT 42KA MAX 838A DD/1299A ID NORMAL 9664A DD/1494A ID e 115% 600V MAX	BENSHAW <small>625 ALPHEA DRIVE PITTSBURGH, PA 15201 PHONE (412) 942-8000 300 BERRY ST. E. LEHART, OHIO 44046 HW 302</small>
	THIS DRAWING AND ALL INFORMATION CONTAINS HEREIN IS THE PROPERTY OF BENSHAW INC. AND DIVULGED TO UNAUTHORIZED PERSONS WITHOUT THE EXPRESS WRITTEN CONSENT OF BENSHAW INC. CONVENIENCE OF THE USER AND SHALL BE RETURNED UPON REQUEST.		DRWN. BER	11/28/11		
	CHKD. BER		11/28/11			
	ENG. JAF		11/28/11			
MFG.			SIZE D	DWG NO. CH-440152-00	REV 3	
SCALE: 5/16:1		SHEET: 2 OF 2				

90-661004-HJS
ON DIM

INCOMING POWER

- STANDARD LEGEND**
- WIRE NODE SYMBOL MAY HAVE TERMINAL BLOCK
 - BENSCHAW SUPPLIED TERMINAL BLOCK
 - TERMINAL STRIP
 - POWER CONNECTION
 - PC BOARD TERMINALS
 - TWISTED PAIR
 - TWISTED SHIELDED PAIR
 - SHIELDED WIRE
 - FIELD WIRING

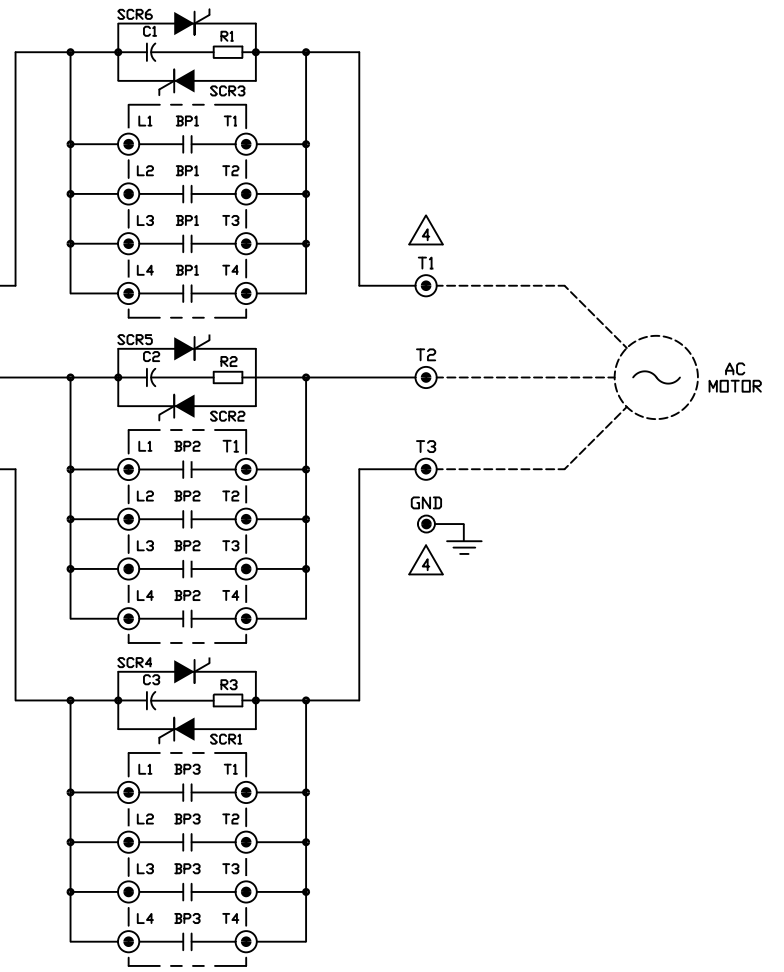
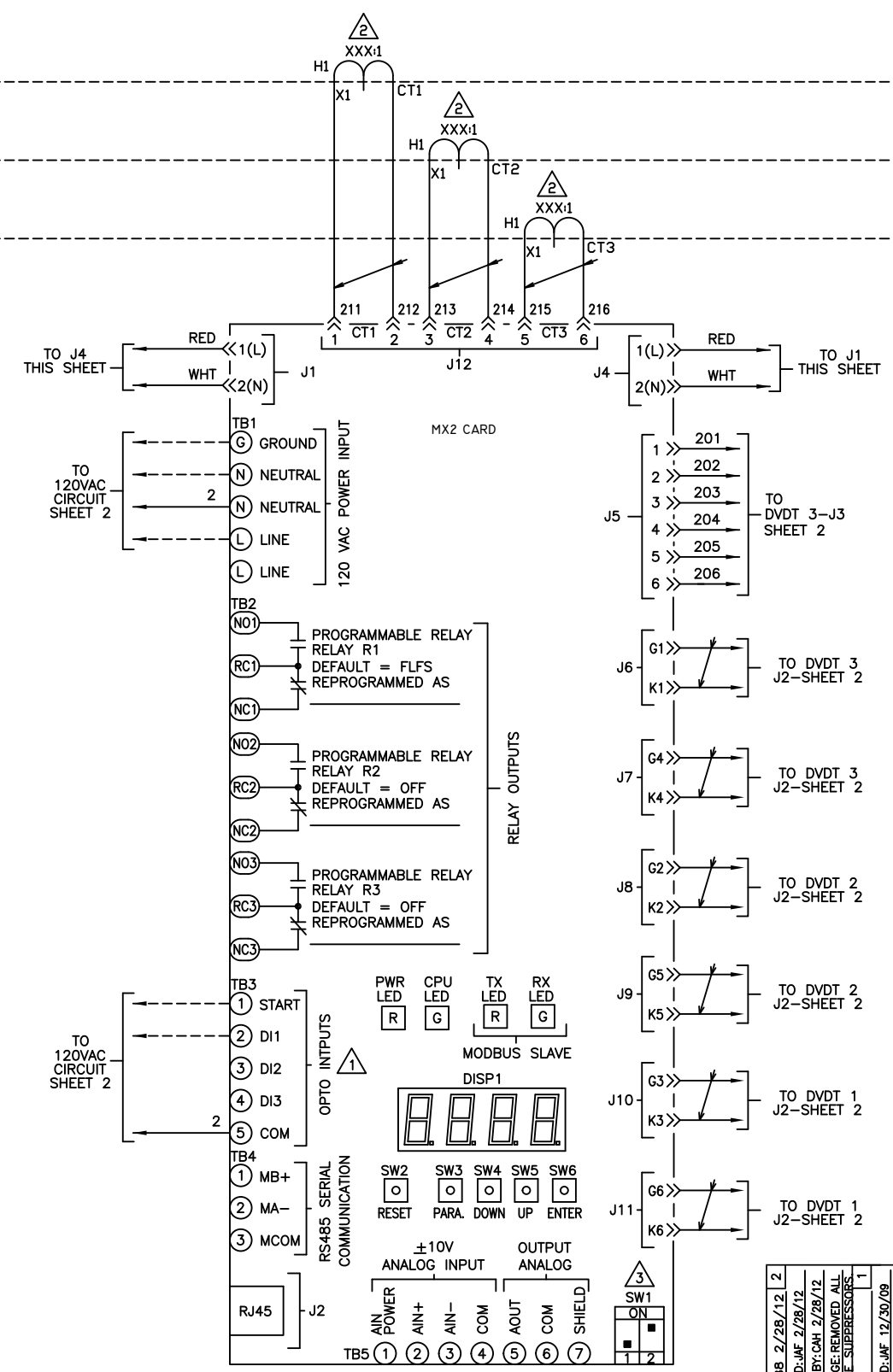


CHART 1

TIGHTENING TORQUE SPECIFICATIONS FOR SOCKET HEAD SCREWS

SOCKET SIZE ACROSS FLATS (INCHES)	TORQUE POUNDS-INCHES
1/4	200
5/16	275
3/8	375
1/2	500

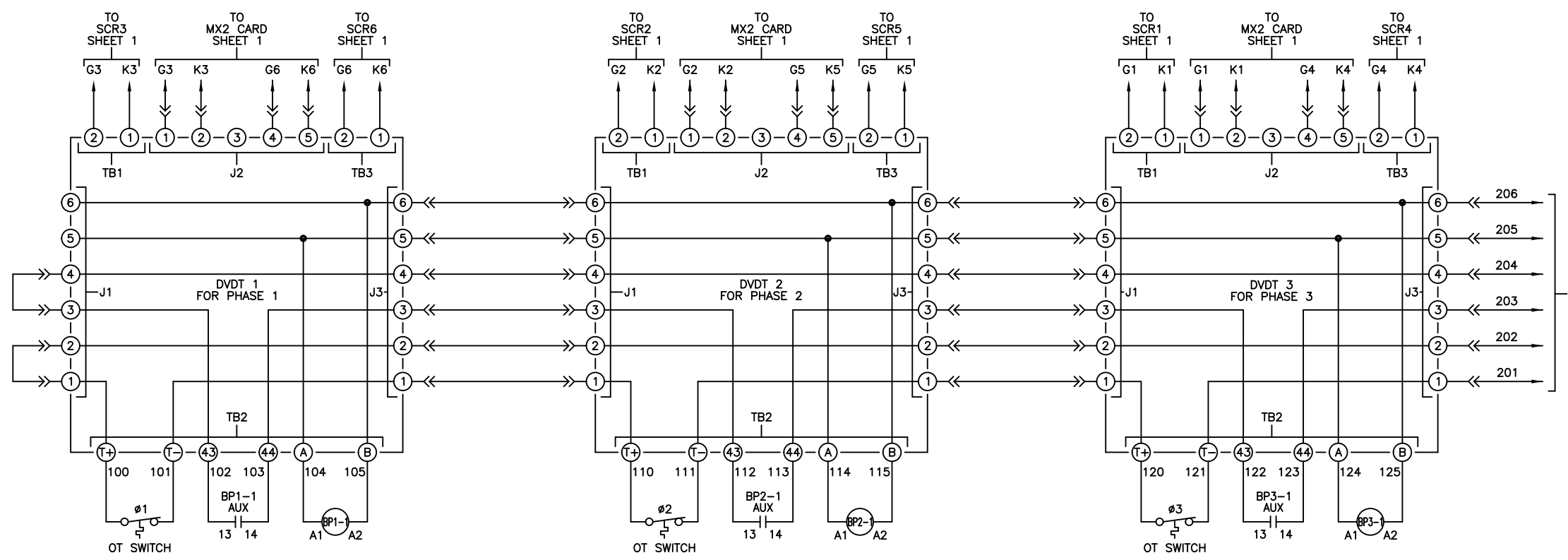
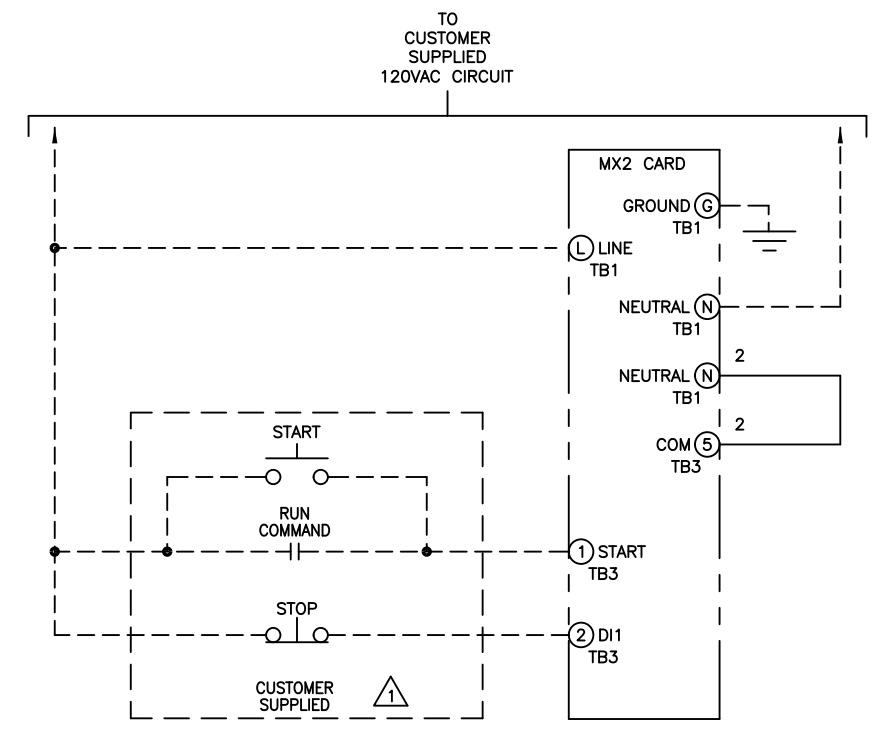
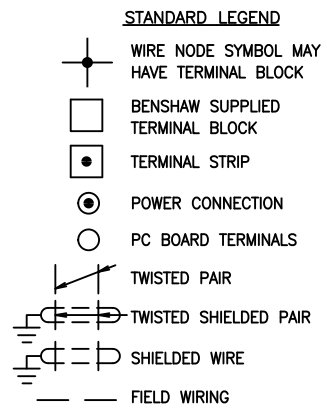
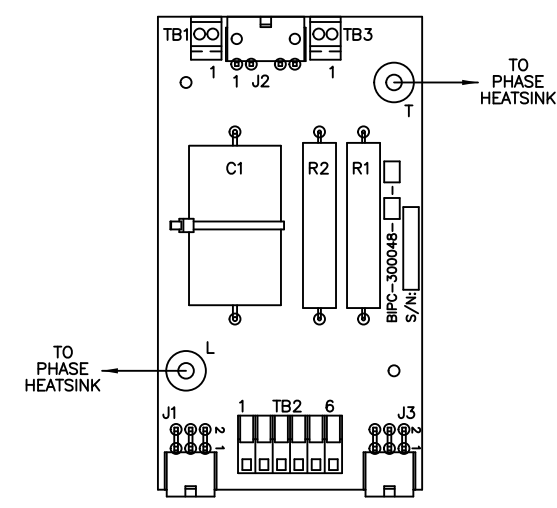
- NOTES:**
- ① SELECT EITHER THREE OR TWO WIRE CONTROL.
 - ② FOR 721-838A UNITS, PROGRAM (P78), FUN (03), CT RATIO = 57601
 - ③ SW1-1: (ANALOG INPUT) UP = CURRENT, DOWN = VOLTAGE
SW1-2: (ANALOG OUTPUT) UP = VOLTAGE, DOWN = CURRENT
 - ④ TIGHTEN POWER AND GROUND LUG FIELD WIRING CONNECTIONS TO CHART 1 SPECIFICATIONS. IF BREAKER IS SUPPLIED ON LINE SIDE OF STACK USE TORQUE VALUES ON BREAKER.

E3488 2/28/12 2	APPRO: JAF 2/28/12	CHG BY: CAH 2/28/12	CHANGE: REMOVED ALL SURGE SUPPRESSORS	APPRO: JAF 12/30/09	CHG BY: BDA 12/30/09	CHANGE: CHANGED BYPASS TO 4 POLE	THIRD ANGLE PROJECTION	UNLESS OTHERWISE SPECIFIED ALL DIMENSIONS IN INCHES INTERPRET DRAWING PER ASME Y14.5M-1994 TOLERANCES: .XX ± .03 .XXX ± .015 ANGLES ± 1°	TITLE: MASTER POWER SCHEMATIC FOR: 721-838A CHASSIS	SIGNATURES: JMD 1/2/2008 ENG: MSN 1/2/2008 MFR: MSN 1/2/2008 SIZE: D DWG NO. SCH-700139-05	DATE: 1/2/2008	BENSCHAW 815 ALPHA DRIVE PITTSBURGH, PA 15238 550 BRIGHT STREET LISTONEL, ONTARIO M4W 3W3	REV 2
-----------------	--------------------	---------------------	---------------------------------------	---------------------	----------------------	----------------------------------	------------------------	--	---	--	----------------	---	-------

SCALE: 1:1 SHEET 1 OF 2

1 2 3 4 5 6 7 8 9 10 11 12 13 14 15 16 17 18 19 20 21 22 23 24 25 26 27 28

90-661004-HJS



REVISIONS DO NOT SCALE DWG	THIRD ANGLE PROJECTION	UNLESS OTHERWISE SPECIFIED ALL DIMENSIONS IN INCHES INTERPRET DRAWING PER ASME Y14.5M-1994 TOLERANCES: .XX ± .03 .XXX ± .015 ANGLES ± 1° MATERIAL: FINISH:	TITLE: MASTER CONTROL SCHEMATIC RB2, W/MX2 CONTROL FOR: 721-838A CHASSIS	SIGNATURES: JMD DATE: 1/2/2008	815 ALPHA DRIVE PITTSBURGH, PA 15238 550 BRIGHT STREET LISTONEL, ONTARIO M4W 3W3		
	THIS DRAWING AND ALL INFORMATION CONTAINED HEREIN, IS THE PROPERTY OF BENSRAW INC., AND MAY NOT BE REPRODUCED, OR DIVULGED TO UNAUTHORIZED PERSONS WITHOUT THE EXPRESS WRITTEN CONSENT OF BENSRAW INC. IT IS PROVIDED SOLELY FOR THE CONVENIENCE OF THE USER AND SHALL BE RETURNED UPON REQUEST.			ENG: MSN DATE: 1/2/2008		DWG NO.	REV 2
	SCALE: 1:1			SHEET 2 OF 2			
	SCH-700139-05						