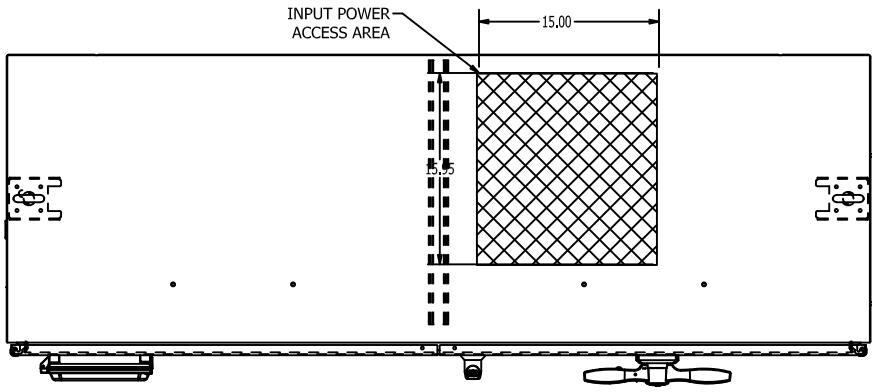


ON DWG



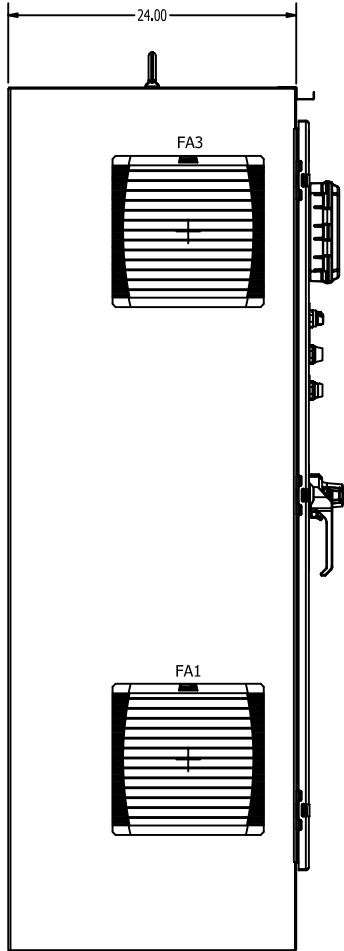
TOP VIEW

LABEL LEGEND

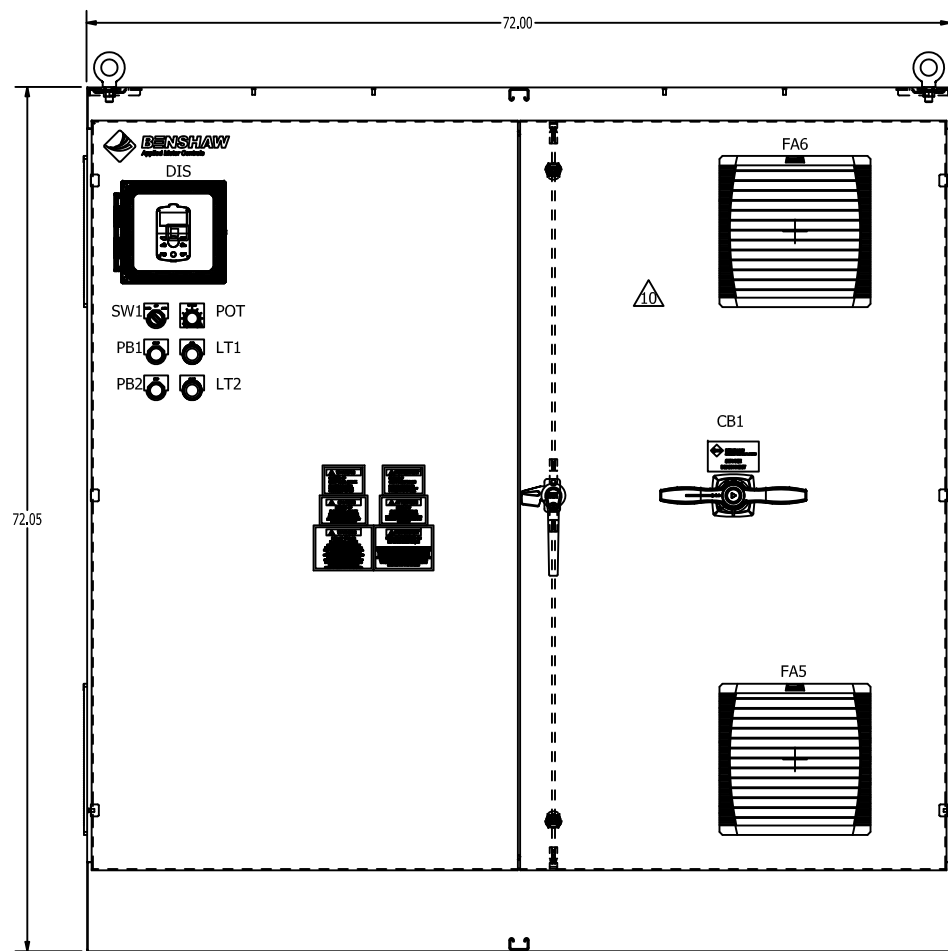
- CB1: CIRCUIT BREAKER
- DIS: VFD LCD DISPLAY/KEYPAD
- GND: GROUND LUGS
- VFD: VARIABLE FREQUENCY DRIVE
- TB1: TERMINAL BLOCKS
- R0: CONTROL RELAY
- T1: CONTROL POWER TRANSFORMER
- FU4,5: PRIMARY FUSES(T1)
- FU6,7: SECONDARY FUSES (T1)
- HTR1: ENCLOSURE SPACE HEATER
- TS1: HEATER THERMOSTAT
- TS2: FAN THERMOSTAT
- FA1,2,5: AIR INTAKE FANS
- FA3,4,6: AIR EXHAUST FANS
- SW1: HAND-OFF-AUTO SELECTOR SWITCH
- POT: SPEED POTENTIOMETER
- PB1: START PUSHBUTTON
- PB2: STOP PUSHBUTTON
- LT1: PILOT LIGHT RUN RED
- LT2: PILOT LIGHT FAULT AMBER

NOTES:

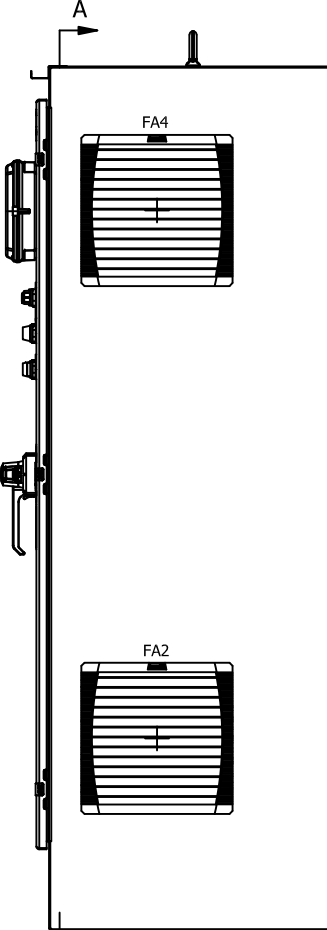
1. MINIMUM WIRE BENDING SPACE SHALL BE 14.00" FROM TOP OF CIRCUIT BREAKER POWER CONNECTION TO TOP OF ENCLOSURE.
 2. ENSURE THAT ALL RIBBON CABLES ARE ROUTED AWAY FROM POWER CONDUCTORS.
 3. MINIMUM WIRE BENDING SPACE SHALL BE 14.00" FROM OUTPUT VFD POWER CONNECTION TO TOP OR BOTTM OF ENCLOSURE.
 4. ENCLOSURE LAYOUT IS DESIGNED FOR CABLE ENTRY/EXIT TO BE TOP/BOTTOM.
 5. ENCLOSURE IS ANSI-61 GRAY POWDER COATED INSIDE AND OUT.
 6. ENCLOSURE ENVIROMENTAL RATING IS UL TYPE 3R.
 7. UNIT SCCR IS 65KAIC.
 8. ESTIMATED WEIGHT: 1450LBS.
 9. ALLOW A MINIMUM OF 6 INCHES OF SPACE ON BOTH SIDES OF THE ENCLOSURE FOR PROPER VENTILATION.
- ⚠️ MOTOR CONTROLLER IS SUITABLE FOR USE AS SERVICE EQUIPMENT. IF MOTOR CONTROLLER IS GOING TO BE USED AS SERVICE EQUIPMENT, INSTALL "SERVICE DISCONNECT" LEGEND AS SHOWN. "SERVICE DISCONNECT" IS SHIPPED LOOSE WITH MOTOR CONTROLLER.



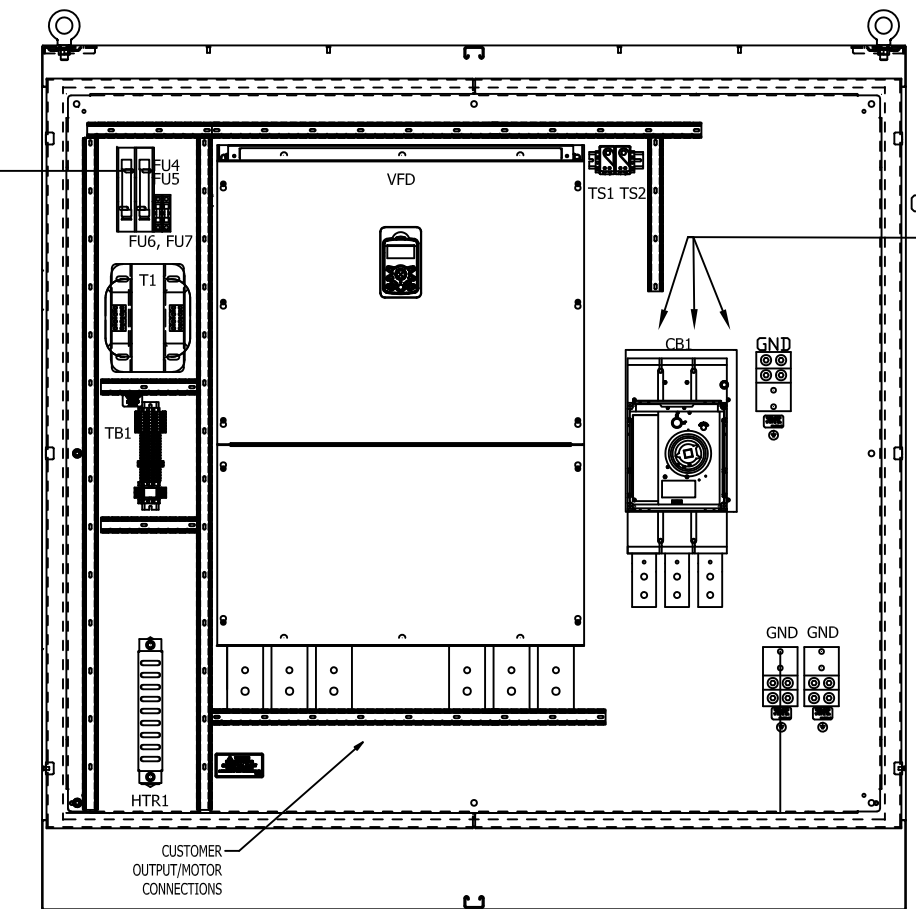
LEFT SIDE VIEW



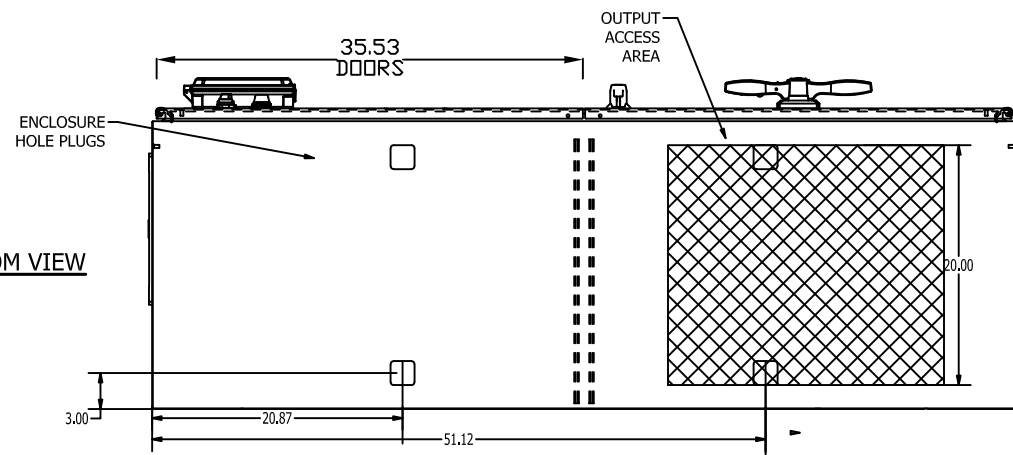
FRONT VIEW



RIGHT SIDE VIEW



PANEL VIEW SECTION A-A



BOTTOM VIEW

WASH SYSTEM 2" SQUARE DRAIN HOLES IN THE BOTTOM WITH UL APPROVED HOLE SEALS PROVIDED

NO.	DATE	DESCRIPTION
1	08/29/23	APPRD: BDA 08/29/23
2	08/29/23	CHG: BY: KSP 08/29/23
3		CHANGE: ADJUST FAN ON DOOR LOCATION

THIRD ANGLE PROJECTION

THIS DRAWING AND ALL INFORMATION CONTAINED HEREIN, IS THE PROPERTY OF BENSCHAW INC., AND MAY NOT BE REPRODUCED, OR DULGED TO UNAUTHORIZED PERSONS WITHOUT THE EXPRESS WRITTEN CONSENT OF BENSCHAW INC. IT IS PROVIDED SOLELY FOR THE CONVENIENCE OF THE USER AND SHALL BE RETURNED UPON REQUEST.

UNLESS OTHERWISE SPECIFIED ALL DIMENSIONS IN INCHES INTERPRET DRAWING PER ASME Y14.5M-1994

TOLERANCES: .XX ± .03
.XXX ± .015
ANGLES ± 1°

TITLE:
ENCLOSURE LAYOUT
H2X VFD
HEAVY DUTY
600HP 460VAC 60HZ
STANDARD DUTY
800HP 460VAC 60HZ

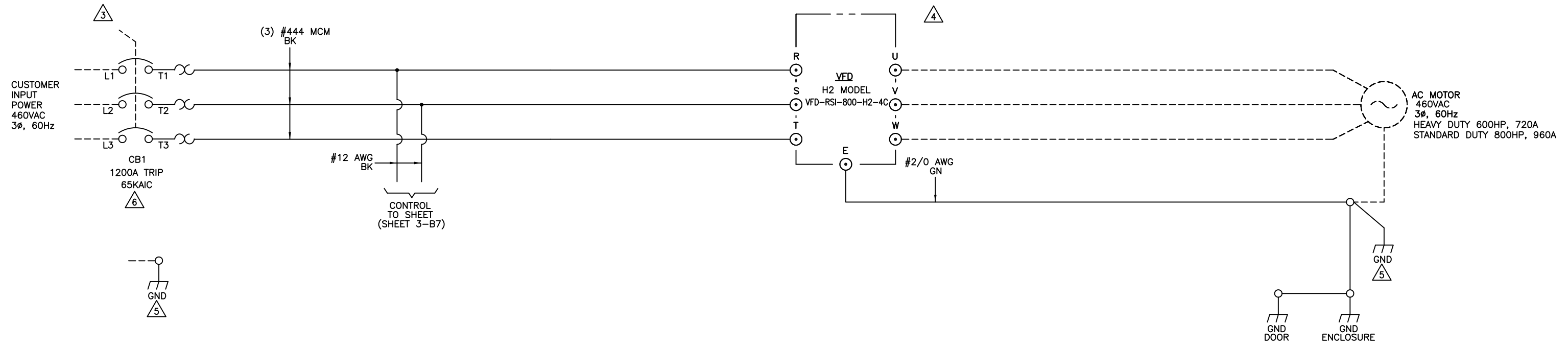
SIGNATURES	DATE
DRWN: KSP	07/24/23
CHKD: BDA	07/24/23
ENG: KSP	07/24/23
MFG:	



615 ALPHA DRIVE
PITTSBURGH, PA. 15238
550 BRIGHT STREET
LISTONEL, ONTARIO
N4W 3W3

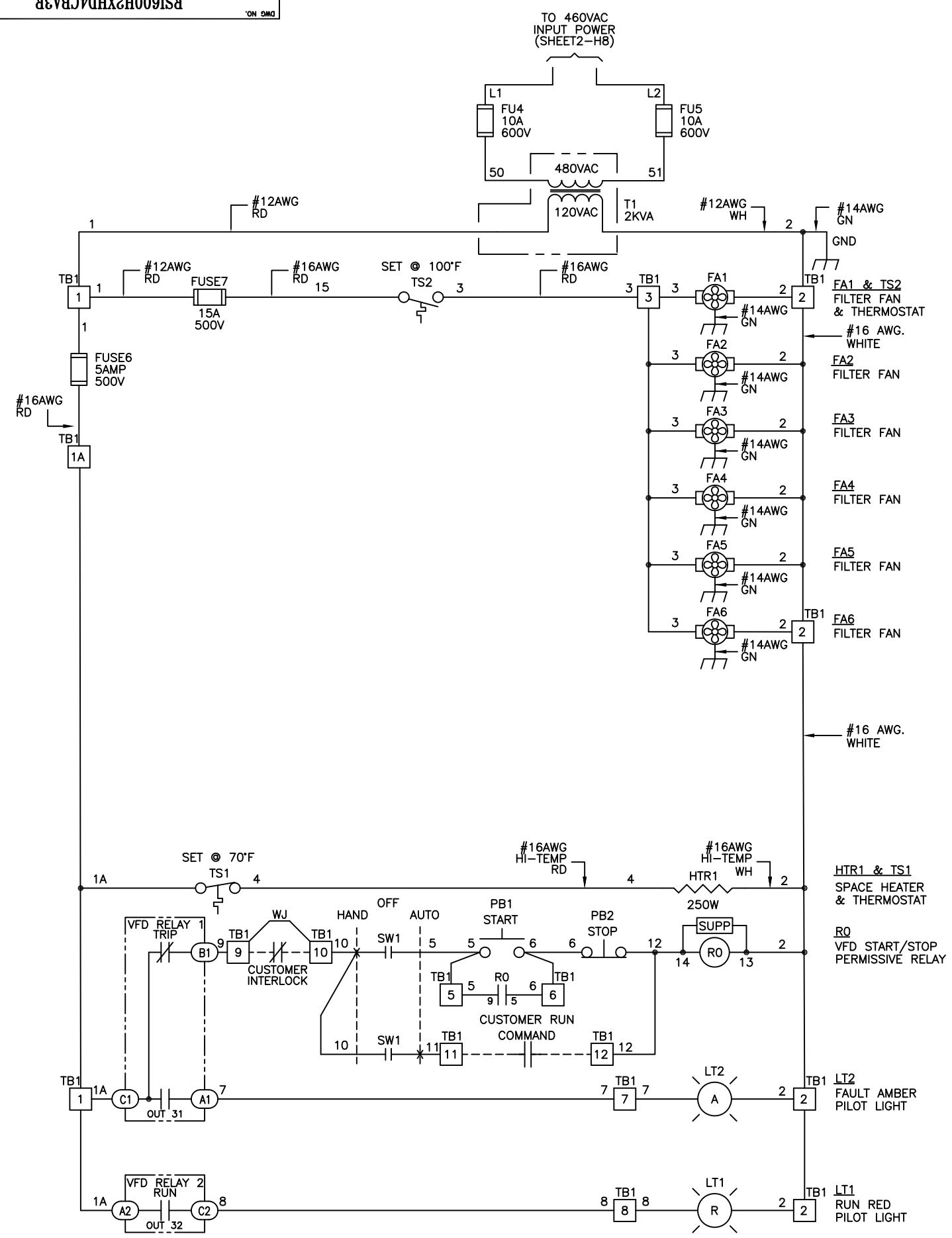
NOTES:

1. SIZE POWER WIRE PER NATIONAL ELECTRICAL CODE
2. CUSTOMER CONNECTIONS SHALL USE COPPER WIRE RATED 600V, 75°C
3. WIRE SIZE RANGE: (4) 3/0-350KCMIL TIGHTENING TORQUE: 398.3LB-IN (45Nm)
4. WIRE RANGE: 2" WIDE BUS TAB, NEMA 2-HOLE, 1/2" STUD TIGHTENING TORQUE: 500LB-IN(56.5NM)
5. WIRE SIZE RANGE: (4) 1/0-750KCMIL TIGHTENING TORQUE: 375LB-IN (42Nm)
6. SET GROUND FAULT SETTING $I_g = 0.5$



REVISIONS DO NOT SCALE DWG	THIRD ANGLE PROJECTION	UNLESS OTHERWISE SPECIFIED ALL DIMENSIONS IN INCHES INTERPRET DRAWING PER ASME Y14.5M-1994 TOLERANCES: .XX ± .03 .XXX ± .015 ANGLES ± 1°	TITLE: POWER SCHEMATIC H2X VFD HEAVY DUTY 600HP 460VAC 60HZ STANDARD DUTY 800HP 460VAC 60HZ	SIGNATURES DRWN. KSP 07/17/23 CHKD. BDA 07/17/23 ENG. KSP 07/17/23 MFG.	DATE 07/17/23	615 ALPHA DRIVE PITTSBURGH, PA. 15238 550 BRIGHT STREET LISTONEL ONTARIO N4W 3W3
	THIS DRAWING AND ALL INFORMATION CONTAINED HEREIN, IS THE PROPERTY OF BENSHAW INC., AND MAY NOT BE REPRODUCED, OR DULGED TO UNAUTHORIZED PERSONS WITHOUT THE EXPRESS WRITTEN CONSENT OF BENSHAW INC. IT IS PROVIDED SOLELY FOR THE CONVENIENCE OF THE USER AND SHALL BE RETURNED UPON REQUEST.	MATERIAL: FINISH:		SIZE DWG NO. D RSI600H2XHD4CBA3R	REV 0	
	SCALE: NTS			SHEET 2 OF 4		
	DO NOT SCALE DWG					

RSI600H2XH4CBA3R

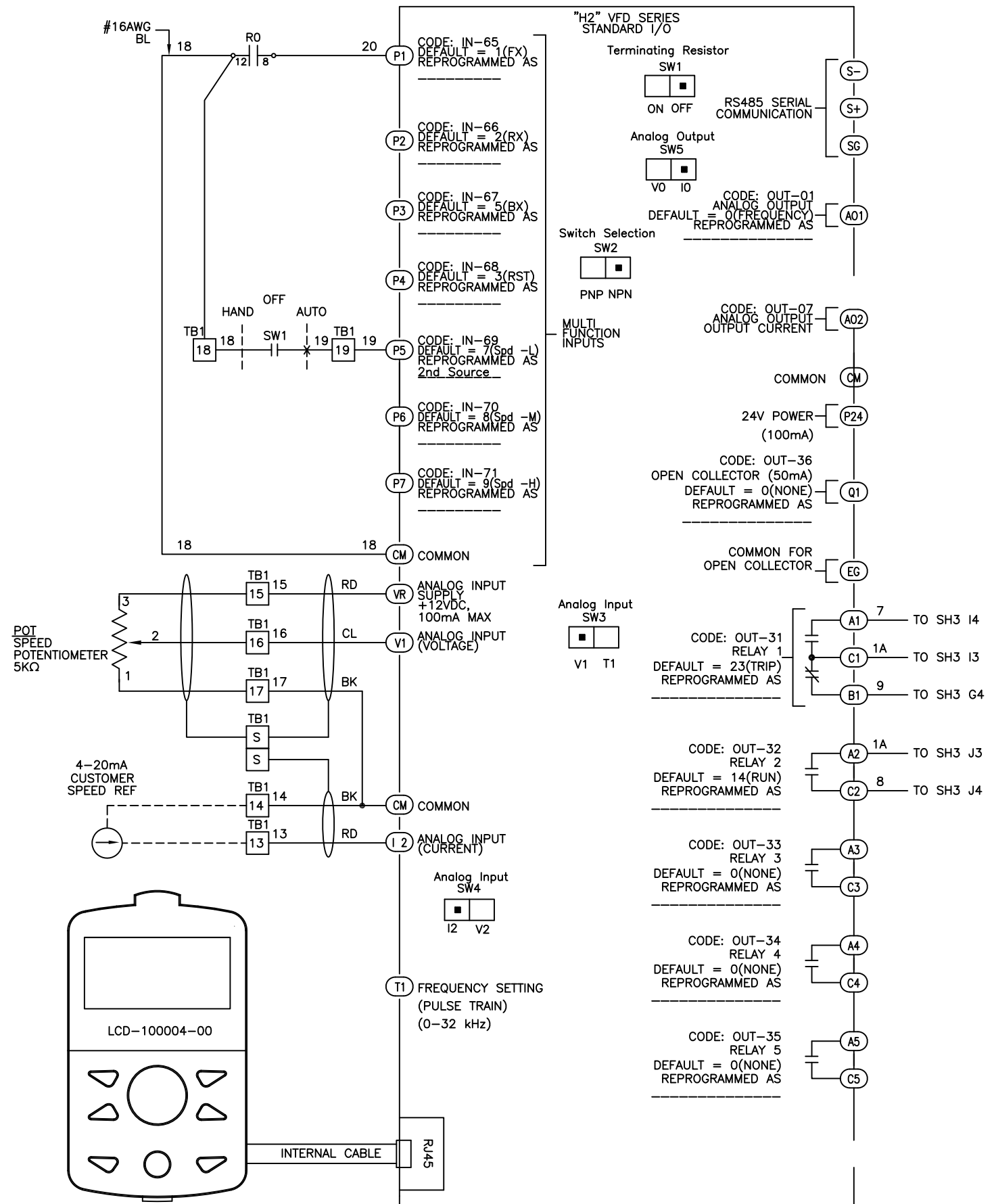


PRODUCTION

REVISIONS DO NOT SCALE DWG	THIRD ANGLE PROJECTION	UNLESS OTHERWISE SPECIFIED ALL DIMENSIONS IN INCHES INTERPRET DRAWING PER ASME Y14.5M-1994 TOLERANCES: .XX ± .03 .XXX ± .015 ANGLES ± 1°	TITLE: CONTROL SCHEMATIC H2X VFD HEAVY DUTY 600HP 460VAC 60HZ STANDARD DUTY 800HP 460VAC 60HZ	SIGNATURES DATE DRWN. KSP 07/17/23 CHKD. BDA 07/17/23 ENG. KSP 07/17/23 MFG.	615 ALPHA DRIVE PITTSBURGH, PA. 15238 BENSHAW 550 BRIGHT STREET LISTONEL ONTARIO N4W 3W3
	THIS DRAWING AND ALL INFORMATION CONTAINED HEREIN, IS THE PROPERTY OF BENSHAW INC., AND MAY NOT BE REPRODUCED, OR DULGED TO UNAUTHORIZED PERSONS WITHOUT THE EXPRESS WRITTEN CONSENT OF BENSHAW INC. IT IS PROVIDED SOLELY FOR THE CONVENIENCE OF THE USER AND SHALL BE RETURNED UPON REQUEST.	MATERIAL: FINISH:	SCALE: NTS	REV 0	
	SIZE DWG NO. RSI600H2XH4CBA3R			SHEET 3 OF 4	
	DO NOT SCALE DWG			SHEET 3 OF 4	

SPECIAL PROGRAMMING

H2 MODEL VFD1, DRIVE SETTING		
CODE	SETTING	DESCRIPTION
DRV 06	1	Fx/Rx-1
DRV 07	2	V1
BAS 01	1	Fx/Rx-1
BAS 02	5	I2
IN 01	60	Freq at 100%
IN 53	4.0	I2 Minimum Input Current mA
IN 55	20.0	I2 Maximum Input Current mA
IN 56	100.0	I2 Output at Maximum Current
IN 69	17	2nd Source (P5 INPUT)
Cnfc 61	No	Run Quickstart



REVISIONS DO NOT SCALE DWG	THIRD ANGLE PROJECTION	UNLESS OTHERWISE SPECIFIED ALL DIMENSIONS IN INCHES INTERPRET DRAWING PER ASME Y14.5M-1994 TOLERANCES: .XX ± .03 .XXX ± .015 ANGLES ± 1°	TITLE: CONTROL SCHEMATIC H2X VFD HEAVY DUTY 600HP 460VAC 60HZ STANDARD DUTY 600HP 460VAC 60HZ	SIGNATURES DATE DRWN. KSP 07/17/23 CHKD. BDA 07/17/23 ENG. KSP 07/17/23 MFG.	BENSRAW 550 BRIGHT STREET LISTONEL, ONTARIO N4W 3W3 615 ALPHA DRIVE PITTSBURGH, PA. 15238	
	THIS DRAWING AND ALL INFORMATION CONTAINED HEREIN IS THE PROPERTY OF BENSRAW INC., AND MAY NOT BE REPRODUCED, OR DULGED TO UNAUTHORIZED PERSONS WITHOUT THE EXPRESS WRITTEN CONSENT OF BENSRAW INC. IT IS PROVIDED SOLELY FOR THE CONVENIENCE OF THE USER AND SHALL BE RETURNED UPON REQUEST.			SCALE: NTS		
	MATERIAL:			FINISH:		SIZE DWG NO. D RSI600H2XHD4CBA3R
	FINISH:			SHEET 4 OF 4		