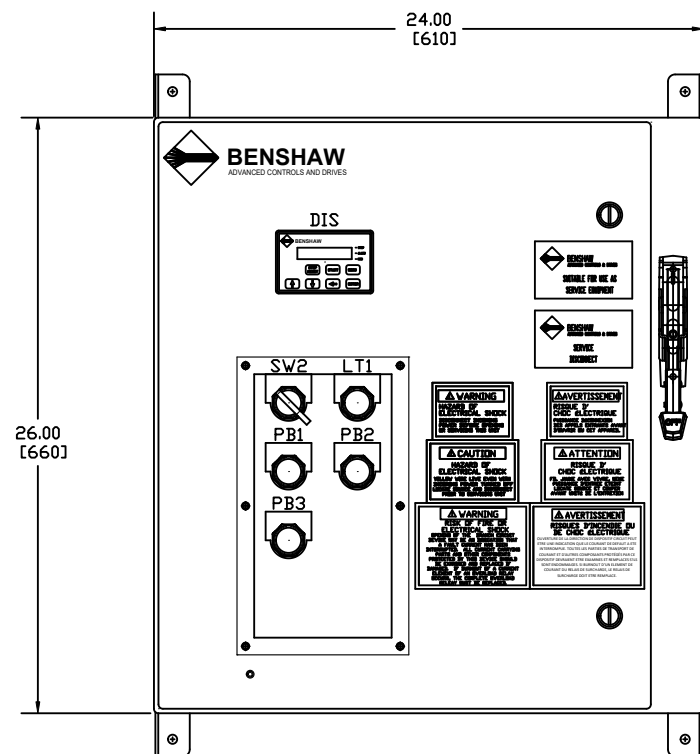
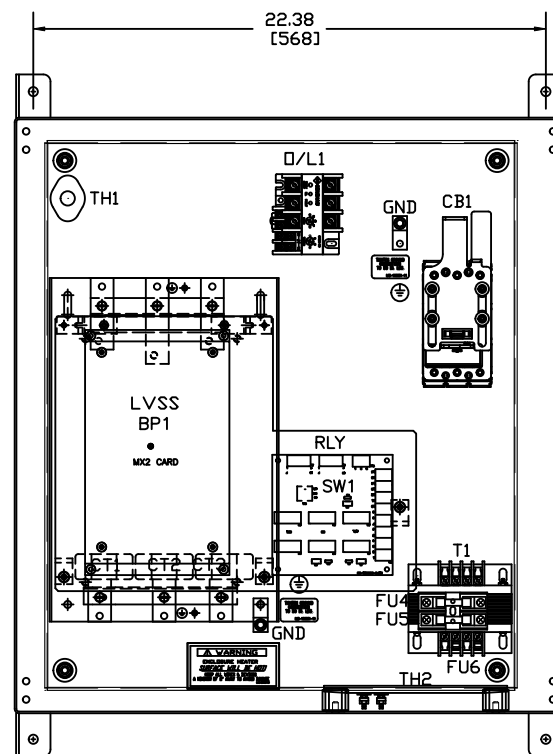


**NOTES:**

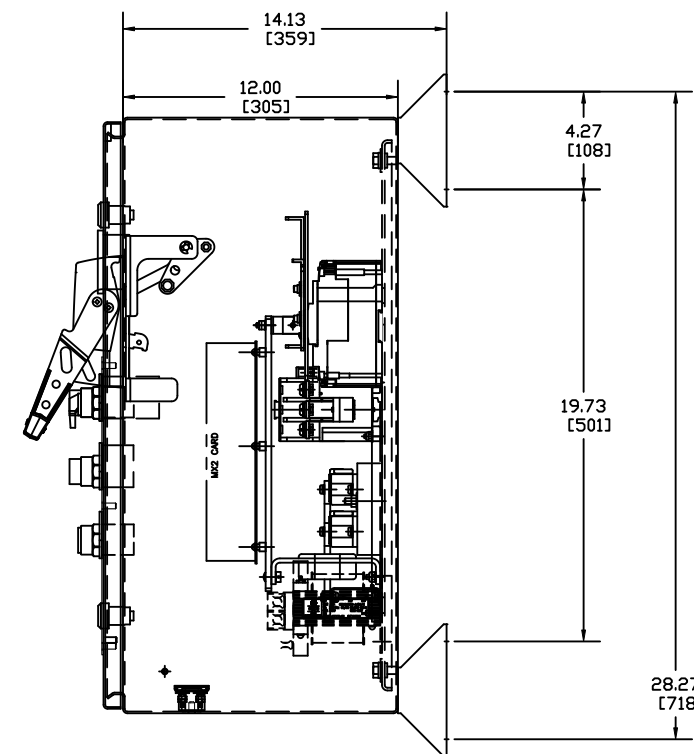
- 1 MINIMUM WIRE BENDING SPACE SHALL BE 3.00" FROM TOP OF CIRCUIT BREAKER POWER CONNECTION TO TOP OF ENCLOSURE.
- 2 ENSURE THAT ALL RIBBON CABLES ARE ROUTED AWAY FROM POWER CONDUCTORS.
- 3 MINIMUM WIRE BENDING SPACE SHALL BE 3.00" FROM BOTTOM OF POWERSTACK POWER CONNECTION TO BOTTOM OF ENCLOSURE.
- 4 ENCLOSURE LAYOUT IS DESIGNED FOR CABLE ENTRY/EXIT TO BE TOP/BOTTOM.
- 5 REMOVE ANY HARDWARE ATTACHED TO SWITCH 1.



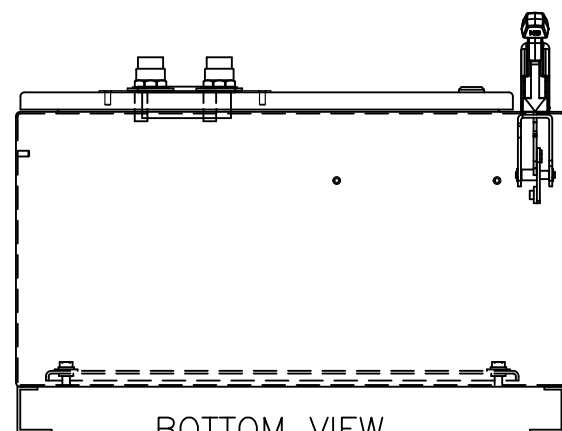
FRONT VIEW



PANEL VIEW



SIDE VIEW



BOTTOM VIEW

**LEGEND**

- CB1: CIRCUIT BREAKER
- GND: GROUND LUGS
- PS1: PIN STRIP 3 POINT SHUNT TRIP
- LVSS: RB2 POWER STACK
- CT1-3: CONTROL CARD CT'S
- CT4-6: OVERLOAD CT'S
- BP1: ATL/BYPASS CONTACTOR
- D/L1: OVERLOAD RELAY
- RLY: SS-ATL RELAY CARD
- SW2: LOCAL-OFF-REMOTE SEL. SWITCH
- T1: CONTROL POWER TRANSFORMER
- FU4-5: PRIMARY FUSING (T1)
- FU6: SECONDARY FUSE (T1)
- TH1: THERMOSTAT
- TH2: SPACE HEATER
- DIS: DOOR MOUNTED KEYPAD
- PB1: START PUSHBUTTON
- PB2: STOP PUSHBUTTON
- LT1: RUNNING PILOT LIGHT

15	APPRD: BDA 8/29/18
14	CHG BY: BDA 8/29/18
13	CHANGE: CHANGED TO 3VA BREAKER
12	E-4 105
11	APPRD: AES 2/25/13
10	CHG BY: BDA 2/25/13
9	CHANGE: CHANGED OVERLOAD RELAY TO 30 SECONDS
8	APPRD: AES 11/12/12
7	CHG BY: BDA 11/12/12
6	CHANGE: CHANGED BREAKER TO SENTROL E3796
5	APPRD: JAF 8/13/12
4	CHG BY: BDA 8/13/12
3	CHANGE: REVISED PER WAVE PROJECT. REV TO INITIAL RELEASE

THIRD ANGLE PROJECTION

UNLESS OTHERWISE SPECIFIED ALL DIMENSIONS IN INCHES INTERPRET DRAWING PER ASME Y14.5M-1994

TOLERANCES: .XX ± .03  
.XXX ± .015  
ANGLES ± 1°

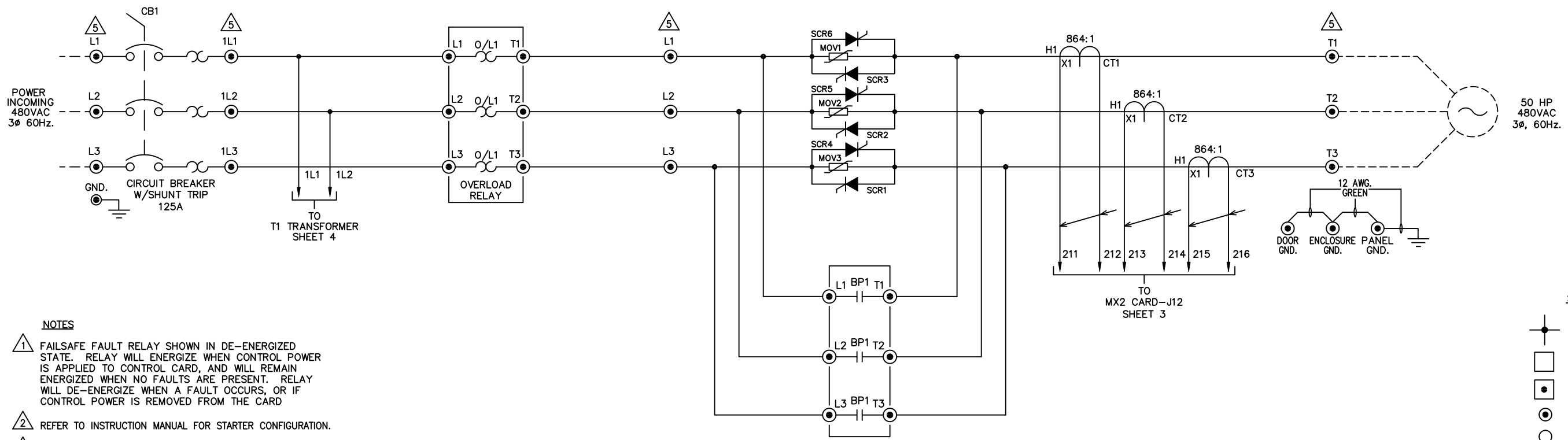
MATERIAL:  
FINISH:

**TITLE:**  
ENCLOSURE LAYOUT  
RX2E-050-480-3RKP  
50HP (65 AMPS) @ 480V  
(500% CURRENT FOR 30SECONDS, 125% CONTINUOUS DUTY RATED)

<table border="1"> <tr> <th>SIGNATURES</th> <th>DATE</th> </tr> <tr> <td>DRWN: BDA</td> <td>3/2/12</td> </tr> <tr> <td>CHKD: JAF</td> <td>3/2/12</td> </tr> <tr> <td>ENG: JAF</td> <td>3/2/12</td> </tr> <tr> <td>MFG:</td> <td></td> </tr> <tr> <td>SIZE: D</td> <td>DWG NO.</td> </tr> </table>	SIGNATURES	DATE	DRWN: BDA	3/2/12	CHKD: JAF	3/2/12	ENG: JAF	3/2/12	MFG:		SIZE: D	DWG NO.		<p>815 ALPHA DRIVE PITTSBURGH, PA. 15238</p> <p>550 BRIGHT STREET LITTONEL, ONTARIO M4W 3K3</p>
SIGNATURES	DATE													
DRWN: BDA	3/2/12													
CHKD: JAF	3/2/12													
ENG: JAF	3/2/12													
MFG:														
SIZE: D	DWG NO.													
<p><b>RX2E0504803RKP</b></p>		<p>REV 15</p>												
<p>SCALE: 1:4</p>		<p>SHEET 1 OF 4</p>												

RX2E0504803RKP ON DWG

A  
B  
C  
D  
E  
F  
G  
H  
I  
J  
K  
L  
M  
N



- NOTES**
1. FAILSAFE FAULT RELAY SHOWN IN DE-ENERGIZED STATE. RELAY WILL ENERGIZE WHEN CONTROL POWER IS APPLIED TO CONTROL CARD, AND WILL REMAIN ENERGIZED WHEN NO FAULTS ARE PRESENT. RELAY WILL DE-ENERGIZE WHEN A FAULT OCCURS, OR IF CONTROL POWER IS REMOVED FROM THE CARD
  2. REFER TO INSTRUCTION MANUAL FOR STARTER CONFIGURATION.
  3. CUSTOMER SHOULD MONITOR GENERAL FAULT CONTACTS OF RELAY (R3) FOR FAULT DETECTION, AND REMOVE 2 WIRE RUN COMMAND WHEN A FAULT IS DETECTED.
  4. TIGHTEN CARD WIRING CONNECTIONS TO 2.7-3.5 in. lbs. (0.3-0.4 N-m).
  5. TIGHTEN POWER LUG FIELD WIRING CONNECTIONS TO CHART 1. SPECIFICATIONS. IF BREAKER IS SUPPLIED ON LINE SIDE OF STACK USE TORQUE VALUES ON BREAKER.
  6. REMOVE JUMPER WHEN INTERLOCKS ARE INSTALLED.
  7. SELECT EITHER TWO OR THREE WIRE CONTROL.
  8. STARTER SHIPPED SETUP FOR CUSTOMER SUPPLIED REMOTE 2 WIRE CONTROL. IF NO CONTROL IS TO BE USED THEN JUMPERS SHOULD REMAIN AS SHOWN.
  9. IF CUSTOMER SUPPLIED REMOTE 3 WIRE CONTROL IS NEEDED MAKE CUSTOMER CONNECTIONS AS SHOWN.
  10. CHANGE P49 (DI2) TO "FR" (FAULT RESET)
  11. SW1-1: (ANALOG INPUT) UP = CURRENT, DOWN = VOLTAGE  
SW1-2: (ANALOG OUTPUT) UP = VOLTAGE, DOWN = CURRENT
  12. PROGRAM (P78), FUN (03), CT RATIO = 864:1

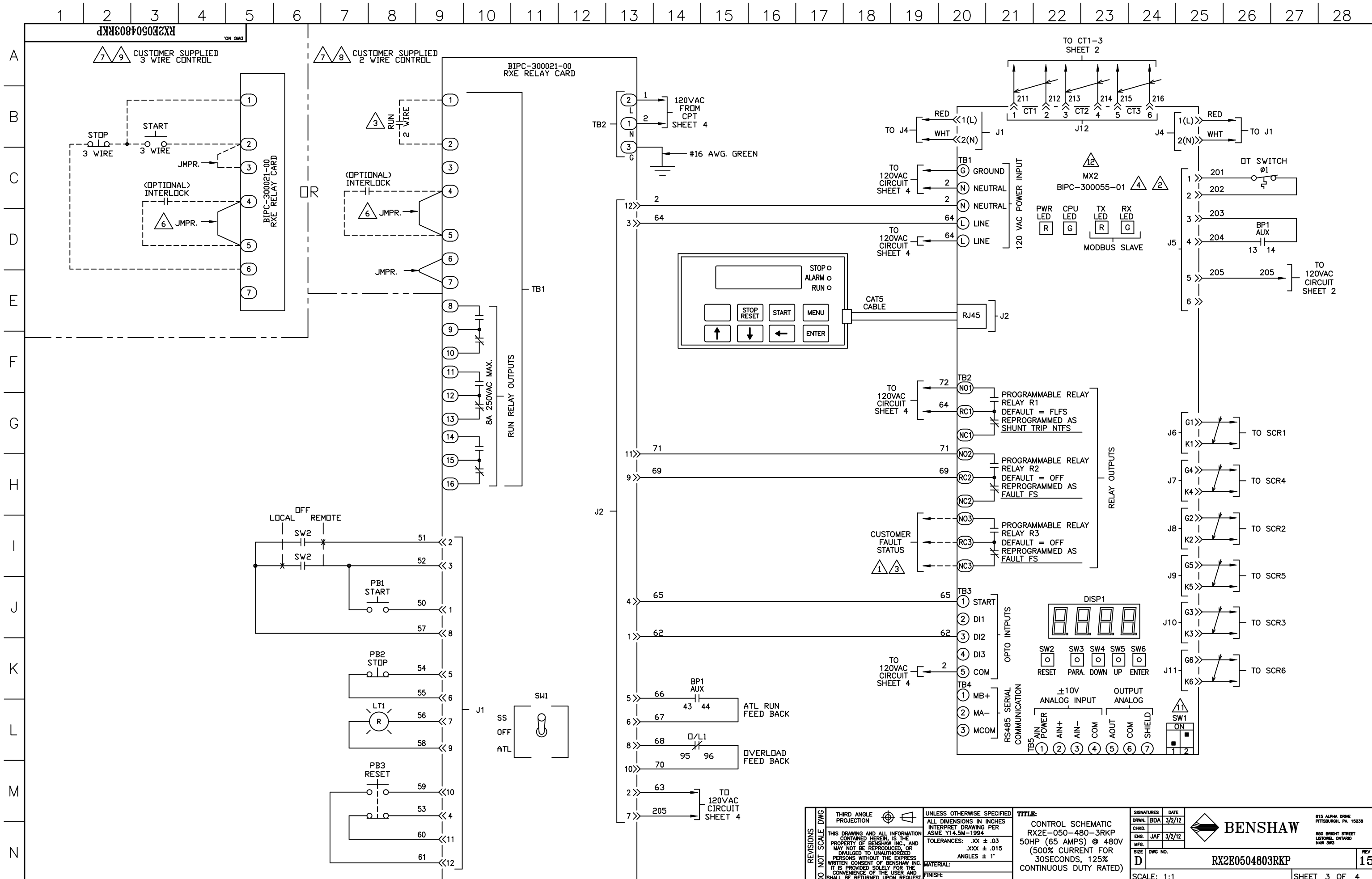
- STANDARD LEGEND**
- WIRE NODE SYMBOL MAY HAVE TERMINAL BLOCK
  - BENSCHAW SUPPLIED TERMINAL BLOCK
  - TERMINAL STRIP
  - POWER CONNECTION
  - PC BOARD TERMINALS
  - TWISTED PAIR
  - TWISTED SHIELDED PAIR
  - SHIELDED WIRE
  - FIELD WIRING

CHART 1  
TIGHTENING TORQUE SPECIFICATIONS FOR HEX HEAD SCREWS

BOLT SIZE	BOLTS - GRADE 5	
SAE	(IN. LB)	(FT. LB)
1/4	96-120	8-10
5/16	180-228	15-19
3/8	300-396	25-33
7/16	480-648	40-54
1/2	720-936	60-78

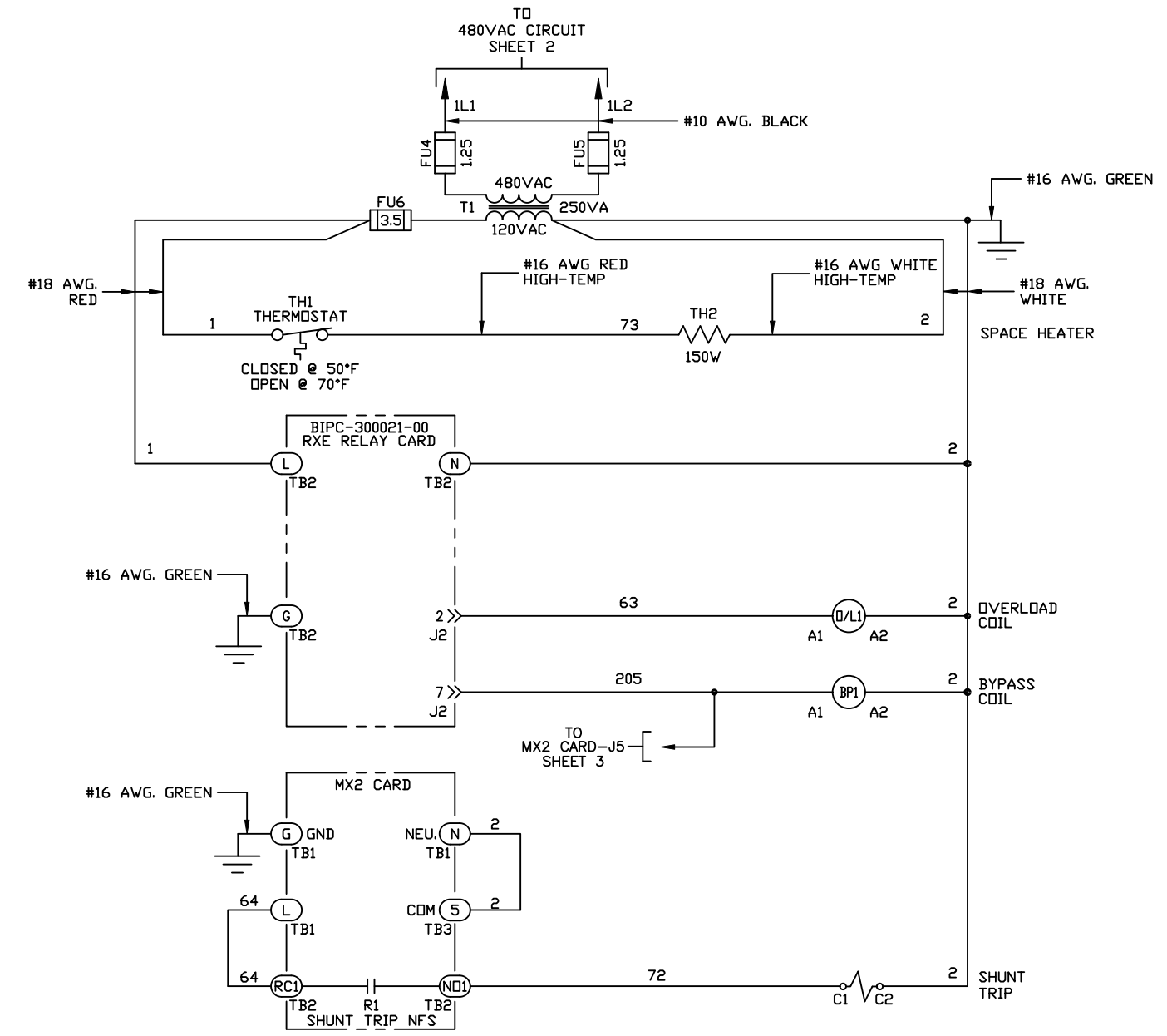
REVISIONS DO NOT SCALE DWG	THIRD ANGLE PROJECTION	UNLESS OTHERWISE SPECIFIED ALL DIMENSIONS IN INCHES INTERPRET DRAWING PER ASME Y14.5M-1994	<b>TITLE:</b> POWER SCHEMATIC RX2E-050-480-3RKP 50HP (65 AMPS) @ 480V (500% CURRENT FOR 30SECONDS, 125% CONTINUOUS DUTY RATED)	SIGNATURES DRWN: BDA 3/2/12 CHKD: ENG: JAF 3/2/12 MFG: SIZE: D DWG NO.	DATE 3/2/12	BENSCHAW 815 ALPHA DRIVE PITTSBURGH, PA. 15238 550 BRIGHT STREET LISTOWEL, ONTARIO M4W 3W3
	THIS DRAWING AND ALL INFORMATION CONTAINED HEREIN, IS THE PROPERTY OF BENSCHAW INC. AND MAY NOT BE REPRODUCED, OR DIVULGED TO UNAUTHORIZED PERSONS WITHOUT THE EXPRESS WRITTEN CONSENT OF BENSCHAW INC. IT IS PROVIDED SOLELY FOR THE CONVENIENCE OF THE USER AND SHALL BE RETURNED UPON REQUEST.	TOLERANCES: .XX ± .03 .XXX ± .015 ANGLES ± 1°		MATERIAL: FINISH:	REV 15	

SCALE: 1:1 SHEET 2 OF 4



<b>REVISIONS</b> DO NOT SCALE DWG	THIRD ANGLE PROJECTION	UNLESS OTHERWISE SPECIFIED ALL DIMENSIONS IN INCHES INTERPRET DRAWING PER ASME Y14.5M-1994	<b>TITLE:</b> CONTROL SCHEMATIC RX2E-050-480-3RKP 50HP (65 AMPS) @ 480V (500% CURRENT FOR 30SECONDS, 125% CONTINUOUS DUTY RATED)	SIGNATURES: BDA DATE: 3/2/12	815 ALPHA DRIVE PITTSBURGH, PA. 15238 550 BRIGHT STREET LISTOWEL, ONTARIO M4W 3W3	
	THIS DRAWING AND ALL INFORMATION CONTAINED HEREIN, IS THE PROPERTY OF BENSHAW INC. AND MAY NOT BE REPRODUCED, OR DIVULGED TO UNAUTHORIZED PERSONS WITHOUT THE EXPRESS WRITTEN CONSENT OF BENSHAW INC. IT IS PROVIDED SOLELY FOR THE CONVENIENCE OF THE USER AND SHALL BE RETURNED UPON REQUEST.	TOLERANCES: .XX ± .03 .XXX ± .015 ANGLES ± 1°	MATERIAL: FINISH:	SIZE: D DWG NO.: RX2E0504803RKP		REV: 15
	SCALE: 1:1			SHEET 3 OF 4		
	SHEET 3 OF 4					

A  
B  
C  
D  
E  
F  
G  
H  
I  
J  
K  
L  
M  
N



REVISIONS DO NOT SCALE DWG	THIRD ANGLE PROJECTION	UNLESS OTHERWISE SPECIFIED ALL DIMENSIONS IN INCHES INTERPRET DRAWING PER ASME Y14.5M-1994	<b>TITLE:</b> CONTROL SCHEMATIC RX2E-050-480-3RKP 50HP (65 AMPS) @ 480V (500% CURRENT FOR 30SECONDS, 125% CONTINUOUS DUTY RATED)	SIGNATURES DRWN: BDA CHKD: ENG: JAF MFG: DATE: 3/2/12	815 ALPHA DRIVE PITTSBURGH, PA. 15238 550 BRIGHT STREET LISTOWEL, ONTARIO M4W 3W3
	THIS DRAWING AND ALL INFORMATION CONTAINED HEREIN, IS THE PROPERTY OF BENSHAW INC. AND MAY NOT BE REPRODUCED, OR DIVULGED TO UNAUTHORIZED PERSONS WITHOUT THE EXPRESS WRITTEN CONSENT OF BENSHAW INC. IT IS PROVIDED SOLELY FOR THE CONVENIENCE OF THE USER AND SHALL BE RETURNED UPON REQUEST.	TOLERANCES: .XX ± .03 .XXX ± .015 ANGLES ± 1°	MATERIAL: FINISH:	SIZE: D DWG NO.: RX2E0504803RKP REV: 15	
	SCALE: 1:1			SHEET 4 OF 4	
	DO NOT SCALE DWG			SHEET 4 OF 4	