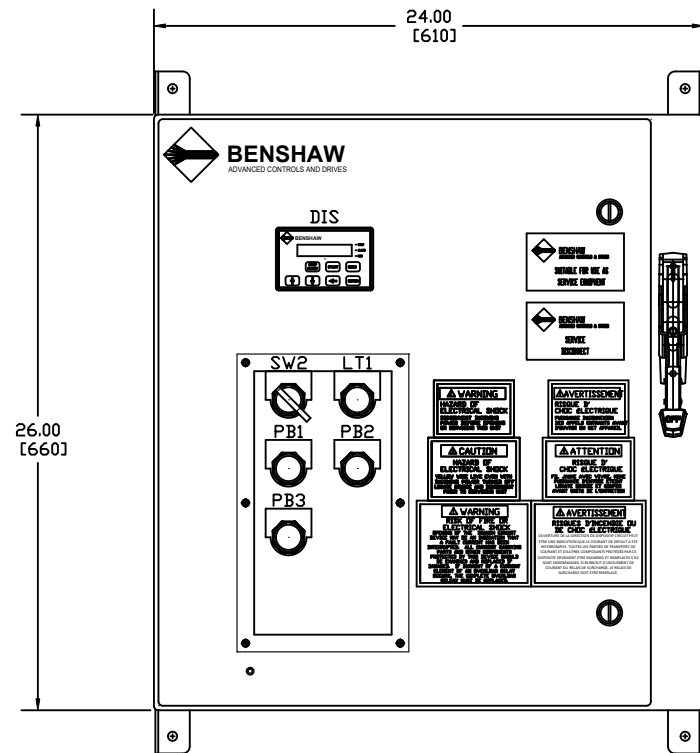
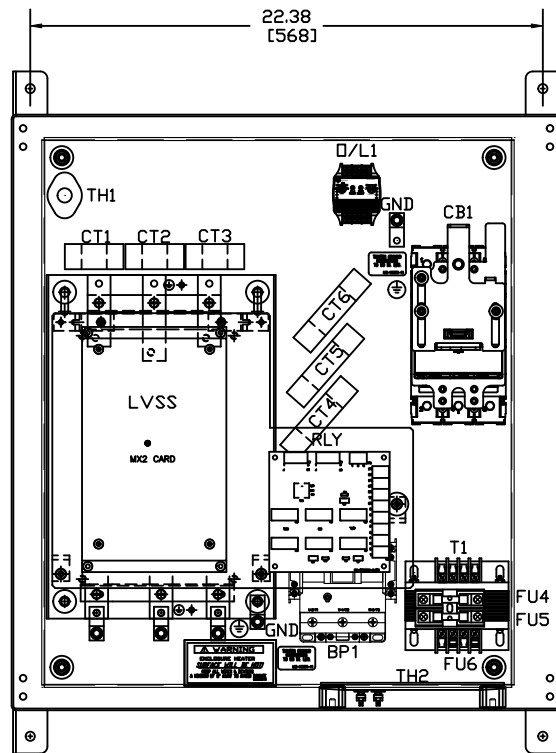


NOTES:

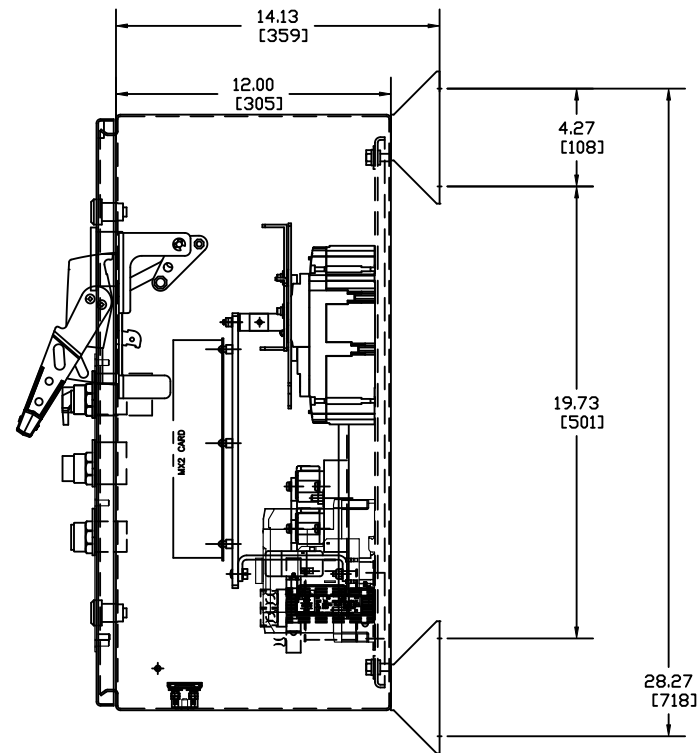
- 1 MINIMUM WIRE BENDING SPACE SHALL BE 3.00" FROM TOP OF CIRCUIT BREAKER POWER CONNECTION TO TOP OF ENCLOSURE.
- 2 ENSURE THAT ALL RIBBON CABLES ARE ROUTED AWAY FROM POWER CONDUCTORS.
- 3 MINIMUM WIRE BENDING SPACE SHALL BE 3.00" FROM BOTTOM OF POWERSTACK POWER CONNECTION TO BOTTOM OF ENCLOSURE.
- 4 ENCLOSURE LAYOUT IS DESIGNED FOR CABLE ENTRY/EXIT TO BE TOP/BOTTOM.
- 5 REMOVE ANY HARDWARE ATTACHED TO SWITCH 1.



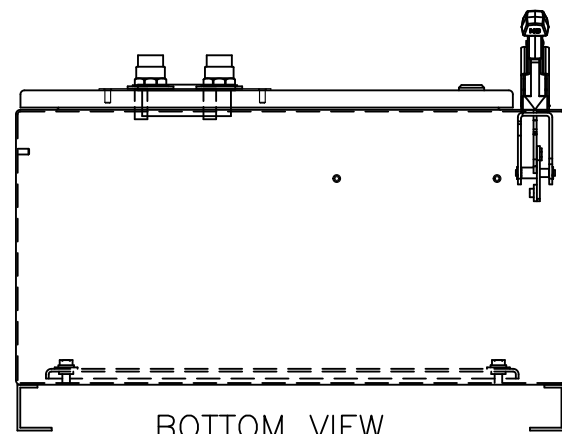
FRONT VIEW



PANEL VIEW



SIDE VIEW



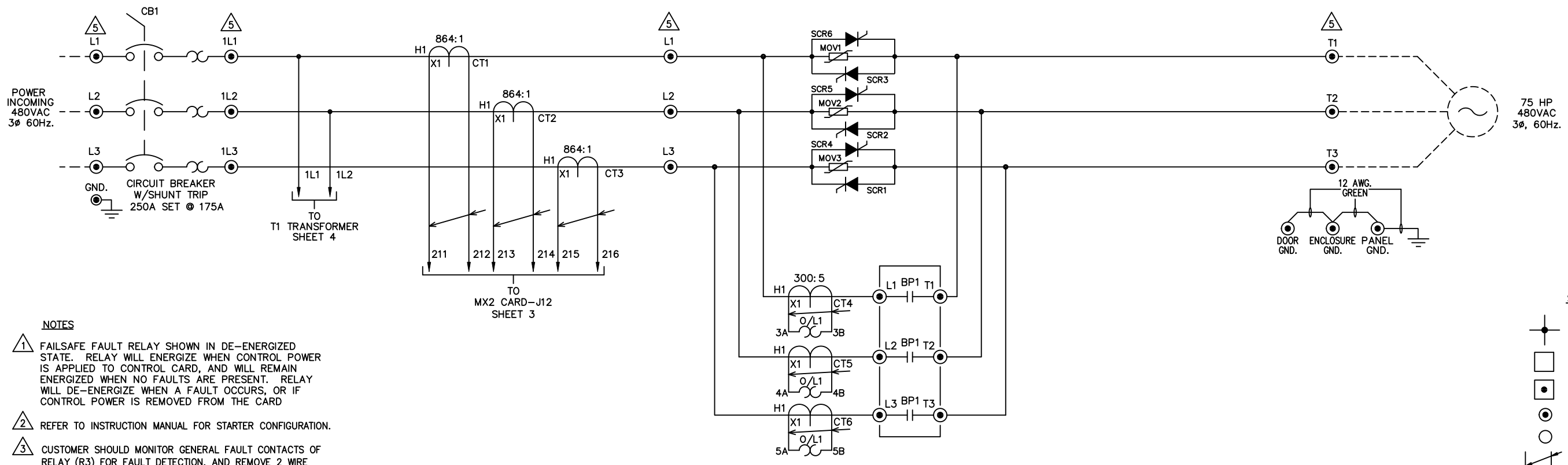
LEGEND

- CB1: CIRCUIT BREAKER
- GND: GROUND LUGS
- PS1: PIN STRIP 3 POINT SHUNT TRIP
- LVSS: RB2 POWER STACK
- CT1-3: CONTROL CARD CT'S
- CT4-6: OVERLOAD CT'S
- BP1: ATL/BYPASS CONTACTOR
- D/L1: OVERLOAD RELAY
- RLY: SS-ATL RELAY CARD
- SW2: LOCAL-OFF-REMOTE SEL. SWITCH
- T1: CONTROL POWER TRANSFORMER
- FU4-5: PRIMARY FUSING (T1)
- FU6: SECONDARY FUSE (T1)
- TH1: THERMOSTAT
- TH2: SPACE HEATER
- DIS: DOOR MOUNTED KEYPAD
- PB1: START PUSHBUTTON
- PB2: STOP PUSHBUTTON
- PB3: RESET PUSHBUTTON
- LT1: RUNNING PILOT LIGHT

<p>20</p> <p>APPR: BDA 9/17/18</p> <p>CHG BY: TUR 9/17/18</p> <p>CHANGED TO</p> <p>3VA BREAKER</p>	<p>12</p> <p>E-4 1 0 5</p> <p>APPR: AES 2/25/13</p> <p>CHG BY: BDA 2/25/13</p> <p>CHANGE-CHANGED</p> <p>REVISION</p> <p>DIAGRAM & REVISED</p> <p>CARD NUMBER SHEET</p>	<p>11</p> <p>E-39 3 0</p> <p>APPR: AES 11/12/12</p> <p>CHG BY: BDA 11/12/12</p> <p>CHANGE-CHANGED</p> <p>BREAKER TO SENTRION</p> <p>E3796</p>	<p>10</p> <p>APPR: JAF 8/13/12</p> <p>CHG BY: BDA 8/13/12</p> <p>CHANGE-REVISED PER</p> <p>WAVE PROJECT REV</p> <p>TO INITIAL RELEASE</p>	<p>DO NOT SCALE DWG</p> <p>THIRD ANGLE PROJECTION</p>	<p>UNLESS OTHERWISE SPECIFIED</p> <p>ALL DIMENSIONS IN INCHES</p> <p>INTERPRET DRAWING PER</p> <p>ASME Y14.5M-1994</p> <p>TOLERANCES: .XX ± .03</p> <p>.XXX ± .015</p> <p>ANGLES ± 1°</p> <p>MATERIAL:</p> <p>FINISH:</p>	<p>TITLE:</p> <p>ENCLOSURE LAYOUT</p> <p>RX2E-075-480-3RKP</p> <p>75HP (96 AMPS) @ 480V</p> <p>(500% CURRENT FOR</p> <p>30SECONDS, 125%</p> <p>CONTINUOUS DUTY RATED)</p>	<p>SIGNATURES</p> <p>DATE</p> <p>DRWN: BDA 3/2/12</p> <p>CHKD:</p> <p>ENG: JAF 3/2/12</p> <p>MFG:</p> <p>SIZE</p> <p>REV</p> <p>D</p> <p>20</p>	<p>BENSCHAW</p> <p>815 ALPHA DRIVE</p> <p>PITTSBURGH, PA. 15238</p> <p>550 BRIGHT STREET</p> <p>LISTOWEL, ONTARIO</p> <p>M4W 3W5</p>
--	--	---	---	---	---	---	---	--

RX2E0754803RKP ON DWG

A
B
C
D
E
F
G
H
I
J
K
L
M
N



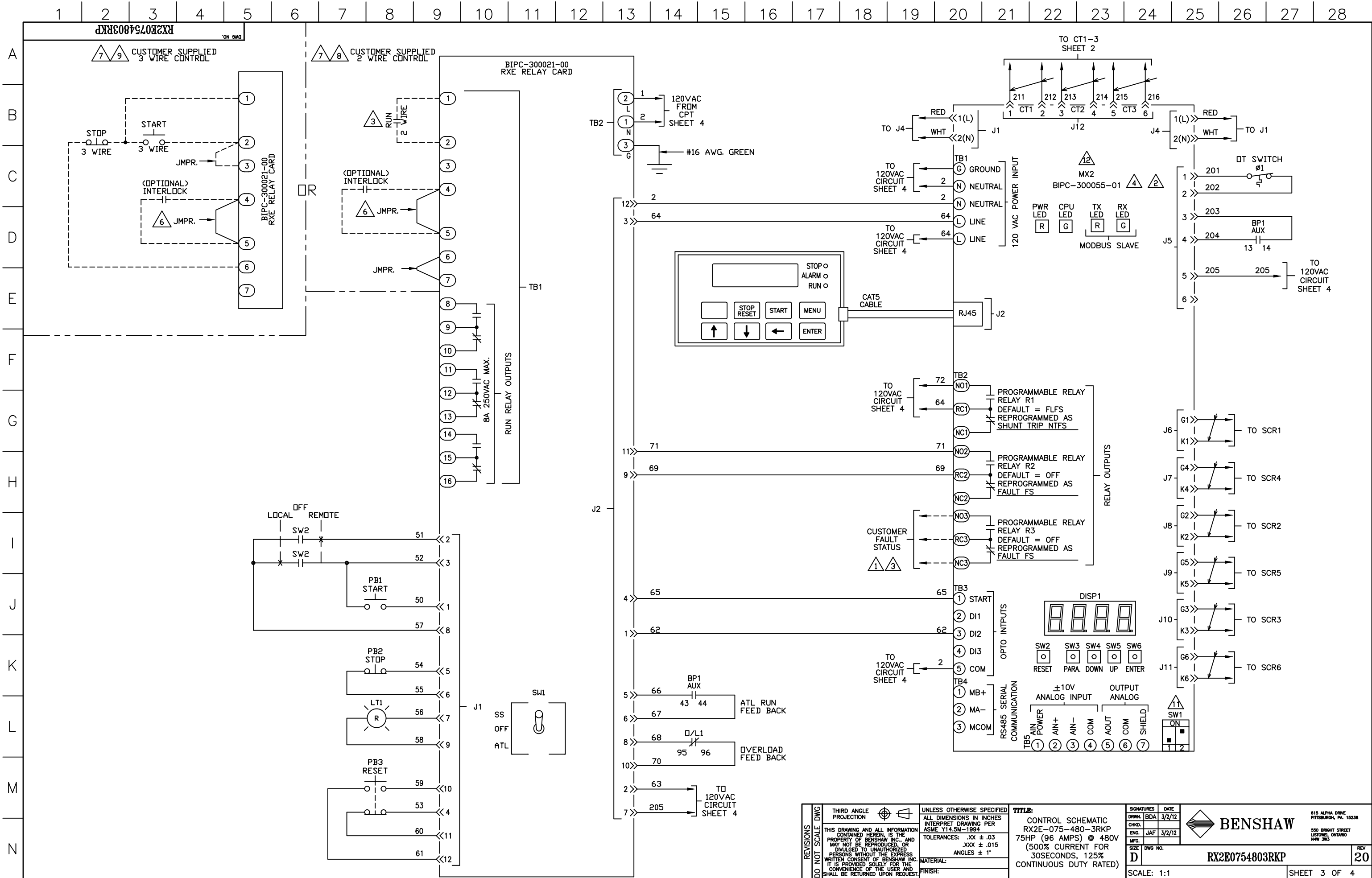
- NOTES**
1. FAILSAFE FAULT RELAY SHOWN IN DE-ENERGIZED STATE. RELAY WILL ENERGIZE WHEN CONTROL POWER IS APPLIED TO CONTROL CARD, AND WILL REMAIN ENERGIZED WHEN NO FAULTS ARE PRESENT. RELAY WILL DE-ENERGIZE WHEN A FAULT OCCURS, OR IF CONTROL POWER IS REMOVED FROM THE CARD
 2. REFER TO INSTRUCTION MANUAL FOR STARTER CONFIGURATION.
 3. CUSTOMER SHOULD MONITOR GENERAL FAULT CONTACTS OF RELAY (R3) FOR FAULT DETECTION, AND REMOVE 2 WIRE RUN COMMAND WHEN A FAULT IS DETECTED.
 4. TIGHTEN CARD WIRING CONNECTIONS TO 2.7-3.5 in. lbs. (0.3-0.4 N-m).
 5. TIGHTEN POWER LUG FIELD WIRING CONNECTIONS TO CHART 1. SPECIFICATIONS. IF BREAKER IS SUPPLIED ON LINE SIDE OF STACK USE TORQUE VALUES ON BREAKER.
 6. REMOVE JUMPER WHEN INTERLOCKS ARE INSTALLED.
 7. SELECT EITHER TWO OR THREE WIRE CONTROL.
 8. STARTER SHIPPED SETUP FOR CUSTOMER SUPPLIED REMOTE 2 WIRE CONTROL. IF NO CONTROL IS TO BE USED THEN JUMPERS SHOULD REMAIN AS SHOWN.
 9. IF CUSTOMER SUPPLIED REMOTE 3 WIRE CONTROL IS NEEDED MAKE CUSTOMER CONNECTIONS AS SHOWN.
 10. CHANGE P49 (DI2) TO "FR" (FAULT RESET)
 11. SW1-1: (ANALOG INPUT) UP = CURRENT, DOWN = VOLTAGE
SW1-2: (ANALOG OUTPUT) UP = VOLTAGE, DOWN = CURRENT
 12. PROGRAM (P78), FUN (03), CT RATIO = 864:1

- STANDARD LEGEND**
- WIRE NODE SYMBOL MAY HAVE TERMINAL BLOCK
 - BENSCHAW SUPPLIED TERMINAL BLOCK
 - TERMINAL STRIP
 - POWER CONNECTION
 - PC BOARD TERMINALS
 - TWISTED PAIR
 - TWISTED SHIELDED PAIR
 - SHIELDED WIRE
 - FIELD WIRING

CHART 1
TIGHTENING TORQUE SPECIFICATIONS FOR HEX HEAD SCREWS

BOLT SIZE	BOLTS - GRADE 5	
SAE	(IN. LB)	(FT. LB)
1/4	96-120	8-10
5/16	180-228	15-19
3/8	300-396	25-33
7/16	480-648	40-54
1/2	720-936	60-78

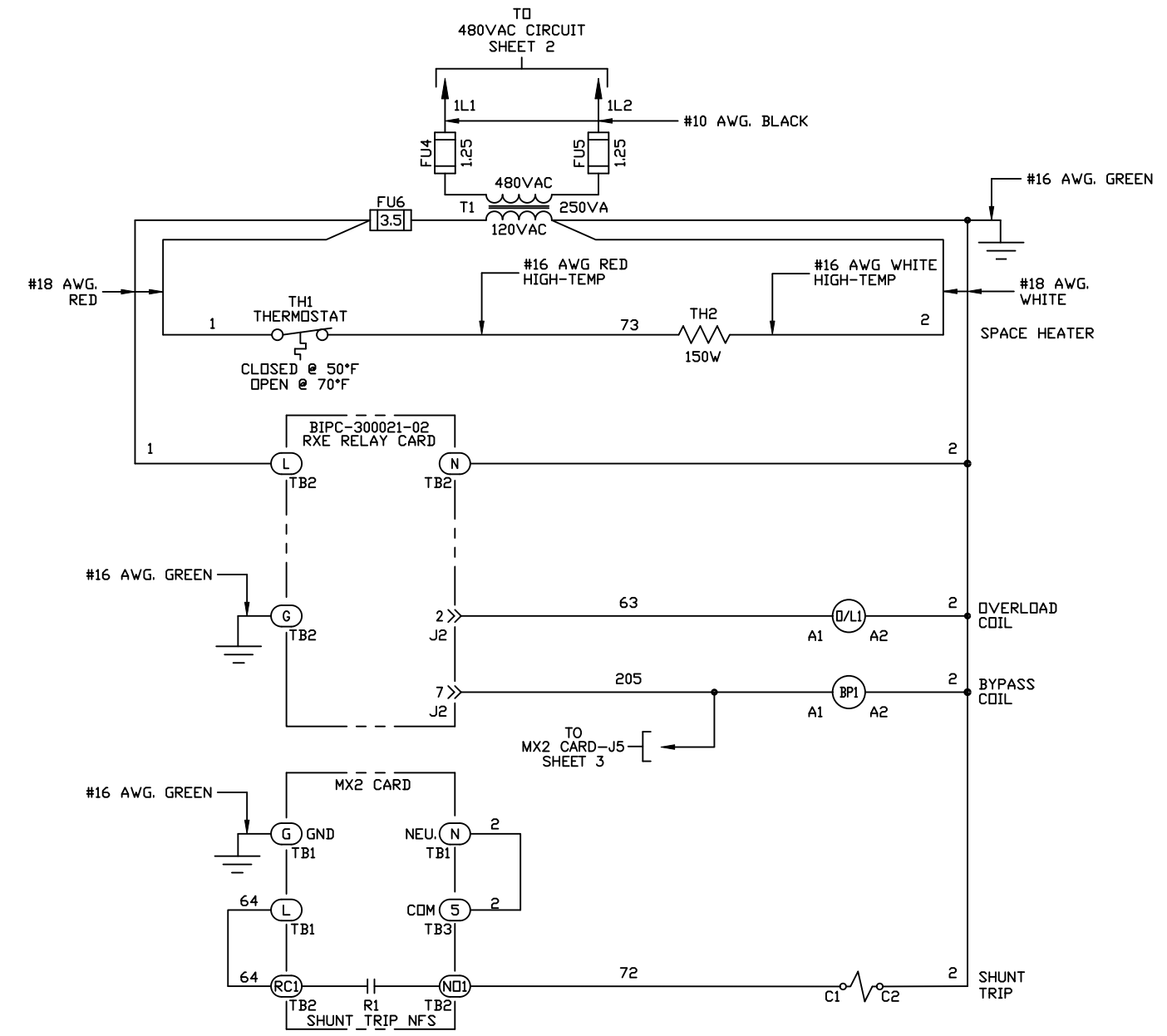
DO NOT SCALE DWG	THIRD ANGLE PROJECTION	UNLESS OTHERWISE SPECIFIED	TITLE: POWER SCHEMATIC RX2E-075-480-3RKP 75HP (96 AMPS) @ 480V (500% CURRENT FOR 30SECONDS, 125% CONTINUOUS DUTY RATED)	SIGNATURES: BDA DATE: 3/2/12	815 ALPHA DRIVE PITTSBURGH, PA. 15238 550 BRIGHT STREET LISTOWEL, ONTARIO M4W 3W3
	THIS DRAWING AND ALL INFORMATION CONTAINED HEREIN, IS THE PROPERTY OF BENSCHAW INC. AND MAY NOT BE REPRODUCED, OR DIVULGED TO UNAUTHORIZED PERSONS WITHOUT THE EXPRESS WRITTEN CONSENT OF BENSCHAW INC. IT IS PROVIDED SOLELY FOR THE CONVENIENCE OF THE USER AND SHALL BE RETURNED UPON REQUEST.	ALL DIMENSIONS IN INCHES ASME Y14.5M-1994 TOLERANCES: .XX ± .03 .XXX ± .015 ANGLES ± 1°		SIZE: D DWG NO.: RX2E0754803RKP REV: 20	
SCALE: 1:1			SHEET 2 OF 4		



REVISIONS DO NOT SCALE DWG	THIRD ANGLE PROJECTION	UNLESS OTHERWISE SPECIFIED ALL DIMENSIONS IN INCHES INTERPRET DRAWING PER ASME Y14.5M-1994	TITLE: CONTROL SCHEMATIC RX2E-075-480-3RKP 75HP (96 AMPS) @ 480V (500% CURRENT FOR 30SECONDS, 125% CONTINUOUS DUTY RATED)	SIGNATURES DRWN: BDA CHK: JAF MFR: JAF DATE: 3/2/12	815 ALPHA DRIVE PITTSBURGH, PA. 15238 550 BRIGHT STREET LISTOWEL, ONTARIO M4W 3W3
	THIS DRAWING AND ALL INFORMATION CONTAINED HEREIN, IS THE PROPERTY OF BENSHAW INC. AND MAY NOT BE REPRODUCED, OR DIVULGED TO UNAUTHORIZED PERSONS WITHOUT THE EXPRESS WRITTEN CONSENT OF BENSHAW INC. IT IS PROVIDED SOLELY FOR THE CONVENIENCE OF THE USER AND SHALL BE RETURNED UPON REQUEST	TOLERANCES: .XX ± .03 .XXX ± .015 ANGLES ± 1°	SIZE D	REV 20	
	MATERIAL: FINISH:	OUTPUT ANALOG ANALOG INPUT ±10V AIN+ AIN- COM AOUT COM SHIELD	DISP1 SW2 SW3 SW4 SW5 SW6 RESET PARA DOWN UP ENTER	SCALE: 1:1	
	TO 120VAC CIRCUIT SHEET 4	RS485 SERIAL COMMUNICATION TB5 1 AIN+ 2 AIN- 3 COM	RELAY OUTPUTS TB2 NO1 PROGRAMMABLE RELAY RELAY R1 RC1 DEFAULT = FLFS NC1 REPROGRAMMED AS SHUNT TRIP NTFS NO2 PROGRAMMABLE RELAY RELAY R2 RC2 DEFAULT = OFF NC2 REPROGRAMMED AS FAULT FS NO3 PROGRAMMABLE RELAY RELAY R3 RC3 DEFAULT = OFF NC3 REPROGRAMMED AS FAULT FS	TO 120VAC CIRCUIT SHEET 4	

RX2E0754803RKP ON DWG

A
B
C
D
E
F
G
H
I
J
K
L
M
N



REVISIONS DO NOT SCALE DWG	THIRD ANGLE PROJECTION	UNLESS OTHERWISE SPECIFIED ALL DIMENSIONS IN INCHES INTERPRET DRAWING PER ASME Y14.5M-1994	TITLE: CONTROL SCHEMATIC RX2E-075-480-3RKP 75HP (96 AMPS) @ 480V (500% CURRENT FOR 30SECONDS, 125% CONTINUOUS DUTY RATED)	SIGNATURES DRWN: BDA CHKD: ENG: JAF MFG: DATE: 3/2/12	BENSRAW 815 ALPHA DRIVE PITTSBURGH, PA. 15238 550 BRIGHT STREET LISTOWEL, ONTARIO M4W 3W3
	THIS DRAWING AND ALL INFORMATION CONTAINED HEREIN, IS THE PROPERTY OF BENSRAW INC. AND MAY NOT BE REPRODUCED, OR DIVULGED TO UNAUTHORIZED PERSONS WITHOUT THE EXPRESS WRITTEN CONSENT OF BENSRAW INC. IT IS PROVIDED SOLELY FOR THE CONVENIENCE OF THE USER AND SHALL BE RETURNED UPON REQUEST	TOLERANCES: .XX ± .03 .XXX ± .015 ANGLES ± 1°	SIZE: D DWG NO.: RX2E0754803RKP	REV: 20	
	MATERIAL: FINISH:	SCALE: 1:1	SHEET 4 OF 4		