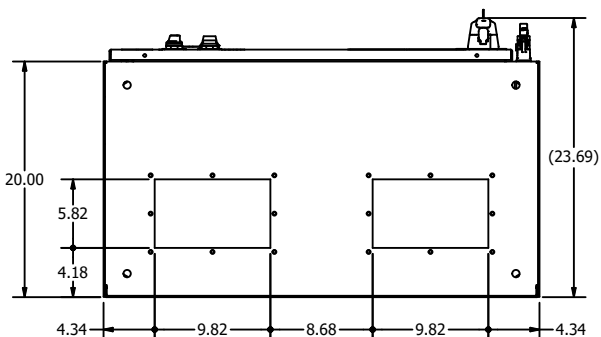
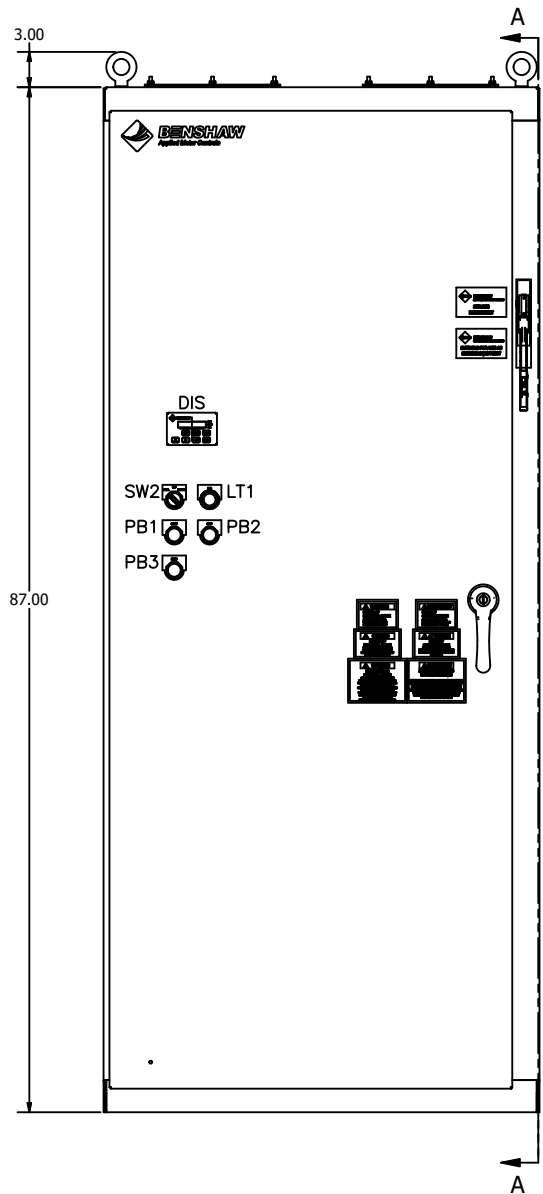
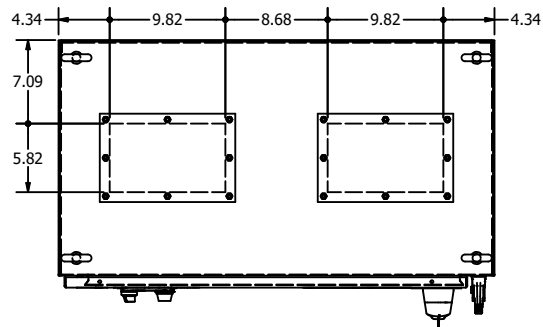


RX2E5004803RKP

A  
B  
C  
D  
E  
F  
G  
H  
I  
J  
K  
L  
M  
N

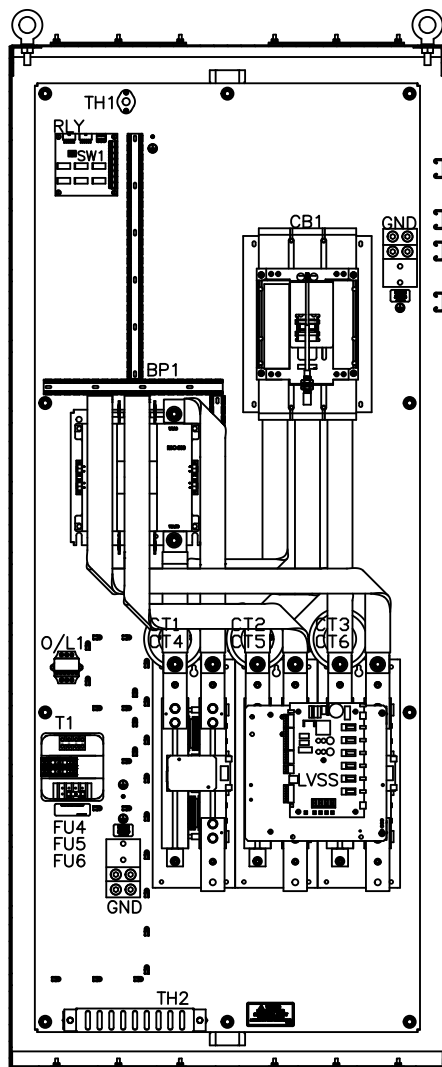


LEGEND

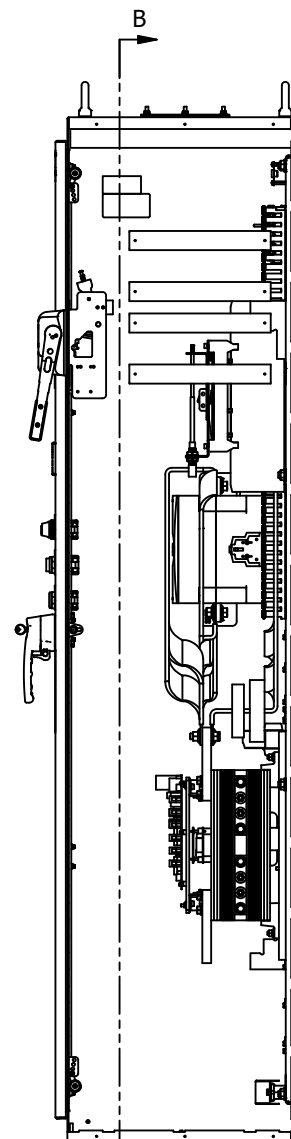
- CB1: CIRCUIT BREAKER
- GND: GROUND LUGS
- LVSS: RB2 POWER STACK
- CT1-3: CONTROL CARD CT'S
- BP1: ATL/BYPASS CONTACTOR
- D/L1: OVERLOAD RELAY
- RLY: SS-ATL RELAY CARD
- SW1: SS-OFF-ATL SEL. SWITCH (RLY)
- PS1: PINSTRIP (3 POINT)
- T1: CONTROL POWER TRANSFORMER
- FU4-5: PRIMARY FUSING (T1)
- FU6: SECONDARY FUSE (T1)
- TH1: THERMOSTAT
- TH2: SPACE HEATER
- DIS: DOOR MOUNTED KEYPAD
- PB1: START PUSHBUTTON
- PB2: STOP PUSHBUTTON
- PB3: RESET PUSHBUTTON
- SW2: LOCAL-OFF-REMOTE SEL. SWITCH
- LT1: RUNNING PILOT LIGHT

NOTES:

- 1 MINIMUM WIRE BENDING SPACE SHALL BE 15.00" FROM TOP OF CIRCUIT BREAKER POWER CONNECTION TO TOP OF ENCLOSURE.
- 2 ENSURE THAT ALL RIBBON CABLES ARE ROUTED AWAY FROM POWER CONDUCTORS.
- 3 MINIMUM WIRE BENDING SPACE SHALL BE 15.00" FROM BOTTOM OF POWERSTACK POWER CONNECTION TO BOTTOM OF ENCLOSURE.
- 4 ENCLOSURE LAYOUT IS DESIGNED FOR CABLE ENTRY/EXIT TO BE TOP/BOTTOM.



SECTION B-B  
SCALE 1 / 8



SECTION A-A  
SCALE 1 / 8

15	APPRD: BDA 9/28/21
	CHG BY: BDA 9/28/21
	CHANGE: CHANGE CIRCUIT BREAKER AND PILOT DEVICES
14	E.S.178
	APPRD: BDA 3/30/17
	CHG BY: BDA 3/30/17
	CHANGE: ADD AUX CONTACT IN FRONT OF CP1 RELAY
13	ECO: E4187
	APPRD: JAF 4/18/13
	CHG BY: JBP 4/18/13
	CHANGE: REMOVED CHASSIS "L" SIDE BUSS BAR.
12	E.4105
	APPRD: AES 2/25/13
	CHG BY: BDA 2/25/13
	CHANGE: CHANGED THERMOSTAT CONNECTION DIAGRAM & RELAY CARD NUMBER SHEET 3
11	E.S.3011
	APPRD: AES 11/12/12
	CHG BY: BDA 11/12/12
	CHANGE: CHANGED BREAKER TO SENTRON E3796
10	
	APPRD: JAF 8/14/12
	CHG BY: BDA 8/14/12
	CHANGE: REVISED PER WAVE PROJECT REV 10 INITIAL RELEASE

THIRD ANGLE PROJECTION

THIS DRAWING AND ALL INFORMATION CONTAINED HEREIN IS THE PROPERTY OF BENSCHAW INC. AND MAY NOT BE REPRODUCED, OR DIVULGED TO UNAUTHORIZED PERSONS WITHOUT THE EXPRESS WRITTEN CONSENT OF BENSCHAW INC. IT IS PROVIDED SOLELY FOR THE CONVENIENCE OF THE USER AND SHALL BE RETURNED UPON REQUEST.

UNLESS OTHERWISE SPECIFIED ALL DIMENSIONS IN INCHES INTERPRET DRAWING PER ASME Y14.5M-1994

TOLERANCES: .XX ± .03  
.XXX ± .015  
ANGLES ± 1°

MATERIAL:  
FINISH:

**TITLE:**  
ENCLOSURE LAYOUT  
RX2E-500-480-3RKP  
500HP (590 AMPS) @ 480V  
(500% CURRENT FOR  
30SECONDS, 125%  
CONTINUOUS DUTY RATED)

SIGNATURES	DATE
DRWN: BDA	8/14/12
CHKD:	
ENG: JAF	8/14/12
MFG:	
SIZE: D	DWG NO. 16

**BENSCHAW**

615 ALPHA DRIVE  
PITTSBURGH, PA. 15238

500 BRIGHT STREET  
LISTOWEL, ONTARIO  
M4W 3W3

SCALE: 1:8

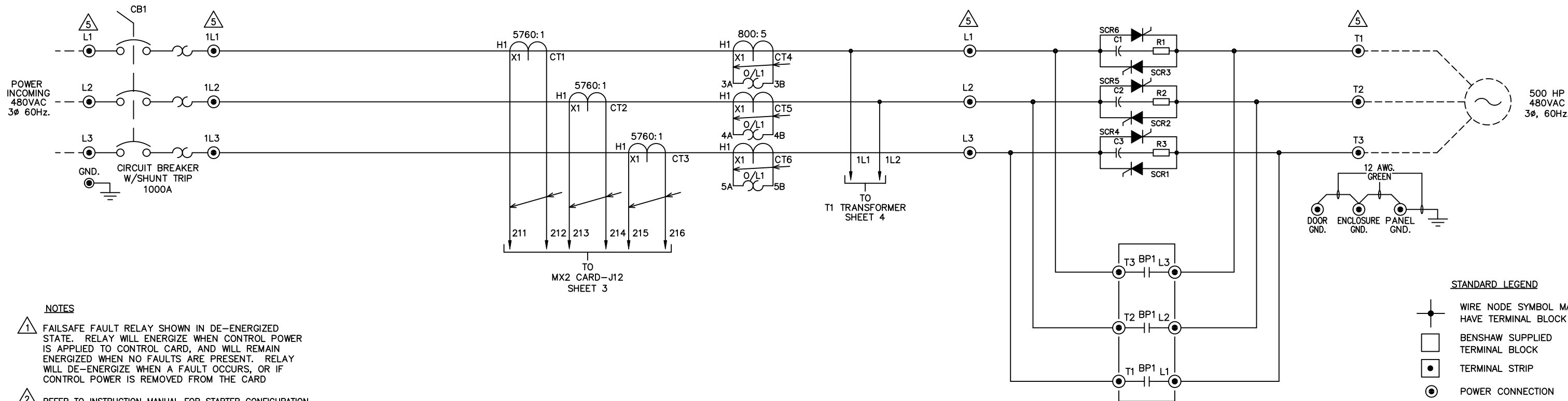
SHEET 1 OF 4

RX2E5004803RKP

ON DWG

BREAKER LUGS ACCEPT  
#3/0-#350KCMIL  
4 PER PHASE

2.00 WIDE BUS TAB WITH  
TWO 0.52 DIA. HOLES 1.75 APART.  
FOR BOLTED CONNECTION



NOTES

- 1 FAILSAFE FAULT RELAY SHOWN IN DE-ENERGIZED STATE. RELAY WILL ENERGIZE WHEN CONTROL POWER IS APPLIED TO CONTROL CARD, AND WILL REMAIN ENERGIZED WHEN NO FAULTS ARE PRESENT. RELAY WILL DE-ENERGIZE WHEN A FAULT OCCURS, OR IF CONTROL POWER IS REMOVED FROM THE CARD
- 2 REFER TO INSTRUCTION MANUAL FOR STARTER CONFIGURATION.
- 3 CUSTOMER SHOULD MONITOR GENERAL FAULT CONTACTS OF RELAY (R3) FOR FAULT DETECTION, AND REMOVE 2 WIRE RUN COMMAND WHEN A FAULT IS DETECTED.
- 4 TIGHTEN CARD WIRING CONNECTIONS TO 2.7-3.5 in. lbs. (0.3-0.4 N-m).
- 5 TIGHTEN POWER LUG FIELD WIRING CONNECTIONS TO CHART 1. SPECIFICATIONS. IF BREAKER IS SUPPLIED ON LINE SIDE OF STACK USE TORQUE VALUES ON BREAKER.
- 6 REMOVE JUMPER WHEN INTERLOCKS ARE INSTALLED.
- 7 SELECT EITHER TWO OR THREE WIRE CONTROL.
- 8 STARTER SHIPPED SETUP FOR CUSTOMER SUPPLIED REMOTE 2 WIRE CONTROL. IF NO CONTROL IS TO BE USED THEN JUMPERS SHOULD REMAIN AS SHOWN.
- 9 IF CUSTOMER SUPPLIED REMOTE 3 WIRE CONTROL IS NEEDED MAKE CUSTOMER CONNECTIONS AS SHOWN.
- 10 CHANGE P49 (DI2) TO "FR" (FAULT RESET)
- 11 SW1-1: (ANALOG INPUT) UP = CURRENT, DOWN = VOLTAGE  
SW1-2: (ANALOG OUTPUT) UP = VOLTAGE, DOWN = CURRENT
- 12 PROGRAM (P78), FUN (03), CT RATIO = 5760:1

STANDARD LEGEND

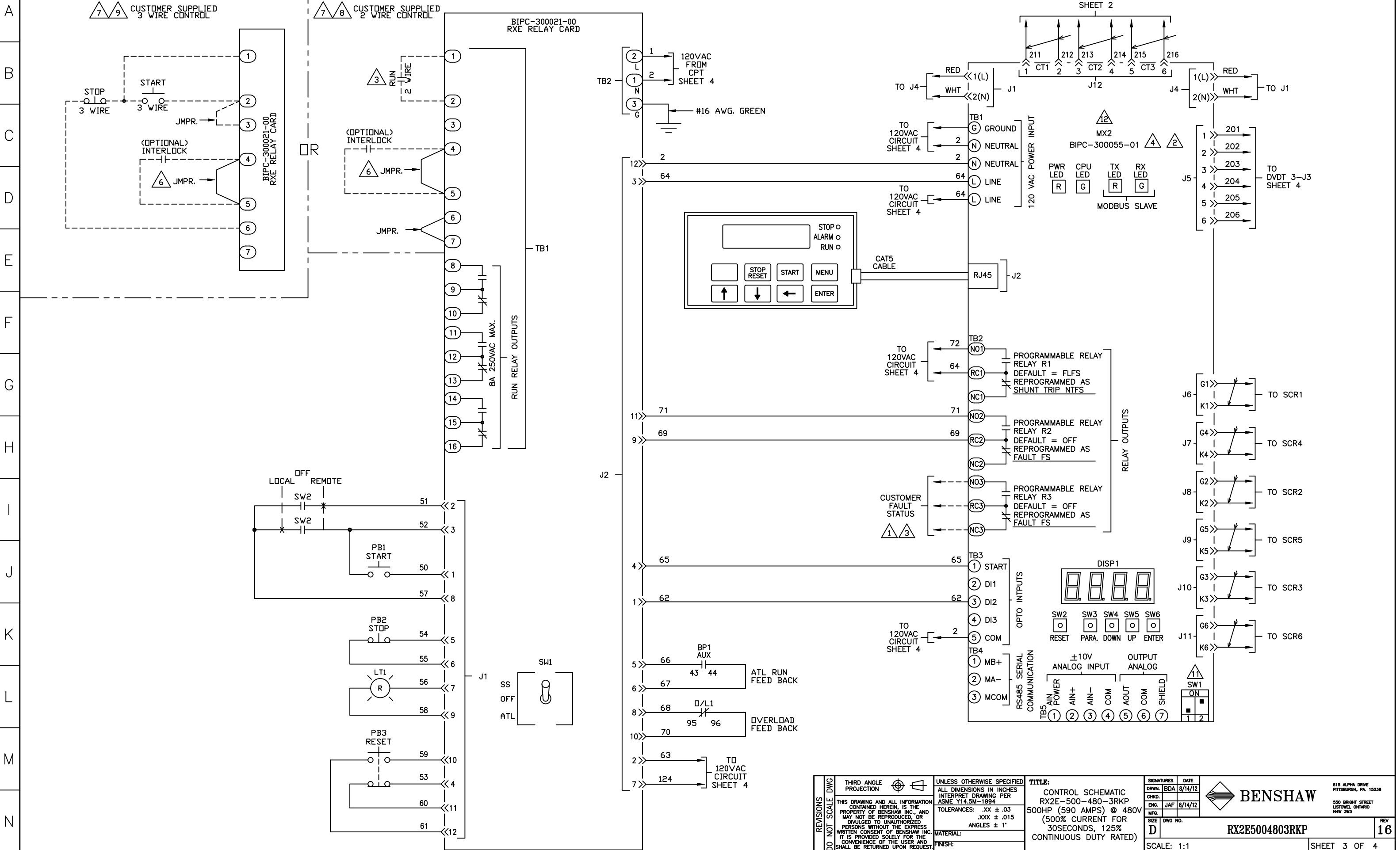
- WIRE NODE SYMBOL MAY HAVE TERMINAL BLOCK
- BENSCHAW SUPPLIED TERMINAL BLOCK
- TERMINAL STRIP
- POWER CONNECTION
- PC BOARD TERMINALS
- TWISTED PAIR
- TWISTED SHIELDED PAIR
- SHIELDED WIRE
- FIELD WIRING

CHART 1

TIGHTENING TORQUE SPECIFICATIONS FOR HEX HEAD SCREWS		
BOLT SIZE	BOLTS - GRADE 5	
SAE	(IN. LB)	(FT. LB)
1/4	96-120	8-10
5/16	180-228	15-19
3/8	300-396	25-33
7/16	480-648	40-54
1/2	720-936	60-78

REVISIONS DO NOT SCALE DWG	THIRD ANGLE PROJECTION	UNLESS OTHERWISE SPECIFIED ALL DIMENSIONS IN INCHES INTERPRET DRAWING PER ASME Y14.5M-1994	TITLE: POWER SCHEMATIC RX2E-500-480-3RKP 500HP (590 AMPS) @ 480V (500% CURRENT FOR 30SECONDS, 125% CONTINUOUS DUTY RATED)	SIGNATURES DRWN: BDA CHKD: ENG: JAF MFG:	DATE 8/14/12 8/14/12	 <b>BENSCHAW</b> 615 ALPHA DRIVE PITTSBURGH, PA. 15238 500 BRIGHT STREET LISTOWEL, ONTARIO N4W 3W3
	THIS DRAWING AND ALL INFORMATION CONTAINED HEREIN, IS THE PROPERTY OF BENSCHAW INC., AND MAY NOT BE REPRODUCED, OR DIVULGED TO UNAUTHORIZED PERSONS WITHOUT THE EXPRESS WRITTEN CONSENT OF BENSCHAW INC. IT IS PROVIDED SOLELY FOR THE CONVENIENCE OF THE USER AND SHALL BE RETURNED UPON REQUEST.		TOLERANCES: .xxx ± .03 .xxx ± .015 ANGLES ± 1°	SIZE D	DWG NO. RX2E5004803RKP	
	MATERIAL: FINISH:		SCALE: 1:1	REV 16		
			SHEET 2 OF 4			

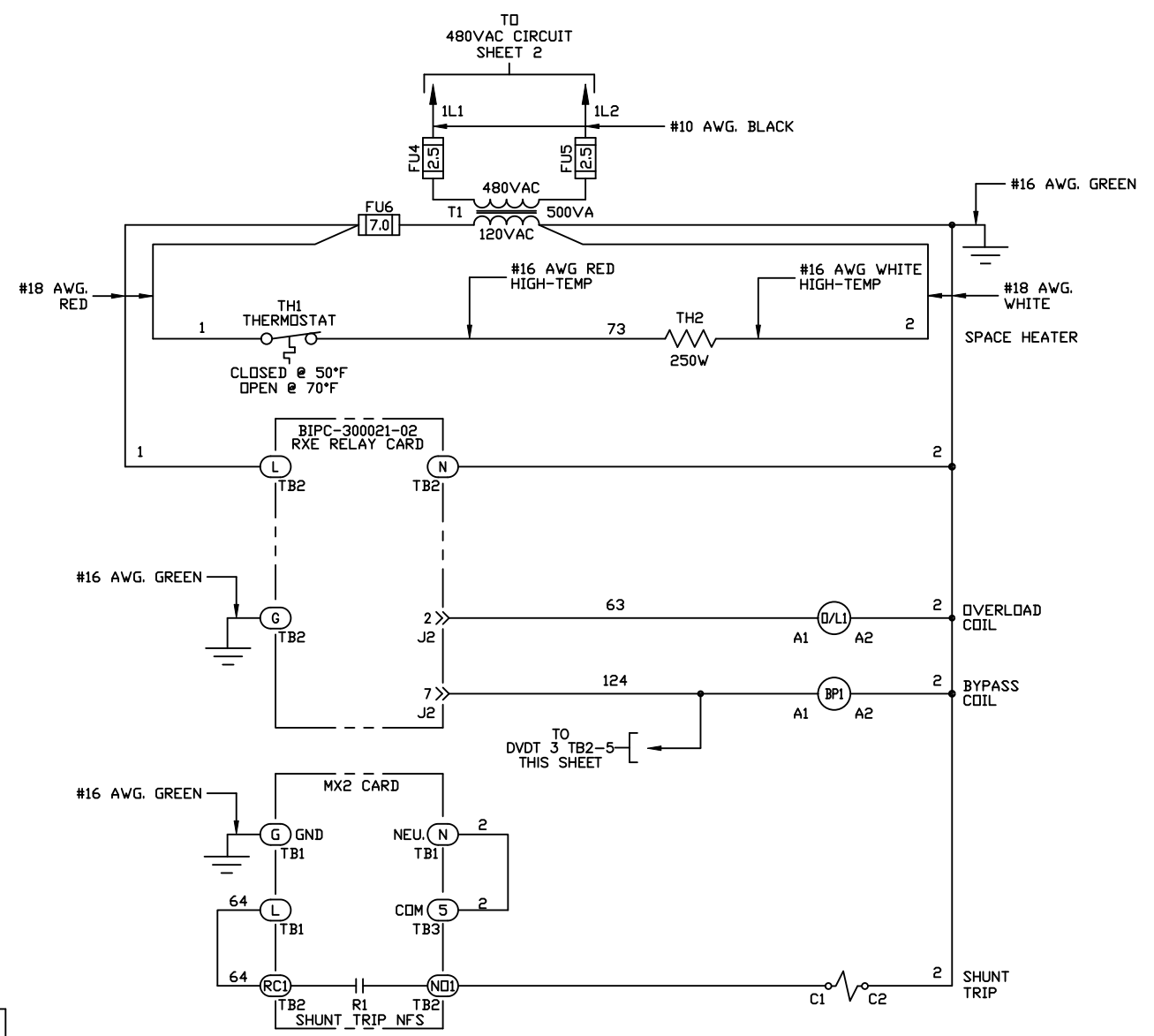
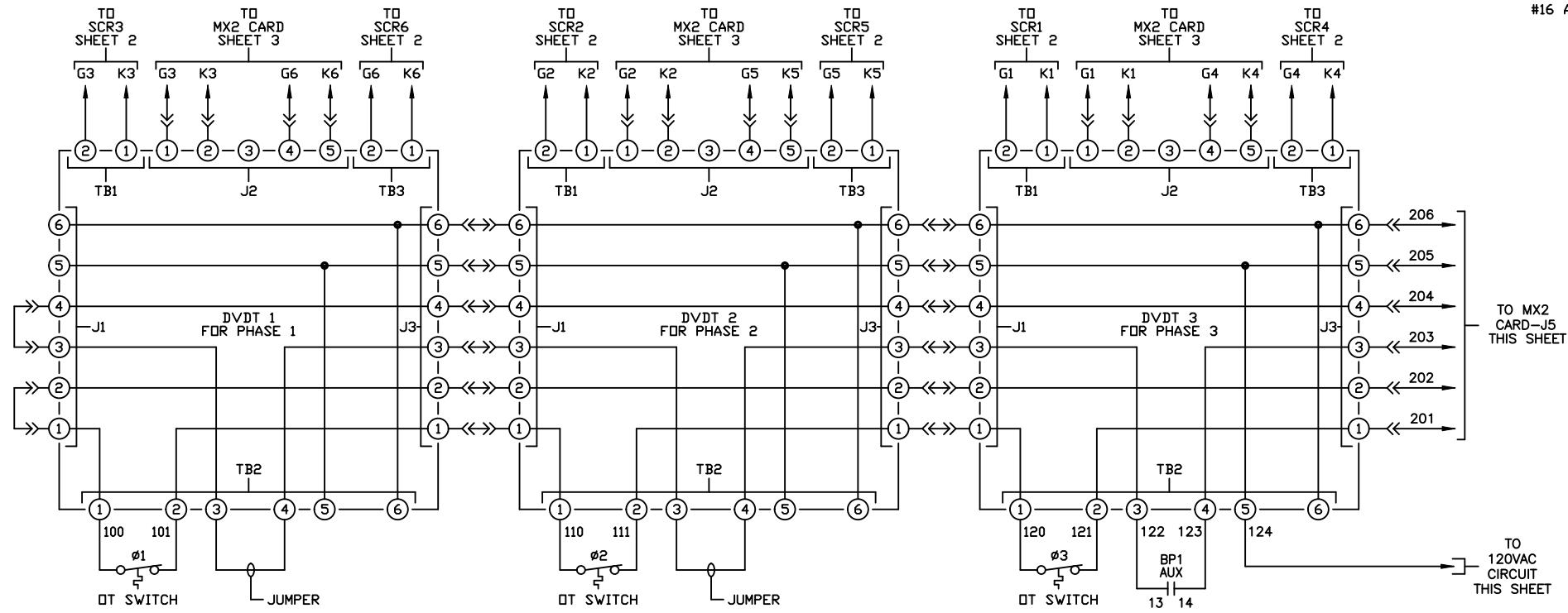
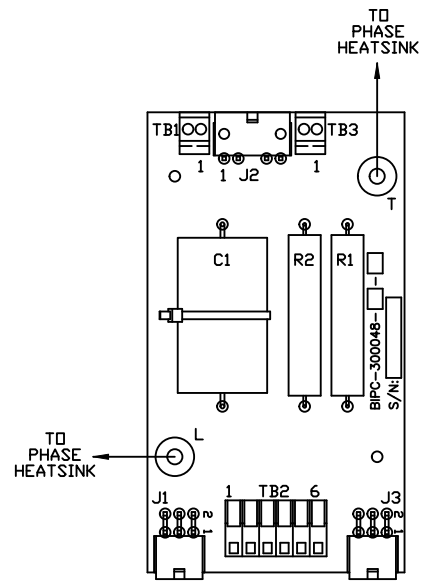
RX2E5004803RKP



<b>REVISIONS</b> DO NOT SCALE DWG	THIRD ANGLE PROJECTION	UNLESS OTHERWISE SPECIFIED ALL DIMENSIONS IN INCHES INTERPRET DRAWING PER ASME Y14.5M-1994	<b>TITLE:</b> CONTROL SCHEMATIC RX2E-500-480-3RKP 500HP (590 AMPS) @ 480V (500% CURRENT FOR 30SECONDS, 125% CONTINUOUS DUTY RATED)	SIGNATURES DATE DRWN. BDA 8/14/12 CHKD. JAF 8/14/12 ENG. JAF 8/14/12 MFG.	615 ALPHA DRIVE PITTSBURGH, PA. 15238 500 BRIGHT STREET LISTOWEL, ONTARIO M4W 3W3	
	THIS DRAWING AND ALL INFORMATION CONTAINED HEREIN IS THE PROPERTY OF BENSCHAW INC., AND MAY NOT BE REPRODUCED, OR DIVULGED TO UNAUTHORIZED PERSONS WITHOUT THE EXPRESS WRITTEN CONSENT OF BENSCHAW INC. IT IS PROVIDED SOLELY FOR THE CONVENIENCE OF THE USER AND SHALL BE RETURNED UPON REQUEST.	TOLERANCES: .XX ± .03 .XXX ± .015 ANGLES ± 1°	MATERIAL: FINISH:	SIZE DWG NO. <b>D</b>		815 ALPHA DRIVE PITTSBURGH, PA. 15238 500 BRIGHT STREET LISTOWEL, ONTARIO M4W 3W3
	SCALE: 1:1			SHEET 3 OF 4		
	REV 16					

RX2E5004803RKP

ON DMD



REVISIONS DO NOT SCALE DWG	THIRD ANGLE PROJECTION	UNLESS OTHERWISE SPECIFIED ALL DIMENSIONS IN INCHES INTERPRET DRAWING PER ASME Y14.5M-1994	<b>TITLE:</b> CONTROL SCHEMATIC RX2E-500-480-3RKP 500HP (590 AMPS) @ 480V (500% CURRENT FOR 30SECONDS, 125% CONTINUOUS DUTY RATED)	SIGNATURES DATE DRWN. BDA 8/14/12 CHKD. JAF 8/14/12 ENG. JAF 8/14/12 MFG.	BENS HAW 615 ALPHA DRIVE PITTSBURGH, PA. 15238 500 BRIGHT STREET LISTOWEL, ONTARIO M4W 3W3	
	THIS DRAWING AND ALL INFORMATION CONTAINED HEREIN, IS THE PROPERTY OF BENS HAW INC., AND MAY NOT BE REPRODUCED, OR DIVULGED TO UNAUTHORIZED PERSONS WITHOUT THE EXPRESS WRITTEN CONSENT OF BENS HAW INC. IT IS PROVIDED SOLELY FOR THE CONVENIENCE OF THE USER AND SHALL BE RETURNED UPON REQUEST.	TOLERANCES: .XX ± .03 .XXX ± .015 ANGLES ± 1°	MATERIAL: FINISH:	SIZE DWG NO. D RX2E5004803RKP		REV 16
	SCALE: 1:1			SHEET 4 OF 4		
	DO NOT SCALE DWG					