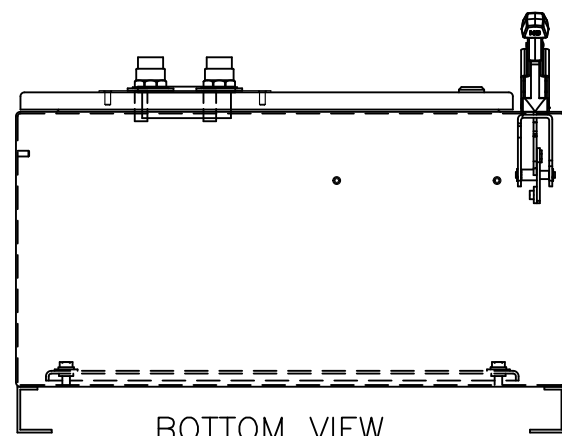
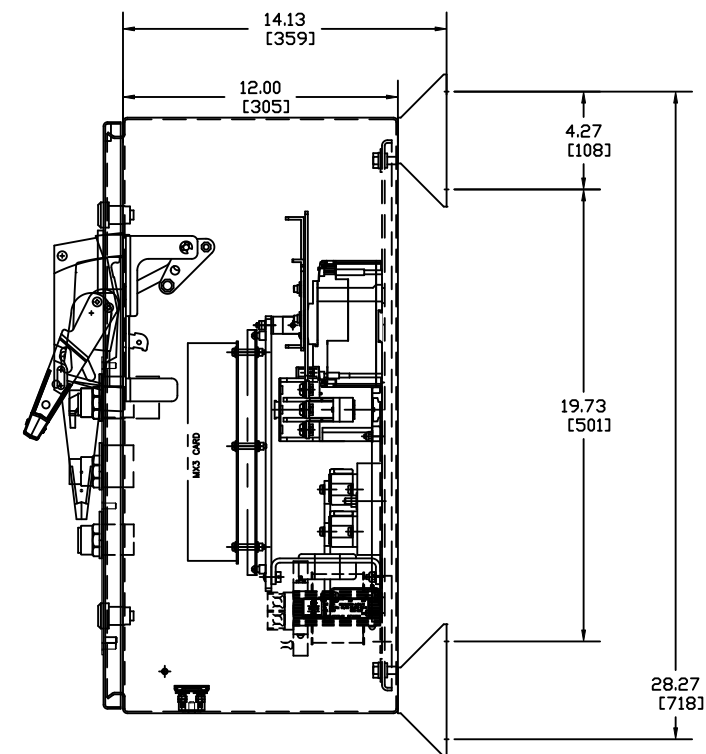
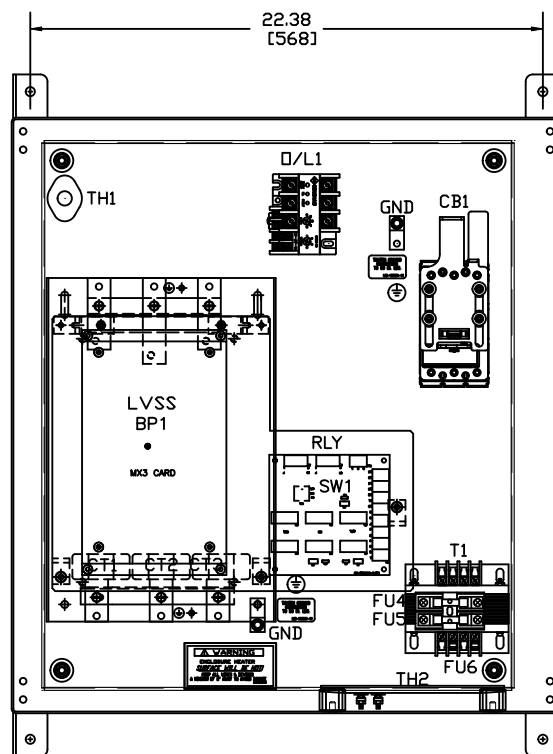
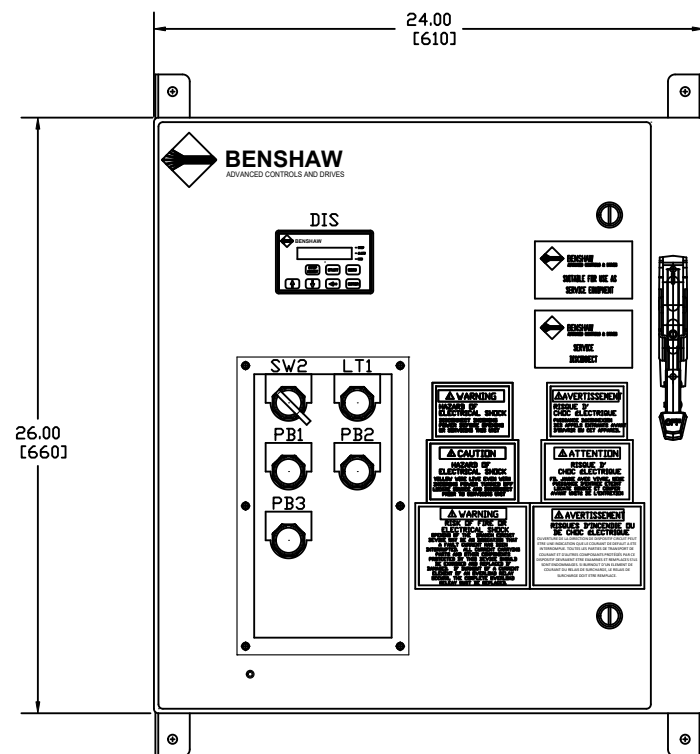


NOTES:

- 1 MINIMUM WIRE BENDING SPACE SHALL BE 3.00" FROM TOP OF CIRCUIT BREAKER POWER CONNECTION TO TOP OF ENCLOSURE.
- 2 ENSURE THAT ALL RIBBON CABLES ARE ROUTED AWAY FROM POWER CONDUCTORS.
- 3 MINIMUM WIRE BENDING SPACE SHALL BE 3.00" FROM BOTTOM OF POWERSTACK POWER CONNECTION TO BOTTOM OF ENCLOSURE.
- 4 ENCLOSURE LAYOUT IS DESIGNED FOR CABLE ENTRY/EXIT TO BE TOP/BOTTOM.
- 5 REMOVE ANY HARDWARE ATTACHED TO SWITCH 1.



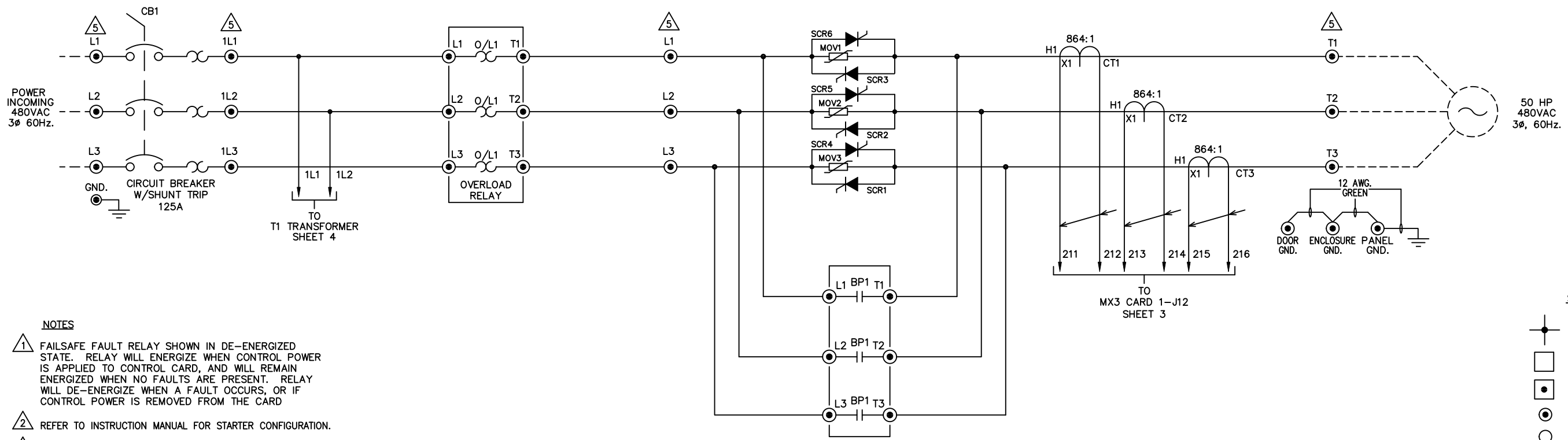
LEGEND

- | | |
|-----------------------------------|-----------------------------------|
| CB1: CIRCUIT BREAKER | DIS: DOOR MOUNTED KEYPAD |
| GND: GROUND LUGS | PB1: START PUSHBUTTON |
| PS1: PIN STRIP 3 POINT SHUNT TRIP | PB2: STOP PUSHBUTTON |
| LVSS: RB2 POWER STACK | PB3: LOCAL-OFF-REMOTE SEL. SWITCH |
| CT1-3: CONTROL CARD CT'S | SW1: RUNNING PILOT LIGHT |
| CT4-6: OVERLOAD CT'S | |
| BP1: ATL/BYPASS CONTACTOR | |
| D/L1: OVERLOAD RELAY | |
| RLY: SS-ATL RELAY CARD | |
| SW2: SS-OFF-ATL SEL. SWITCH (RLY) | |
| T1: CONTROL POWER TRANSFORMER | |
| FU4-5: PRIMARY FUSING (T1) | |
| FU6: SECONDARY FUSE (T1) | |
| TH1: THERMOSTAT | |
| TH2: SPACE HEATER | |

15 APPRD: BDA 8/29/18 CHG BY: BDA 8/29/18 CHANGE: CHANGED TO 3VA BREAKER	12 E-4105 APPRD: AES 2/25/13 CHG BY: BDA 2/25/13 CHANGE: CHANGED CHECKER: BDA DIAGRAM & RELAY CARD NUMBER SHEET 3	11 E-3930 APPRD: AES 11/12/12 CHG BY: BDA 11/12/12 CHANGE: CHANGED BREAKER TO SENTRON	10 E3796 APPRD: JAF 8/13/12 CHG BY: BDA 8/13/12 CHANGE: REVISED PER WAVE PROJECT. REV TO INITIAL RELEASE	<p>THIRD ANGLE PROJECTION</p> <p>UNLESS OTHERWISE SPECIFIED ALL DIMENSIONS IN INCHES INTERPRET DRAWING PER ASME Y14.5M-1994</p> <p>TOLERANCES: .XX ± .03 .XXX ± .015 ANGLES ± 1°</p> <p>MATERIAL: FINISH:</p>	<p>TITLE: ENCLOSURE LAYOUT RX3E-050-480-3RKP 50HP (65 AMPS) @ 480V (500% CURRENT FOR 30SECONDS, 125% CONTINUOUS DUTY RATED)</p>	<table border="1"> <tr> <th>SIGNATURES</th> <th>DATE</th> </tr> <tr> <td>DRWN: BDA</td> <td>3/2/12</td> </tr> <tr> <td>CHKD: JAF</td> <td>3/2/12</td> </tr> <tr> <td>ENG: JAF</td> <td>3/2/12</td> </tr> <tr> <td>MFG:</td> <td></td> </tr> <tr> <td>SIZE: D</td> <td>DWG NO.</td> </tr> </table>	SIGNATURES	DATE	DRWN: BDA	3/2/12	CHKD: JAF	3/2/12	ENG: JAF	3/2/12	MFG:		SIZE: D	DWG NO.	<p>BENSHAW</p> <p>815 ALPHA DRIVE PITTSBURGH, PA. 15238</p> <p>550 BRIGHT STREET LITTONELL, ONTARIO M4W 3K3</p>
SIGNATURES	DATE																		
DRWN: BDA	3/2/12																		
CHKD: JAF	3/2/12																		
ENG: JAF	3/2/12																		
MFG:																			
SIZE: D	DWG NO.																		
<p>SCALE: 1:4</p>					<p>RX3E0504803RKP</p>	<p>15</p>	<p>SHEET 1 OF 4</p>												

RX3E0504803RKP ON DWG

A
B
C
D
E
F
G
H
I
J
K
L
M
N



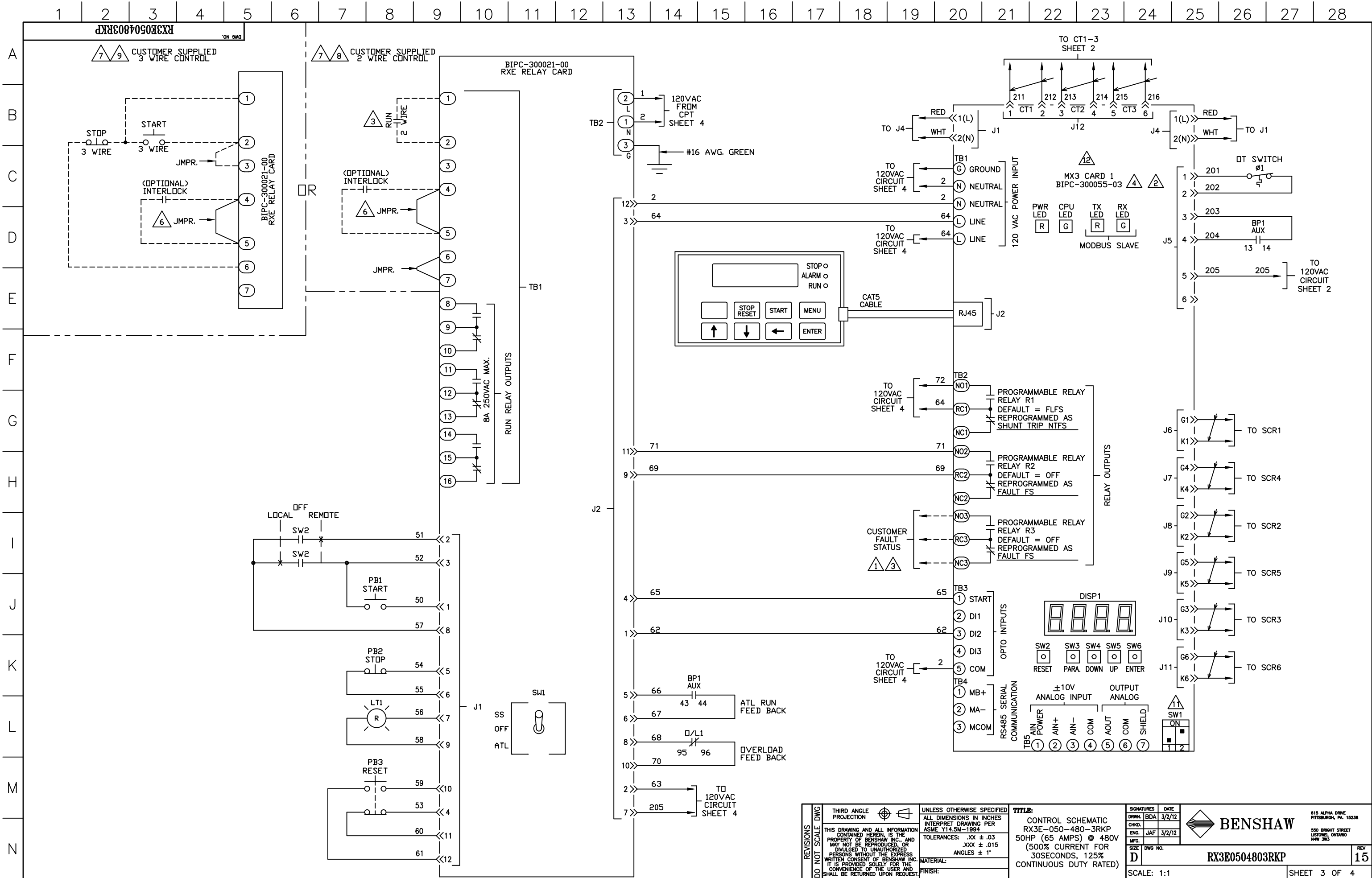
- NOTES**
1. FAILSAFE FAULT RELAY SHOWN IN DE-ENERGIZED STATE. RELAY WILL ENERGIZE WHEN CONTROL POWER IS APPLIED TO CONTROL CARD, AND WILL REMAIN ENERGIZED WHEN NO FAULTS ARE PRESENT. RELAY WILL DE-ENERGIZE WHEN A FAULT OCCURS, OR IF CONTROL POWER IS REMOVED FROM THE CARD
 2. REFER TO INSTRUCTION MANUAL FOR STARTER CONFIGURATION.
 3. CUSTOMER SHOULD MONITOR GENERAL FAULT CONTACTS OF RELAY (R3) FOR FAULT DETECTION, AND REMOVE 2 WIRE RUN COMMAND WHEN A FAULT IS DETECTED.
 4. TIGHTEN CARD WIRING CONNECTIONS TO 2.7-3.5 in. lbs. (0.3-0.4 N-m).
 5. TIGHTEN POWER LUG FIELD WIRING CONNECTIONS TO CHART 1. SPECIFICATIONS. IF BREAKER IS SUPPLIED ON LINE SIDE OF STACK USE TORQUE VALUES ON BREAKER.
 6. REMOVE JUMPER WHEN INTERLOCKS ARE INSTALLED.
 7. SELECT EITHER TWO OR THREE WIRE CONTROL.
 8. STARTER SHIPPED SETUP FOR CUSTOMER SUPPLIED REMOTE 2 WIRE CONTROL. IF NO CONTROL IS TO BE USED THEN JUMPERS SHOULD REMAIN AS SHOWN.
 9. IF CUSTOMER SUPPLIED REMOTE 3 WIRE CONTROL IS NEEDED MAKE CUSTOMER CONNECTIONS AS SHOWN.
 10. CHANGE P49 (DI2) TO "FR" (FAULT RESET)
 11. SW1-1: (ANALOG INPUT) UP = CURRENT, DOWN = VOLTAGE
SW1-2: (ANALOG OUTPUT) UP = VOLTAGE, DOWN = CURRENT
 12. PROGRAM (P78), FUN (03), CT RATIO = 864:1

- STANDARD LEGEND**
- WIRE NODE SYMBOL MAY HAVE TERMINAL BLOCK
 - BENSCHAW SUPPLIED TERMINAL BLOCK
 - TERMINAL STRIP
 - POWER CONNECTION
 - PC BOARD TERMINALS
 - TWISTED PAIR
 - TWISTED SHIELDED PAIR
 - SHIELDED WIRE
 - FIELD WIRING

CHART 1
TIGHTENING TORQUE SPECIFICATIONS FOR HEX HEAD SCREWS

BOLT SIZE	BOLTS - GRADE 5	
SAE	(IN. LB)	(FT. LB)
1/4	96-120	8-10
5/16	180-228	15-19
3/8	300-396	25-33
7/16	480-648	40-54
1/2	720-936	60-78

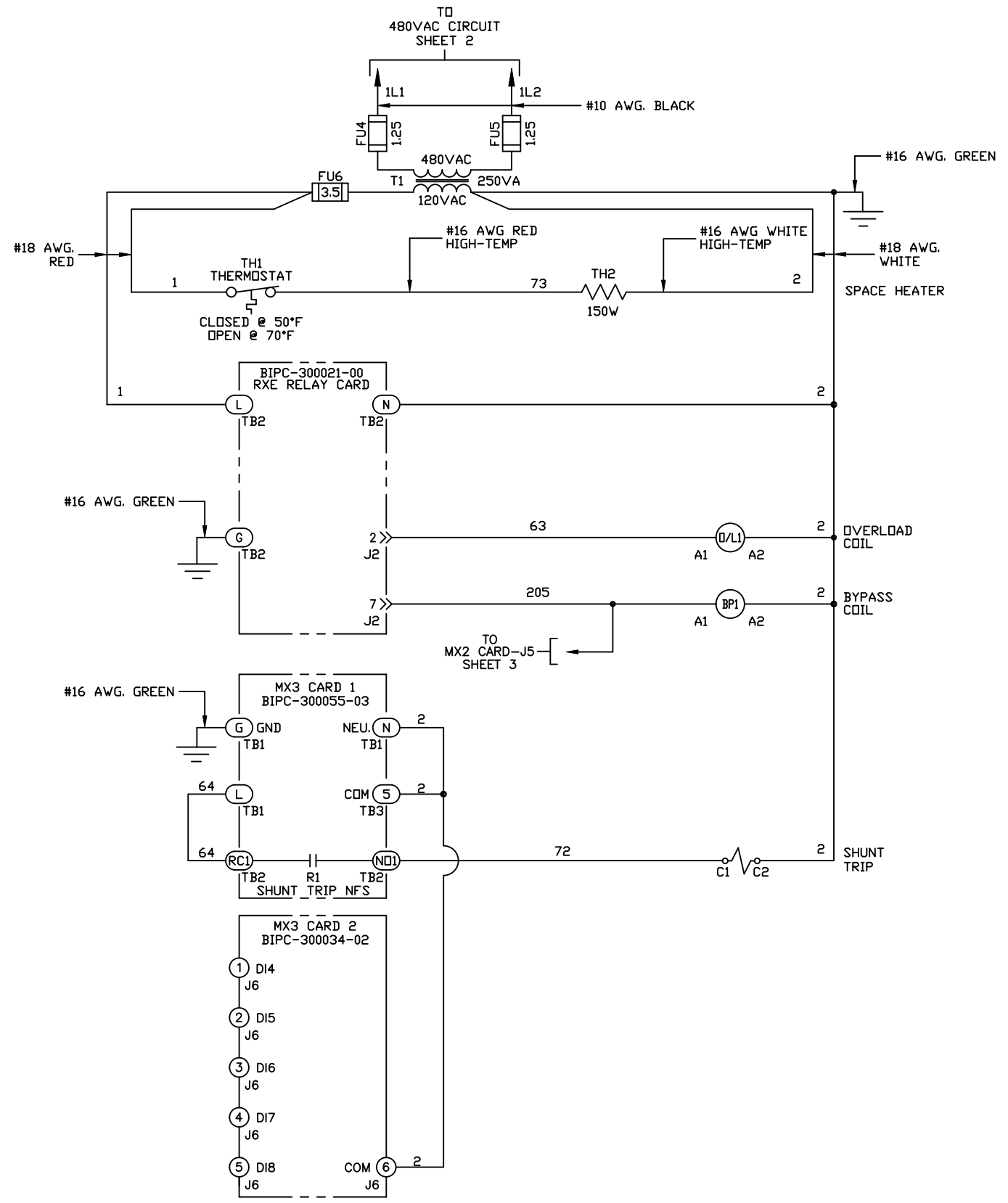
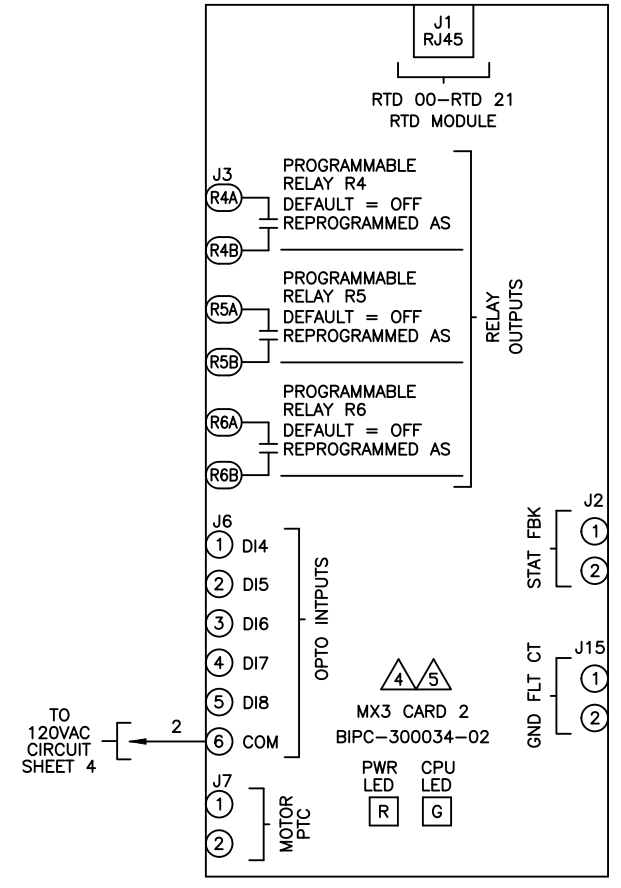
DO NOT SCALE DWG	THIRD ANGLE PROJECTION	UNLESS OTHERWISE SPECIFIED	TITLE: POWER SCHEMATIC RX3E-050-480-3RKP 50HP (65 AMPS) @ 480V (500% CURRENT FOR 30SECONDS, 125% CONTINUOUS DUTY RATED)	SIGNATURES: BDA DATE: 3/2/12	815 ALPHA DRIVE PITTSBURGH, PA. 15238 550 BRIGHT STREET LISTOWEL, ONTARIO M4W 3W3
	THIS DRAWING AND ALL INFORMATION CONTAINED HEREIN, IS THE PROPERTY OF BENSCHAW INC. AND MAY NOT BE REPRODUCED, OR DIVULGED TO UNAUTHORIZED PERSONS WITHOUT THE EXPRESS WRITTEN CONSENT OF BENSCHAW INC. IT IS PROVIDED SOLELY FOR THE CONVENIENCE OF THE USER AND SHALL BE RETURNED UPON REQUEST.	ALL DIMENSIONS IN INCHES INTERPRET DRAWING PER ASME Y14.5M-1994 TOLERANCES: .XX ± .03 .XXX ± .015 ANGLES ± 1°		MFG: JAF DATE: 3/2/12	
		MATERIAL:		DWG NO.: RX3E0504803RKP	REV: 15
		FINISH:		SCALE: 1:1	SHEET 2 OF 4



REVISIONS DO NOT SCALE DWG	THIRD ANGLE PROJECTION	UNLESS OTHERWISE SPECIFIED ALL DIMENSIONS IN INCHES INTERPRET DRAWING PER ASME Y14.5M-1994	TITLE: CONTROL SCHEMATIC RX3E-050-480-3RKP 50HP (65 AMPS) @ 480V (500% CURRENT FOR 30SECONDS, 125% CONTINUOUS DUTY RATED)	SIGNATURES: BDA DATE: 3/2/12	615 ALPHA DRIVE PITTSBURGH, PA. 15238 550 BRIGHT STREET LISTOWEL, ONTARIO N4W 3W3	
	THIS DRAWING AND ALL INFORMATION CONTAINED HEREIN, IS THE PROPERTY OF BENSHAW INC. AND MAY NOT BE REPRODUCED, OR DULGIVED TO UNAUTHORIZED PERSONS WITHOUT THE EXPRESS WRITTEN CONSENT OF BENSHAW INC. IT IS PROVIDED SOLELY FOR THE CONVENIENCE OF THE USER AND SHALL BE RETURNED UPON REQUEST.			MFG: JAF DATE: 3/2/12		REV: 15
	MATERIAL: FINISH:			DRAWING NO.: SIZE: D		DWG NO.: SCALE: 1:1
	TITLE:			DWG NO.: SCALE: 1:1		SHEET 3 OF 4

RX3E0504803RKP ON DWG

A
B
C
D
E
F
G
H
I
J
K
L
M
N



REVISIONS DO NOT SCALE DWG	THIRD ANGLE PROJECTION	UNLESS OTHERWISE SPECIFIED ALL DIMENSIONS IN INCHES INTERPRET DRAWING PER ASME Y14.5M-1994 TOLERANCES: .XX ± .03 .XXX ± .015 ANGLES ± 1° MATERIAL: FINISH:	TITLE: CONTROL SCHEMATIC RX3E-050-480-3RKP 50HP (65 AMPS) @ 480V (500% CURRENT FOR 30SECONDS, 125% CONTINUOUS DUTY RATED)	SIGNATURES DRWN: BDA CHKD: ENG: JAF MFG: SIZE: D DWG NO.:	DATE 3/2/12 3/2/12	BENSRAW 815 ALPHA DRIVE PITTSBURGH, PA. 15238 550 BRIGHT STREET LITTONEL, ONTARIO M4W 3W3	REV 15
	THIS DRAWING AND ALL INFORMATION CONTAINED HEREIN, IS THE PROPERTY OF BENSRAW INC. AND MAY NOT BE REPRODUCED, OR DIVULGED TO UNAUTHORIZED PERSONS WITHOUT THE EXPRESS WRITTEN CONSENT OF BENSRAW INC. IT IS PROVIDED SOLELY FOR THE CONVENIENCE OF THE USER AND SHALL BE RETURNED UPON REQUEST.			RX3E0504803RKP			
	SCALE: 1:1			SHEET 4 OF 4			
	SHEET 4 OF 4						