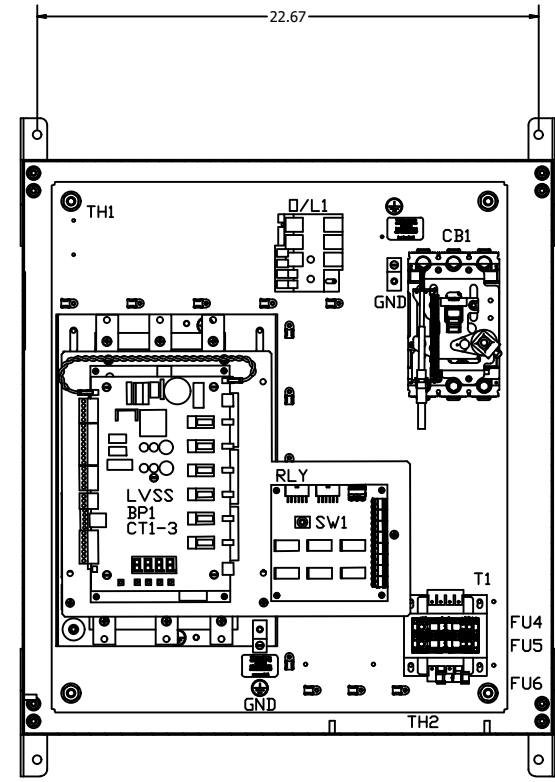
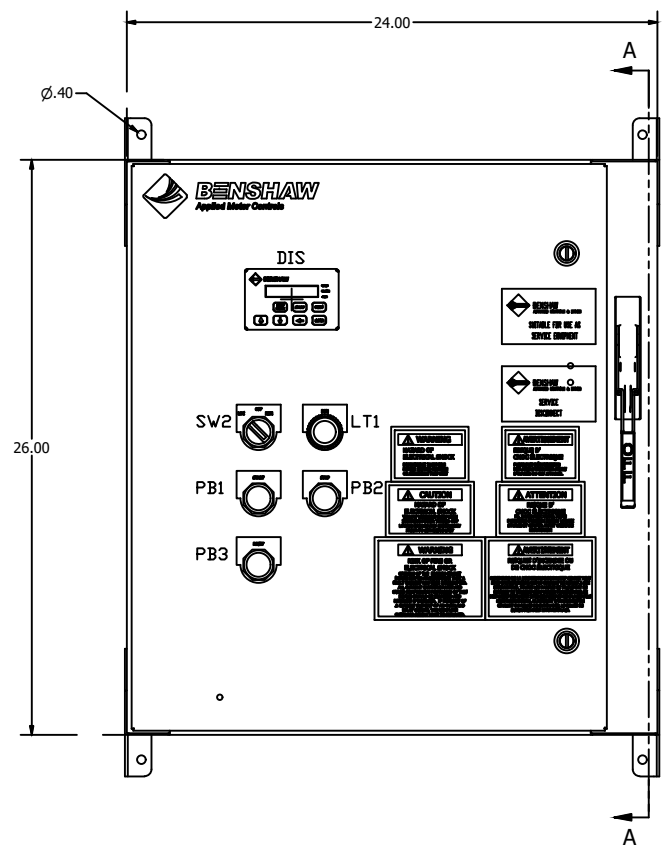


A
B
C
D
E
F
G
H
I
J
K
L
M
N

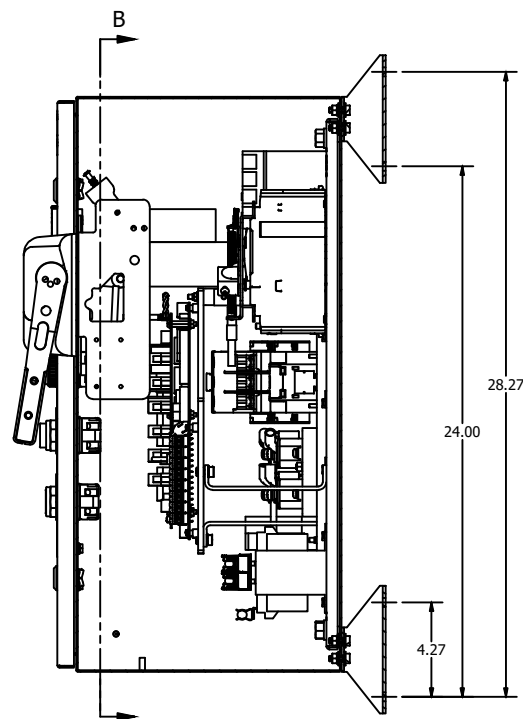
RX3E05048012KP

NOTES:

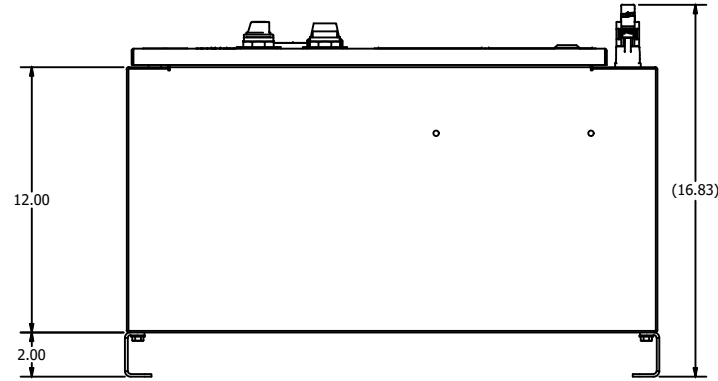
- 1 MINIMUM WIRE BENDING SPACE SHALL BE 3.00" FROM TOP OF CIRCUIT BREAKER POWER CONNECTION TO TOP OF ENCLOSURE.
- 2 ENSURE THAT ALL RIBBON CABLES ARE ROUTED AWAY FROM POWER CONDUCTORS.
- 3 MINIMUM WIRE BENDING SPACE SHALL BE 3.00" FROM BOTTOM OF POWERSTACK POWER CONNECTION TO BOTTOM OF ENCLOSURE.
- 4 ENCLOSURE LAYOUT IS DESIGNED FOR CABLE ENTRY/EXIT TO BE TOP/BOTTOM.
- 5 REMOVE ANY HARDWARE ATTACHED TO SWITCH 1.



SECTION B-B
SCALE 1 / 4



SECTION A-A
SCALE 1 / 4



LEGEND

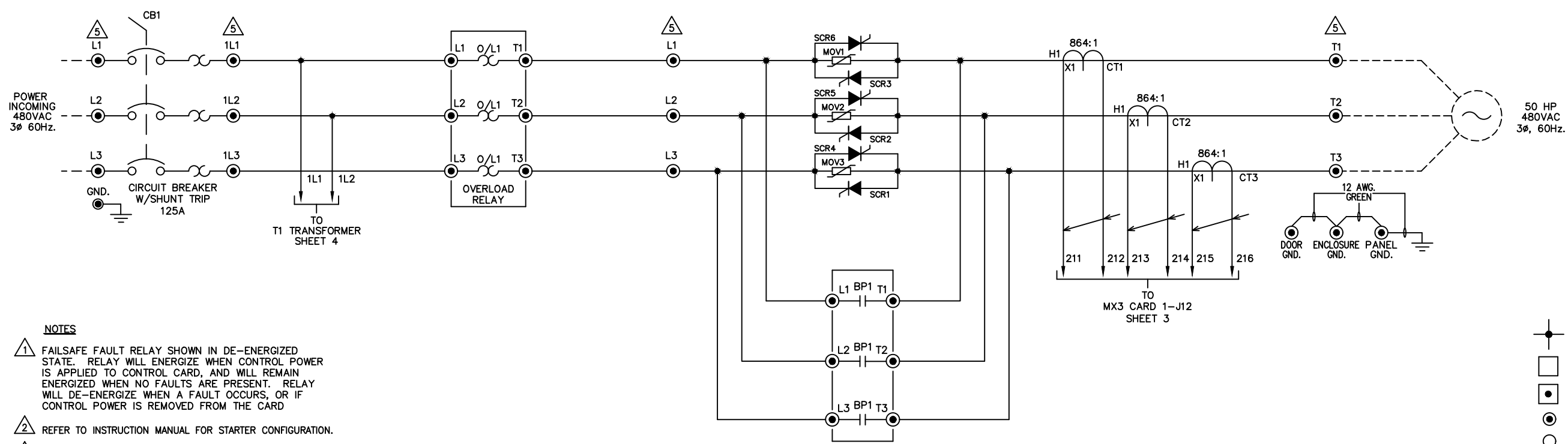
- | | |
|-----------------------------------|------------------------------|
| CB1: CIRCUIT BREAKER | DIS: DOOR MOUNTED KEYPAD |
| GND: GROUND LUGS | PB1: START PUSHBUTTON |
| PS1: PIN STRIP 3 POINT SHUNT TRIP | PB2: STOP PUSHBUTTON |
| LVSS: RB3 POWER STACK | SW1: LDC-OFF-REM SEL. SWITCH |
| CT1-3: CONTROL CARD CT'S | LT1: RUNNING PILOT LIGHT |
| CT4-6: OVERLOAD CT'S | |
| BP1: ATL/BYPASS CONTACTOR | |
| D/L1: OVERLOAD RELAY | |
| RLY: SS-ATL RELAY CARD | |
| SW2: SS-OFF-ATL SEL. SWITCH (RLY) | |
| T1: CONTROL POWER TRANSFORMER | |
| FU4-5: PRIMARY FUSING (T1) | |
| FU6: SECONDARY FUSE (T1) | |

<p>ECC01085518 APPRD: BDA 4/11/24 CHG BY: RWSS 4/11/24 CHANGE CHANGED LEGEND ON SW2 TO LDC-OFF-REM FROM LOCAL-OFF-REMOTE</p>	<p>17 APPRD: BDA 9/30/21 CHG BY: BDA 9/30/21 CHANGE CHANGED CIRCUIT BREAKER AND PILOT DEVICES</p>	<p>16 APPRD: BDA 8/29/18 CHG BY: BDA 8/29/18 CHANGE CHANGED TO 3VA BREAKER</p>	<p>12 E: 4.1.0.5 APPRD: AES 2/26/13 CHG BY: BDA 2/26/13 CHANGE CHANGED CUSTOMER CONNECTION CARD NUMBER SHEET 3</p>	<p>11 E: 3.9.3.0 APPRD: AES 11/12/12 CHANGE CHANGED BREAKER TO SENTRON</p>	<p>10 E: 3.7.9.6 APPRD: JAF 8/13/12 CHG BY: BDA 8/13/12 CHANGE REVISOR PER HAVE PROJECT REVISOR TO INITIAL RELEASE</p>	<p>REVISIONS DO NOT SCALE DWG</p>	<p>THIRD ANGLE PROJECTION</p> <p>THIS DRAWING AND ALL INFORMATION CONTAINED HEREIN IS THE PROPERTY OF BENSCHAW INC. AND MAY NOT BE REPRODUCED OR DIVULGED TO UNAUTHORIZED PERSONS WITHOUT THE EXPRESS WRITTEN CONSENT OF BENSCHAW INC. IT IS PROVIDED SOLELY FOR THE CONVENIENCE OF THE USER AND SHALL BE RETURNED UPON REQUEST.</p>	<p>UNLESS OTHERWISE SPECIFIED ALL DIMENSIONS IN INCHES INTERPRET DRAWING PER ASME Y14.5M-1994 TOLERANCES: .XX ± .03 .XXX ± .015 ANGLES ± 1°</p>	<p>TITLE: ENCLOSURE LAYOUT RX3E-050-480-12KP 50HP (65 AMPS) @ 480V (500% CURRENT FOR 30SECONDS, 125% CONTINUOUS DUTY RATED)</p>	<table border="1" style="width: 100%; border-collapse: collapse;"> <tr> <th>SIGNATURES</th> <th>DATE</th> </tr> <tr> <td>DRWN: BDA</td> <td>3/2/12</td> </tr> <tr> <td>CHD:</td> <td></td> </tr> <tr> <td>ENG: JAF</td> <td>3/2/12</td> </tr> <tr> <td>MFG:</td> <td></td> </tr> <tr> <td>SIZE D</td> <td>DWG NO.</td> </tr> </table>	SIGNATURES	DATE	DRWN: BDA	3/2/12	CHD:		ENG: JAF	3/2/12	MFG:		SIZE D	DWG NO.	<p style="text-align: center;">BENSCHAW</p> <p style="font-size: small;">615 ALPHA DRIVE PITTSBURGH, PA. 15238 550 BRIGHT STREET LISTON, ONTARIO M4W 3W5</p>	<p style="text-align: center;">RX3E05048012KP</p>	<p style="text-align: right;">REV 18</p>
SIGNATURES	DATE																								
DRWN: BDA	3/2/12																								
CHD:																									
ENG: JAF	3/2/12																								
MFG:																									
SIZE D	DWG NO.																								
SCALE: 1:4										SHEET 1 OF 4															

RX3E05048012KP

BREAKER LUGS ACCEPT
 WIRE SIZE RANGE: (1) 14AWG TIGHTENING TORQUE: 36.2LB-IN (4.1Nm)
 WIRE SIZE RANGE: (1) 12-10AWG TIGHTENING TORQUE: 47.8LB-IN (5.4Nm)
 WIRE SIZE RANGE: (1) 8-2/0AWG TIGHTENING TORQUE: 133.6LB-IN (15.1Nm)

1.00 WIDE BUS TAB WITH
 0.28 DIA. HOLE
 FOR BOLTED CONNECTION



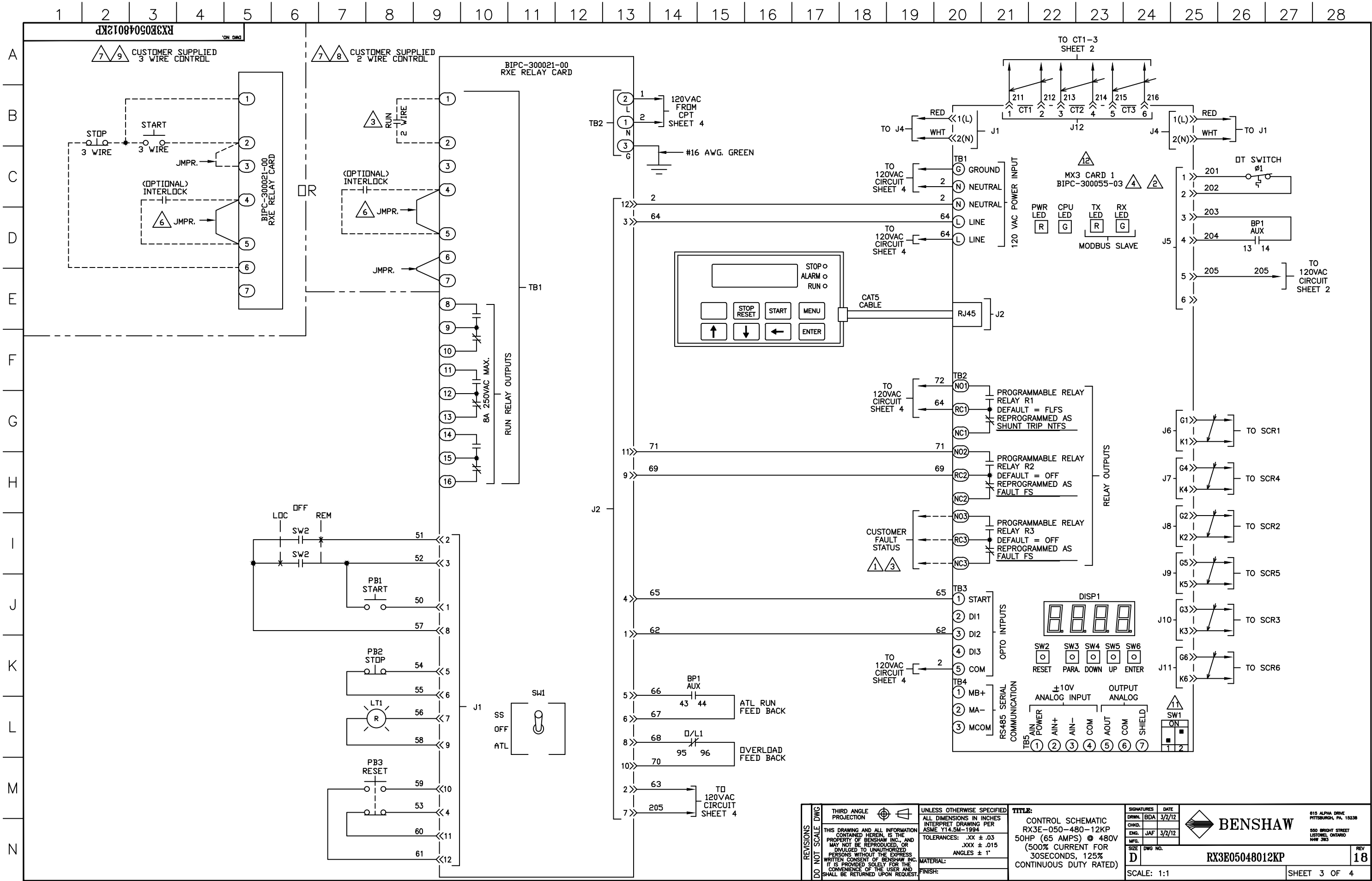
- NOTES**
1. FAILSAFE FAULT RELAY SHOWN IN DE-ENERGIZED STATE. RELAY WILL ENERGIZE WHEN CONTROL POWER IS APPLIED TO CONTROL CARD, AND WILL REMAIN ENERGIZED WHEN NO FAULTS ARE PRESENT. RELAY WILL DE-ENERGIZE WHEN A FAULT OCCURS, OR IF CONTROL POWER IS REMOVED FROM THE CARD
 2. REFER TO INSTRUCTION MANUAL FOR STARTER CONFIGURATION.
 3. CUSTOMER SHOULD MONITOR GENERAL FAULT CONTACTS OF RELAY (R3) FOR FAULT DETECTION, AND REMOVE 2 WIRE RUN COMMAND WHEN A FAULT IS DETECTED.
 4. TIGHTEN CARD WIRING CONNECTIONS TO 2.7-3.5 in. lbs. (0.3-0.4 N-m).
 5. TIGHTEN POWER LUG FIELD WIRING CONNECTIONS TO CHART 1. SPECIFICATIONS. IF BREAKER IS SUPPLIED ON LINE SIDE OF STACK USE TORQUE VALUES ON BREAKER.
 6. REMOVE JUMPER WHEN INTERLOCKS ARE INSTALLED.
 7. SELECT EITHER TWO OR THREE WIRE CONTROL.
 8. STARTER SHIPPED SETUP FOR CUSTOMER SUPPLIED REMOTE 2 WIRE CONTROL. IF NO CONTROL IS TO BE USED THEN JUMPERS SHOULD REMAIN AS SHOWN.
 9. IF CUSTOMER SUPPLIED REMOTE 3 WIRE CONTROL IS NEEDED MAKE CUSTOMER CONNECTIONS AS SHOWN.
 10. CHANGE P49 (DI2) TO "FR" (FAULT RESET)
 11. SW1-1: (ANALOG INPUT) UP = CURRENT, DOWN = VOLTAGE
 SW1-2: (ANALOG OUTPUT) UP = VOLTAGE, DOWN = CURRENT
 12. PROGRAM (P78), FUN (03), CT RATIO = 864:1

- STANDARD LEGEND**
- WIRE NODE SYMBOL MAY HAVE TERMINAL BLOCK
 - BENSHAW SUPPLIED TERMINAL BLOCK
 - TERMINAL STRIP
 - POWER CONNECTION
 - PC BOARD TERMINALS
 - TWISTED PAIR
 - TWISTED SHIELDED PAIR
 - SHIELDED WIRE
 - FIELD WIRING

CHART 1
 TIGHTENING TORQUE SPECIFICATIONS FOR HEX HEAD SCREWS

BOLT SIZE	BOLTS - GRADE 5	
	(IN. LB)	(FT. LB)
1/4	96-120	8-10
5/16	180-228	15-19
3/8	300-396	25-33
7/16	480-648	40-54
1/2	720-936	60-78

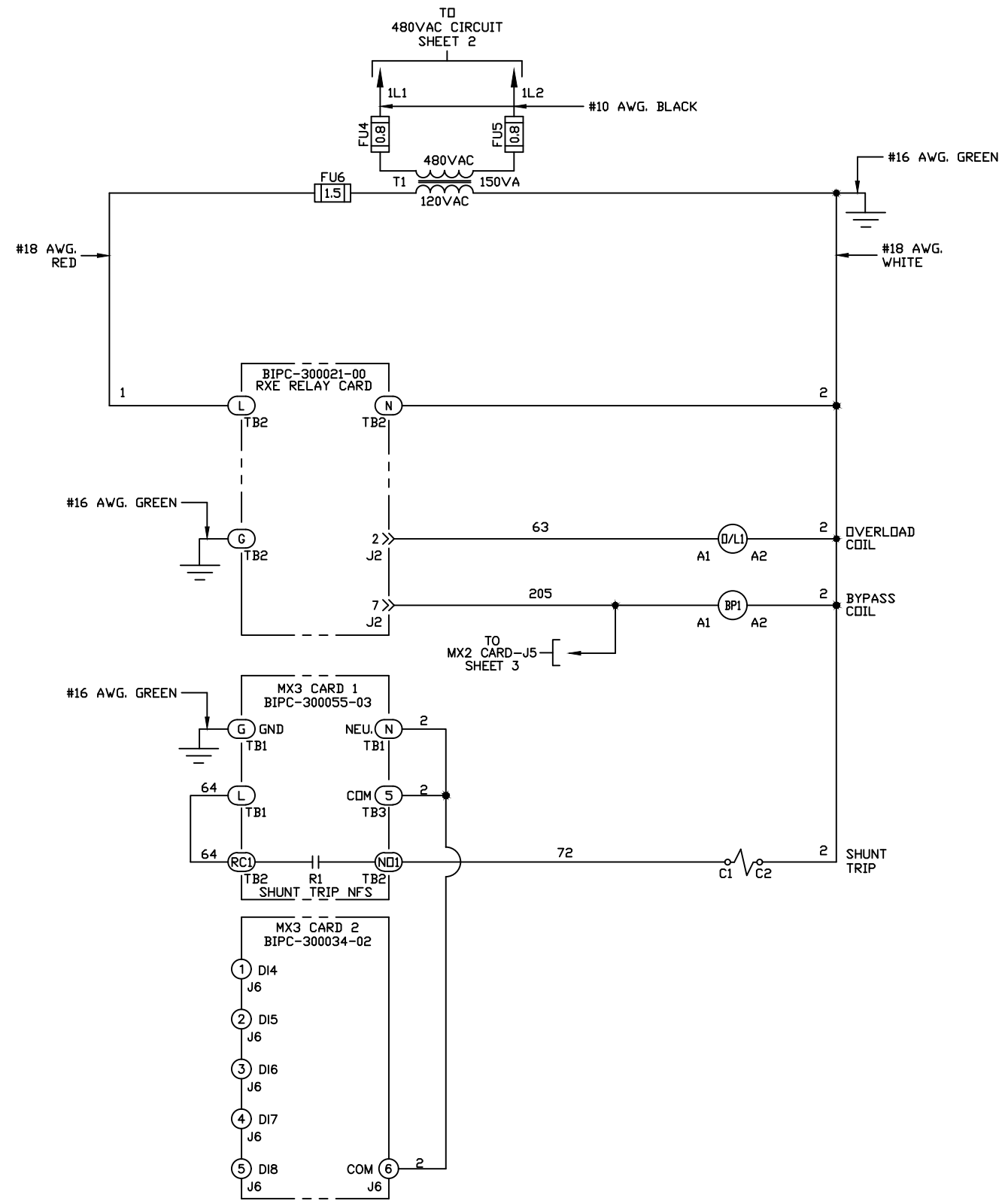
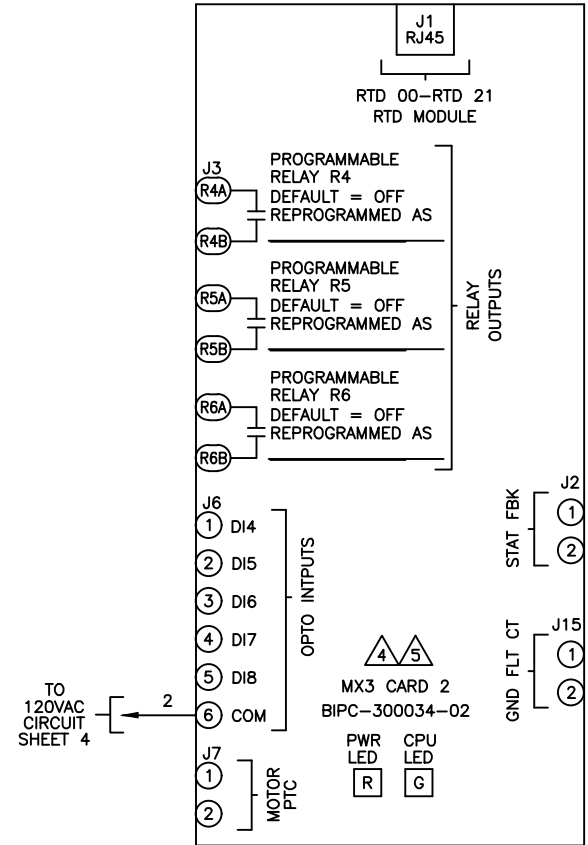
REVISIONS DO NOT SCALE DWG	THIRD ANGLE PROJECTION	UNLESS OTHERWISE SPECIFIED ALL DIMENSIONS IN INCHES INTERPRET DRAWING PER ASME Y14.5M-1994 TOLERANCES: .XX ± .03 .XXX ± .015 ANGLES ± 1°	TITLE: POWER SCHEMATIC RX3E-050-480-12KP 50HP (65 AMPS) @ 480V (500% CURRENT FOR 30SECONDS, 125% CONTINUOUS DUTY RATED)	SIGNATURES: BDA 3/2/12 CHD: ENG: JAF 3/2/12 MFG: DATE: 3/2/12	615 ALPHA DRIVE PITTSBURGH, PA. 15238 550 BRIGHT STREET LISTOWEL, ONTARIO M4W 3W5
	THIS DRAWING AND ALL INFORMATION CONTAINED HEREIN IS THE PROPERTY OF BENSHAW INC., AND MAY NOT BE REPRODUCED, OR DIVULGED TO UNAUTHORIZED PERSONS WITHOUT THE EXPRESS WRITTEN CONSENT OF BENSHAW INC. IT IS PROVIDED SOLELY FOR THE CONVENIENCE OF THE USER AND SHALL BE RETURNED UPON REQUEST.	MATERIAL: FINISH:	SIZE: D DWG NO.: RX3E05048012KP	REV: 18	
	SCALE: 1:1		SHEET 2 OF 4		
	FINISH:				



REVISIONS DO NOT SCALE DWG	THIRD ANGLE PROJECTION	UNLESS OTHERWISE SPECIFIED ALL DIMENSIONS IN INCHES INTERPRET DRAWING PER ASME Y14.5M-1994 TOLERANCES: .XX ± .03 .XXX ± .015 ANGLES ± 1°	TITLE: CONTROL SCHEMATIC RX3E-050-480-12KP 50HP (65 AMPS) @ 480V (500% CURRENT FOR 30SECONDS, 125% CONTINUOUS DUTY RATED)	SIGNATURES: BDA DATE: 3/2/12	615 ALPHA DRIVE PITTSBURGH, PA. 15238 550 BRIGHT STREET LISTOWEL, ONTARIO M4W 3W5	
	THIS DRAWING AND ALL INFORMATION CONTAINED HEREIN IS THE PROPERTY OF BENSHAW INC. AND MAY NOT BE REPRODUCED, OR DIVULGED TO UNAUTHORIZED PERSONS WITHOUT THE EXPRESS WRITTEN CONSENT OF BENSHAW INC. IT IS PROVIDED SOLELY FOR THE CONVENIENCE OF THE USER AND SHALL BE RETURNED UPON REQUEST.		FINISH:	MFG. JAF DATE: 3/2/12		REV 18
	MATERIAL:		SCALE: 1:1	DWG NO. RX3E05048012KP		SHEET 3 OF 4
	MATERIAL:		SCALE: 1:1	DWG NO. RX3E05048012KP		SHEET 3 OF 4

RX3E05048012KP

A
B
C
D
E
F
G
H
I
J
K
L
M
N



REVISIONS DO NOT SCALE DWG	THIRD ANGLE PROJECTION	UNLESS OTHERWISE SPECIFIED ALL DIMENSIONS IN INCHES INTERPRET DRAWING PER ASME Y14.5M-1994 TOLERANCES: .XX ± .03 .XXX ± .015 ANGLES ± 1°	TITLE: CONTROL SCHEMATIC RX3E-050-480-12KP 50HP (65 AMPS) @ 480V (500% CURRENT FOR 30SECONDS, 125% CONTINUOUS DUTY RATED)	SIGNATURES DRWN: BDA 3/2/12	DATE 3/2/12		
	THIS DRAWING AND ALL INFORMATION CONTAINED HEREIN IS THE PROPERTY OF BENSCHAW INC., AND MAY NOT BE REPRODUCED, OR DIVULGED TO UNAUTHORIZED PERSONS WITHOUT THE EXPRESS WRITTEN CONSENT OF BENSCHAW INC. IT IS PROVIDED SOLELY FOR THE CONVENIENCE OF THE USER AND SHALL BE RETURNED UPON REQUEST.			MFG. JAF 3/2/12	SIZE D	DWG NO. RX3E05048012KP	REV 18
	SCALE: 1:1			SHEET 4 OF 4			
	BENSCHAW 615 ALPHA DRIVE PITTSBURGH, PA. 15238 550 BRIGHT STREET LISTOWEL, ONTARIO N4W 3W5						