

**LEGEND**

- |        |                              |      |                         |
|--------|------------------------------|------|-------------------------|
| CB1:   | CIRCUIT BREAKER              | DIS: | DOOR MOUNTED KEYPAD     |
| GND:   | GROUND LUGS                  | PB1: | START PUSHBUTTON        |
| LVSS:  | RB3 POWER STACK              | PB2: | STOP PUSHBUTTON         |
| CT1-3: | CONTROL CARD CT'S            | PB3: | RESET PUSHBUTTON        |
| BP1:   | ATL/BYPASS CONTACTOR         | SW2: | LDC-OFF-REM SEL. SWITCH |
| D/L1:  | OVERLOAD RELAY               | LT1: | RUNNING PILOT LIGHT     |
| RLY:   | SS-ATL RELAY CARD            |      |                         |
| SW1:   | SS-OFF-ATL SEL. SWITCH (RLY) |      |                         |
| PS1:   | PINSTIP (3 POINT)            |      |                         |
| T1:    | CONTROL POWER TRANSFORMER    |      |                         |
| FU4-5: | PRIMARY FUSING (T1)          |      |                         |
| FU6:   | SECONDARY FUSE (T1)          |      |                         |
| TH1:   | THERMSTAT                    |      |                         |
| TH2:   | SPACE HEATER                 |      |                         |

SECTION C-C  
SCALE 1/4

SECTION A-A  
SCALE 1/4

**NOTES:**

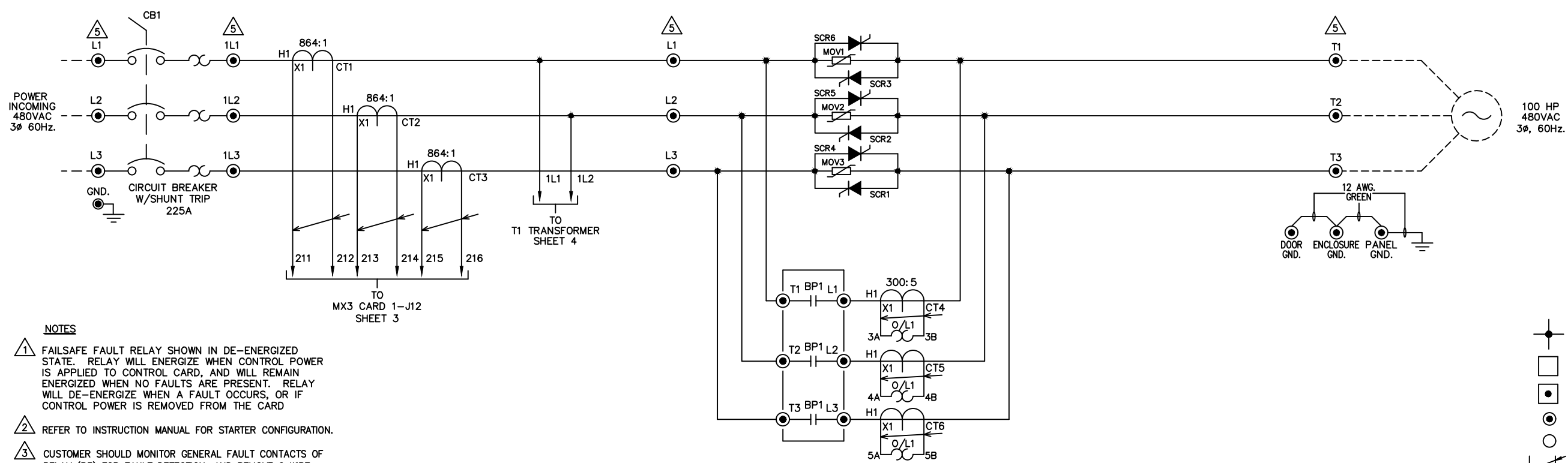
1. MINIMUM WIRE BENDING SPACE SHALL BE 7.00" FROM TOP OF CIRCUIT BREAKER POWER CONNECTION TO TOP OF ENCLOSURE.
2. ENSURE THAT ALL RIBBON CABLES ARE ROUTED AWAY FROM POWER CONDUCTORS.
3. MINIMUM WIRE BENDING SPACE SHALL BE 7.00" FROM BOTTOM OF POWERSTACK POWER CONNECTION TO BOTTOM OF ENCLOSURE.
4. ENCLOSURE LAYOUT IS DESIGNED FOR CABLE ENTRY/EXIT TO BE TOP/BOTTOM.

ECO1085517 APPRD: BDA 4/11/24 CHG BY: RWS 4/11/24 CHANGE CHANGED LEGEND ON SW1 FROM LOCAL-OFF-REMOTE	16 APPRD: BDA 10/1/21 CHG BY: BDA 10/1/21 CHANGE CHANGED CIRCUIT BREAKER AND PILOT DEVICES	15 APPRD: BDA 9/18/18 CHG BY: TR 9/18/18 CHANGE CHANGED TO SWA BREAKER	12 E: 4.1.0.5 APPRD: AS 2/28/13 CHG BY: BDA 2/28/13 CHANGE CHANGED CUSTOMER CONNECTION CARD NUMBER SHEET 3	11 E: 3.9.3.0 APPRD: AS 11/12/12 CHG BY: BDA 11/12/12 CHANGE CHANGED BREAKER TO SENSITON E3796	10 APPRD: JAF 8/14/12 CHG BY: BDA 8/14/12 CHANGE REVISED PER WAVE PROJECT REV TO INITIAL RELEASE	REVISIONS DO NOT SCALE DWG	THIRD ANGLE PROJECTION	UNLESS OTHERWISE SPECIFIED ALL DIMENSIONS IN INCHES INTERPRET DRAWING PER ASME Y14.5M-1994 TOLERANCES: .XX ± .03 .XXX ± .015 ANGLES ± 1°	TITLE: ENCLOSURE LAYOUT RX3E-100-480-3RKP 100HP (124 AMPS) @ 480V (500% CURRENT FOR 30SECONDS, 125% CONTINUOUS DUTY RATED)	SIGNATURES DRWN: BDA 3/2/12 ENG: JAF 3/2/12 MFG:	DATE 3/2/12 3/2/12	615 ALPHA DRIVE PITTSBURGH, PA. 15238 550 BRIGHT STREET LISTOWEL, ONTARIO M4W 3W5	REV 17	
										SIZE D	DWG NO. RX3E1004803RKP			SCALE: 1:4 SHEET 1 OF 4
										MATERIAL:				
										FINISH:				

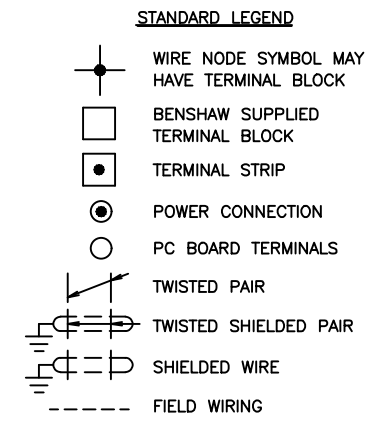
RX3E1004803RKP

BREAKER LUGS ACCEPT  
 WIRE SIZE RANGE: (1) 1/0-4/0AWG TIGHTENING TORQUE: 283.2LB-IN (32Nm)  
 WIRE SIZE RANGE: (1) 250-300KCMIL TIGHTENING TORQUE: 389.4LB-IN (44Nm)

LOAD CONNECTIONS  
 1.25 WIDE BUS TAB WITH 0.52 DIA. HOLE FOR BOLTED CONNECTION.



- NOTES**
1. FAILSAFE FAULT RELAY SHOWN IN DE-ENERGIZED STATE. RELAY WILL ENERGIZE WHEN CONTROL POWER IS APPLIED TO CONTROL CARD, AND WILL REMAIN ENERGIZED WHEN NO FAULTS ARE PRESENT. RELAY WILL DE-ENERGIZE WHEN A FAULT OCCURS, OR IF CONTROL POWER IS REMOVED FROM THE CARD
  2. REFER TO INSTRUCTION MANUAL FOR STARTER CONFIGURATION.
  3. CUSTOMER SHOULD MONITOR GENERAL FAULT CONTACTS OF RELAY (R3) FOR FAULT DETECTION, AND REMOVE 2 WIRE RUN COMMAND WHEN A FAULT IS DETECTED.
  4. TIGHTEN CARD WIRING CONNECTIONS TO 2.7-3.5 in. lbs. (0.3-0.4 N-m).
  5. TIGHTEN POWER LUG FIELD WIRING CONNECTIONS TO CHART 1. SPECIFICATIONS. IF BREAKER IS SUPPLIED ON LINE SIDE OF STACK USE TORQUE VALUES ON BREAKER.
  6. REMOVE JUMPER WHEN INTERLOCKS ARE INSTALLED.
  7. SELECT EITHER TWO OR THREE WIRE CONTROL.
  8. STARTER SHIPPED SETUP FOR CUSTOMER SUPPLIED REMOTE 2 WIRE CONTROL. IF NO CONTROL IS TO BE USED THEN JUMPERS SHOULD REMAIN AS SHOWN.
  9. IF CUSTOMER SUPPLIED REMOTE 3 WIRE CONTROL IS NEEDED MAKE CUSTOMER CONNECTIONS AS SHOWN.
  10. CHANGE P49 (DI2) TO "FR" (FAULT RESET)
  11. SW1-1: (ANALOG INPUT) UP = CURRENT, DOWN = VOLTAGE  
 SW1-2: (ANALOG OUTPUT) UP = VOLTAGE, DOWN = CURRENT
  12. PROGRAM (P78), FUN (03), CT RATIO = 864:1

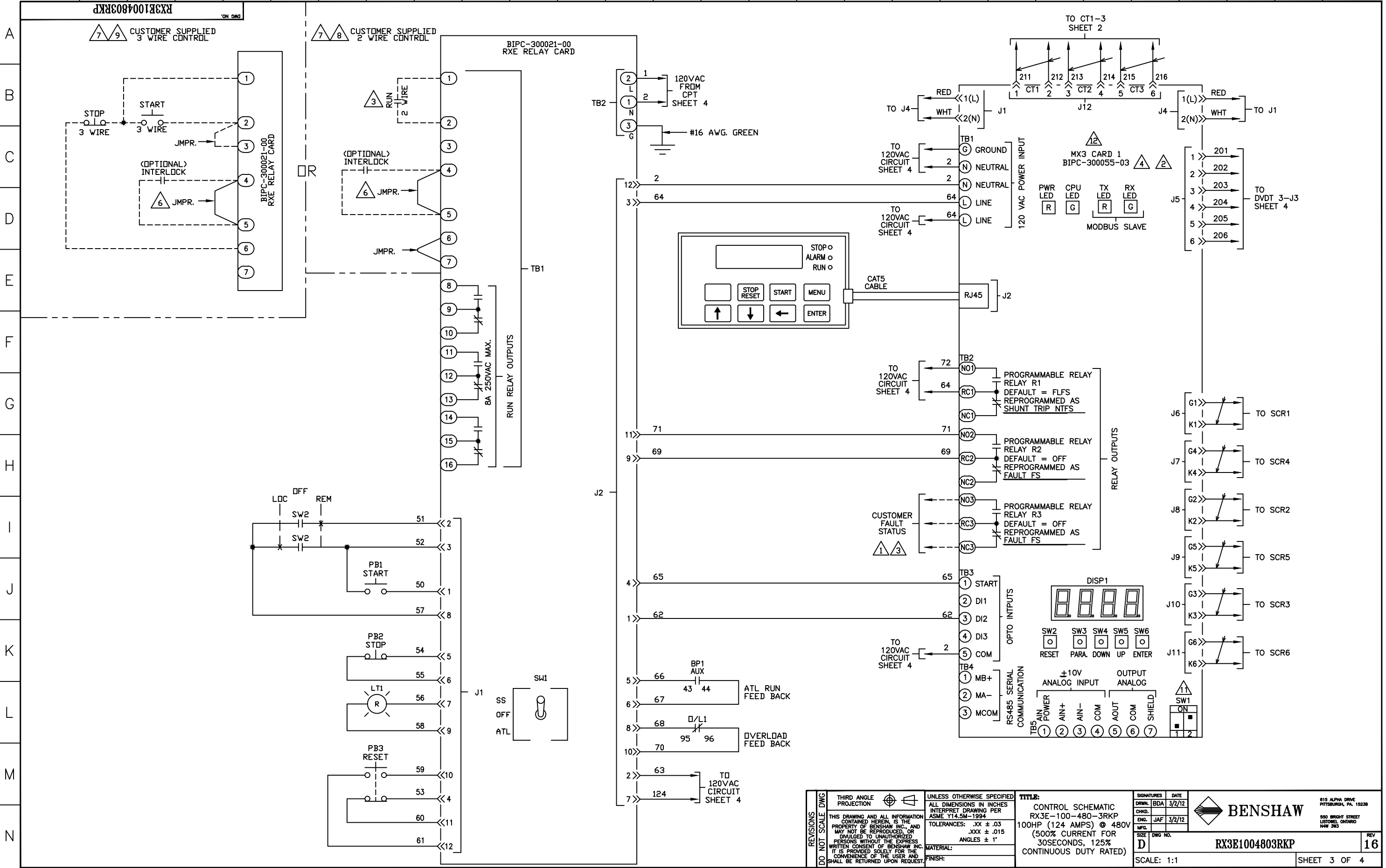


**CHART 1**  
 TIGHTENING TORQUE SPECIFICATIONS FOR HEX HEAD SCREWS

BOLT SIZE	BOLTS - GRADE 5	
	(IN. LB)	(FT. LB)
1/4	96-120	8-10
5/16	180-228	15-19
3/8	300-396	25-33
7/16	480-648	40-54
1/2	720-936	60-78

REVISIONS DO NOT SCALE DWG	THIRD ANGLE PROJECTION	UNLESS OTHERWISE SPECIFIED ALL DIMENSIONS IN INCHES INTERPRET DRAWING PER ASME Y14.5M-1994 TOLERANCES: .XX ± .03 .XXX ± .015 ANGLES ± 1°	TITLE: POWER SCHEMATIC RX3E-100-480-3RKP 100HP (124 AMPS) @ 480V (500% CURRENT FOR 30SECONDS, 125% CONTINUOUS DUTY RATED)	SIGNATURES DRWN: BDA 3/2/12 ENR: JAF 3/2/12 MFD:	DATE 3/2/12	<p>615 ALPHA DRIVE PITTSBURGH, PA. 15238 550 BRIGHT STREET LISTONEL ONTARIO M4W 3W5</p>		
	THIS DRAWING AND ALL INFORMATION CONTAINED HEREIN IS THE PROPERTY OF BENSRAW INC. AND MAY NOT BE REPRODUCED, OR DIVULGED TO UNAUTHORIZED PERSONS WITHOUT THE EXPRESS WRITTEN CONSENT OF BENSRAW INC. IT IS PROVIDED SOLELY FOR THE CONVENIENCE OF THE USER AND SHALL BE RETURNED UPON REQUEST.		MATERIAL:	FINISH:	SIZE D		DWG NO. RX3E1004803RKP	REV 17
	SCALE: 1:1			SHEET 2 OF 4				

1 2 3 4 5 6 7 8 9 10 11 12 13 14 15 16 17 18 19 20 21 22 23 24 25 26 27 28

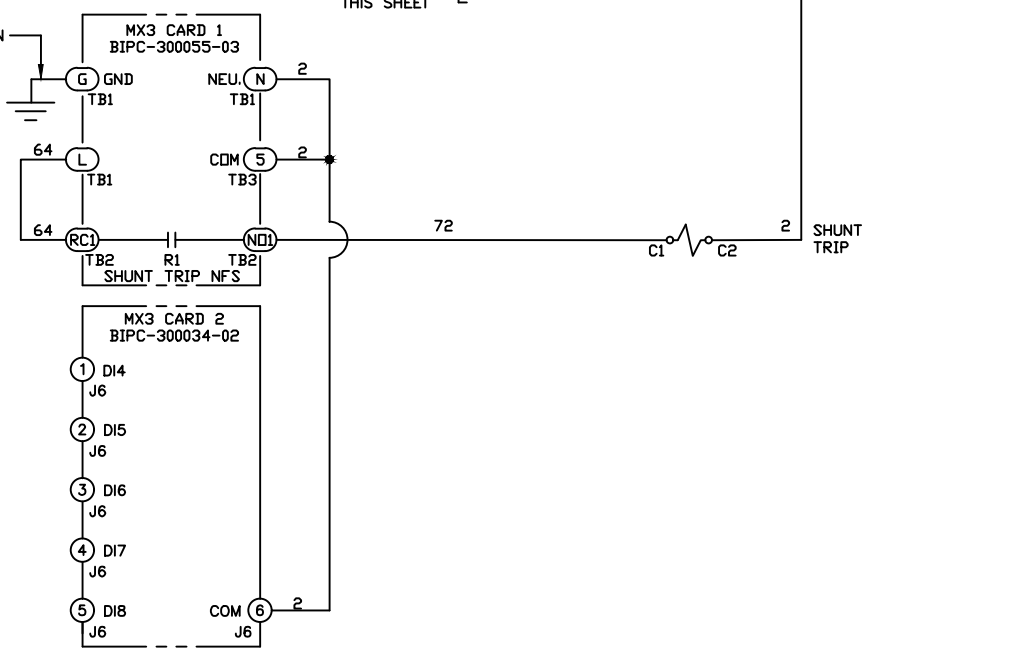
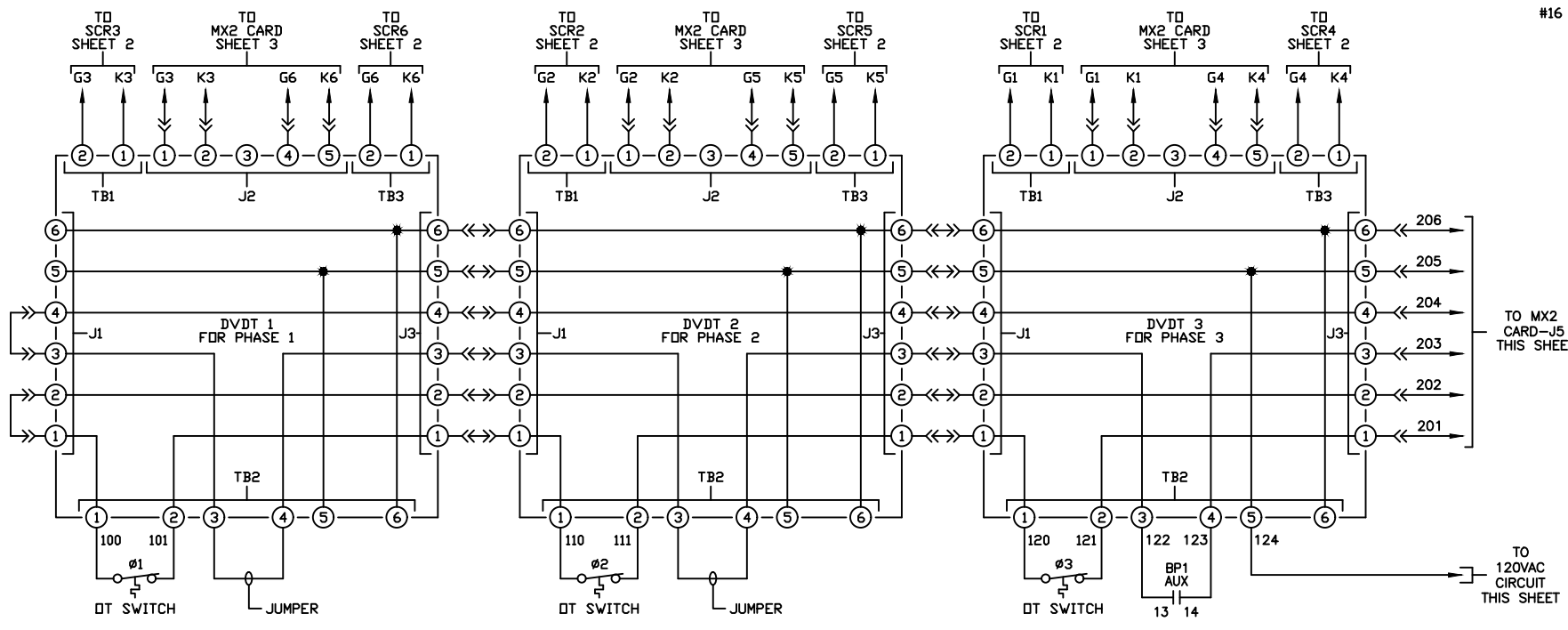
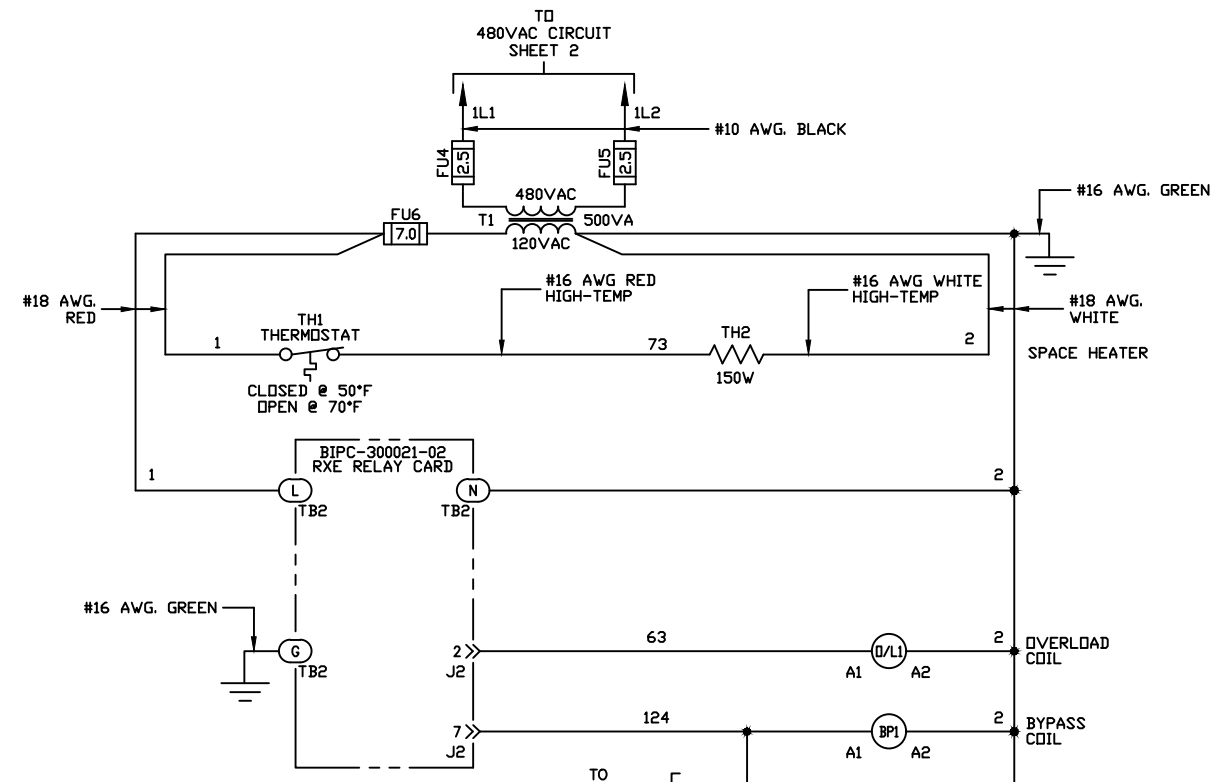
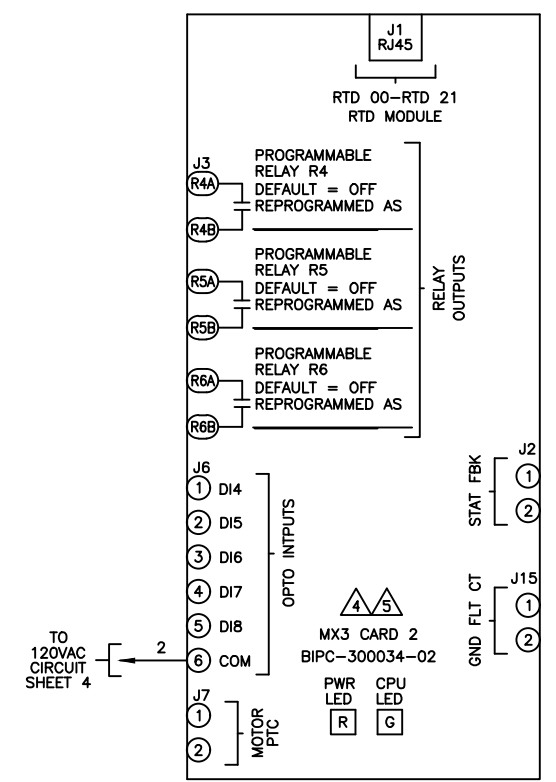
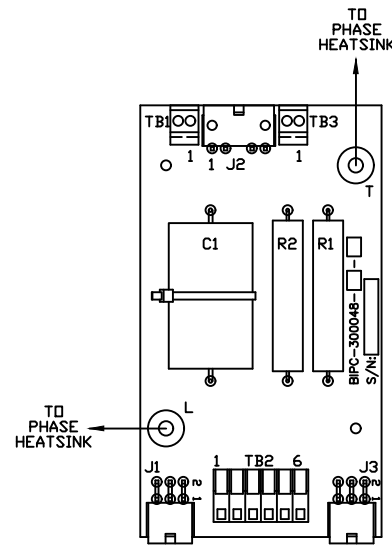


A  
B  
C  
D  
E  
F  
G  
H  
I  
J  
K  
L  
M  
N

REVISIONS DO NOT SCALE DWG	THIRD ANGLE PROJECTION	UNLESS OTHERWISE SPECIFIED ALL DIMENSIONS IN INCHES INTERPRET DRAWING PER ASME Y14.5M-1994 TOLERANCES: .XX ± .03 .XXX ± .015 ANGLES ± 1° MATERIAL: FINISH:	TITLE: CONTROL SCHEMATIC RX3E-100-480-3RKP 100HP (124 AMPS) @ 480V (500% CURRENT FOR 30SECONDS, 125% CONTINUOUS DUTY RATED)	SIGNATURES DRWN: BDA ENGR: JAF MFD: D	DATE 3/2/12 3/2/12	<b>BENSHAW</b> 615 ALPHA DRIVE PITTSBURGH, PA. 15238 550 BRIGHT STREET LISTOWEL, ONTARIO M4W 3W5	REV 16	
	THIS DRAWING AND ALL INFORMATION CONTAINED HEREIN IS THE PROPERTY OF BENSHAW INC. AND MAY NOT BE REPRODUCED, OR DISCLOSED TO UNAUTHORIZED PERSONS WITHOUT THE EXPRESS WRITTEN CONSENT OF BENSHAW INC. IT IS PROVIDED SOLELY FOR THE CONVENIENCE OF THE USER AND SHALL BE RETURNED UPON REQUEST.			SCALE: 1:1	DWG NO. RX3E1004803RKP		SHEET 3 OF 4	

RX3E1004803RKP

A  
B  
C  
D  
E  
F  
G  
H  
I  
J  
K  
L  
M  
N



REVISIONS DO NOT SCALE DWG	THIRD ANGLE PROJECTION	UNLESS OTHERWISE SPECIFIED ALL DIMENSIONS IN INCHES INTERPRET DRAWING PER ASME Y14.5M-1994 TOLERANCES: .XX ± .03 .XXX ± .015 ANGLES ± 1° MATERIAL: FINISH:	TITLE: CONTROL SCHEMATIC RX3E-100-480-3RKP 100HP (124 AMPS) @ 480V (500% CURRENT FOR 30SECONDS, 125% CONTINUOUS DUTY RATED)	SIGNATURES DRWN: BDA ENG: JAF MFG:	DATE 3/2/12 3/2/12	BENSRAW 615 ALPHA DRIVE PITTSBURGH, PA. 15238 550 BRIGHT STREET LISTON, ONTARIO N4W 3W5	RX3E1004803RKP REV 17	
	THIS DRAWING AND ALL INFORMATION CONTAINED HEREIN IS THE PROPERTY OF BENSRAW INC. AND MAY NOT BE REPRODUCED, OR DIVULGED TO UNAUTHORIZED PERSONS WITHOUT THE EXPRESS WRITTEN CONSENT OF BENSRAW INC. IT IS PROVIDED SOLELY FOR THE CONVENIENCE OF THE USER AND SHALL BE RETURNED UPON REQUEST.			SIZE D	DWG NO. 17			
	SCALE: 1:1			SHEET 4 OF 4				