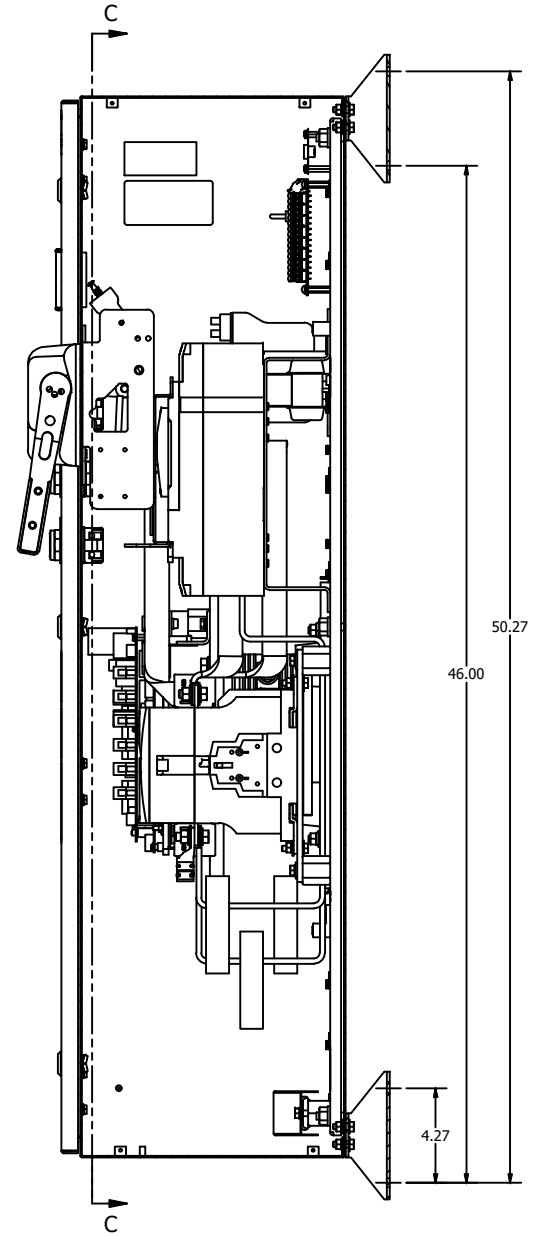
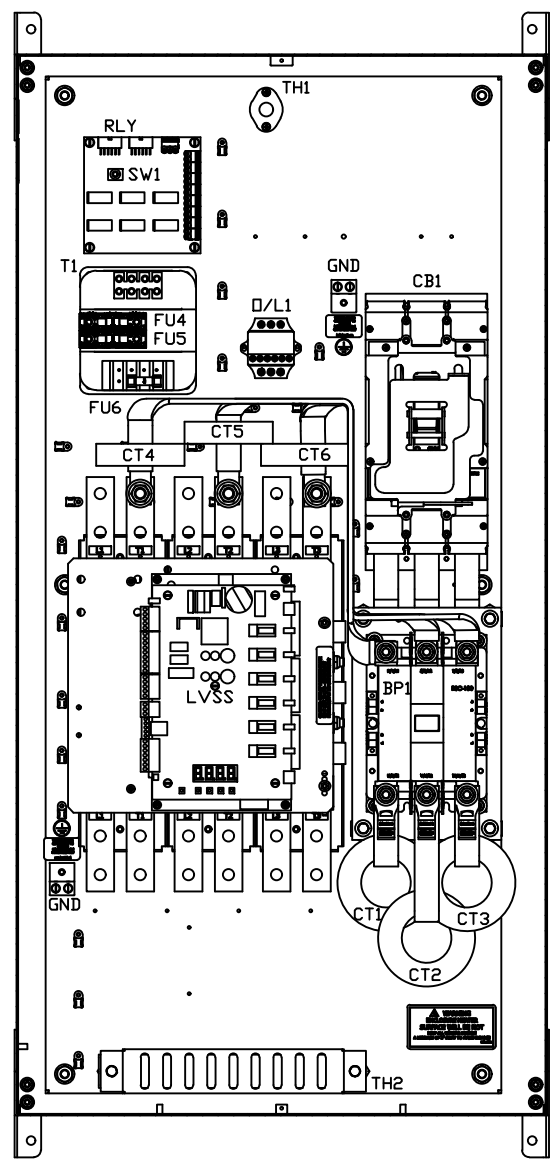
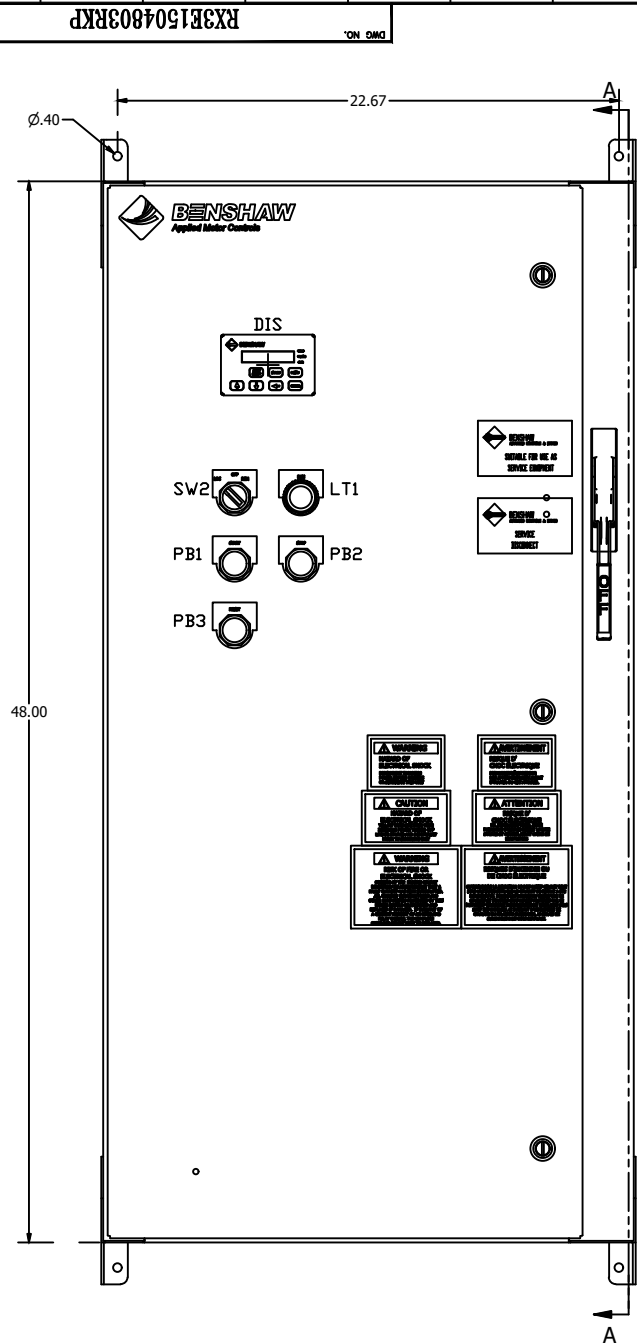


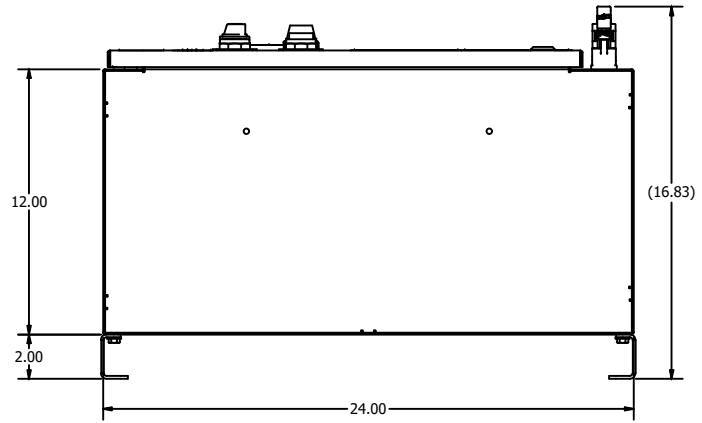
1 2 3 4 5 6 7 8 9 10 11 12 13 14 15 16 17 18 19 20 21 22 23 24 25 26 27 28

A  
B  
C  
D  
E  
F  
G  
H  
I  
J  
K  
L  
M  
N



SECTION C-C  
SCALE 1/4

SECTION A-A  
SCALE 1/4



**LEGEND**

- |                                   |                              |
|-----------------------------------|------------------------------|
| CB1: CIRCUIT BREAKER              | DIS: DOOR MOUNTED KEYPAD     |
| GND: GROUND LUGS                  | PB1: START PUSHBUTTON        |
| LVSS: RB2 POWER STACK             | PB2: STOP PUSHBUTTON         |
| CT1-3: CONTROL CARD CT'S          | PB3: RESET PUSHBUTTON        |
| BP1: ATL/BYPASS CONTACTOR         | SW2: LOC-OFF-REM SEL. SWITCH |
| D/L1: OVERLOAD RELAY              | LT1: RUNNING PILOT LIGHT     |
| RLY: SS-ATL RELAY CARD            |                              |
| SW1: SS-OFF-ATL SEL. SWITCH (RLY) |                              |
| PS1: PINSTRIP (3 POINT)           |                              |
| T1: CONTROL POWER TRANSFORMER     |                              |
| FU4-5: PRIMARY FUSING (T1)        |                              |
| FU6: SECONDARY FUSE (T1)          |                              |
| TH1: THERMOSTAT                   |                              |
| TH2: SPACE HEATER                 |                              |

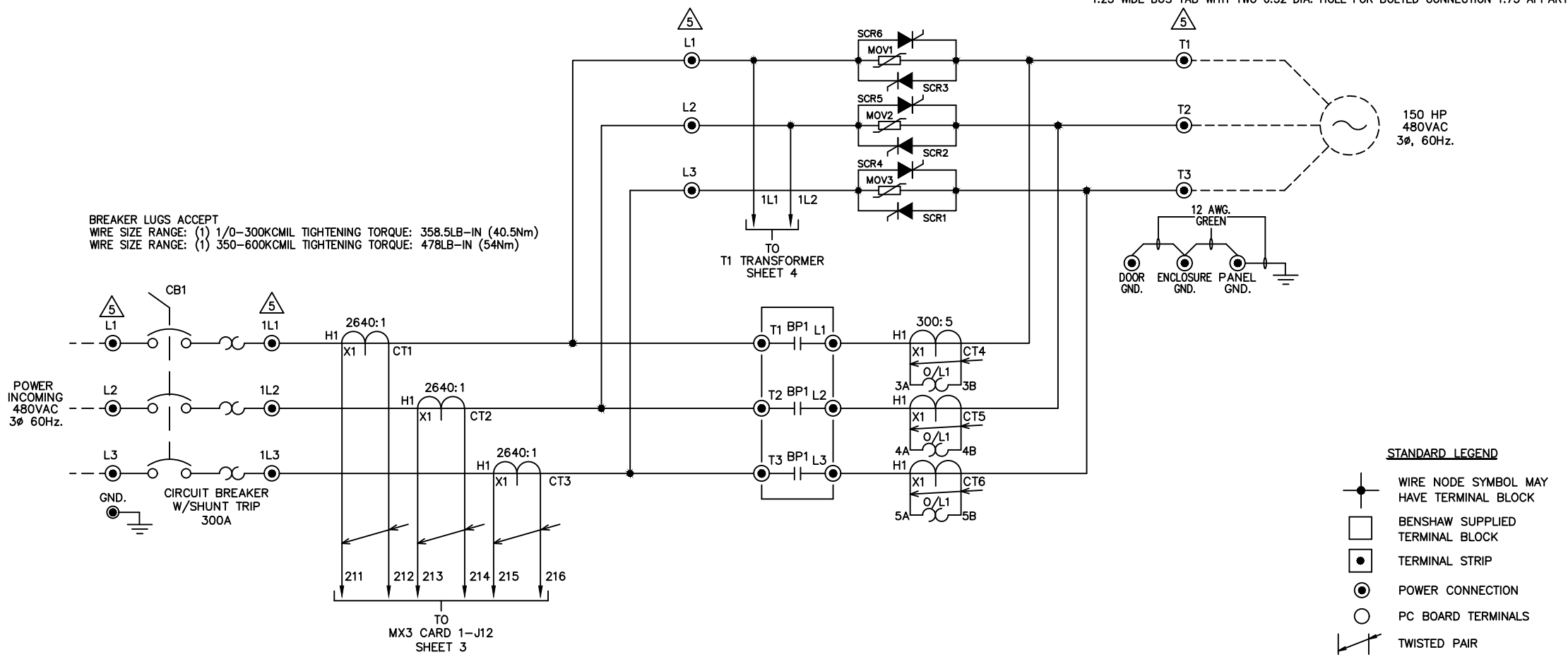
**NOTES:**

- 1 MINIMUM WIRE BENDING SPACE SHALL BE 10.00" FROM TOP OF CIRCUIT BREAKER POWER CONNECTION TO TOP OF ENCLOSURE.
- 2 ENSURE THAT ALL RIBBON CABLES ARE ROUTED AWAY FROM POWER CONDUCTORS.
- 3 MINIMUM WIRE BENDING SPACE SHALL BE 10.00" FROM BOTTOM OF POWERSTACK POWER CONNECTION TO BOTTOM OF ENCLOSURE.
- 4 ENCLOSURE LAYOUT IS DESIGNED FOR CABLE ENTRY/EXIT TO BE TOP/BOTTOM.

ECO10855116 APPRD: BDA 4/11/24 CHG BY: RWS 4/11/21 CHANGE CHANGED SW2 LEGEND TO FROM LOCAL OFF-REMOTE	13 APPRD: BDA 10/1/21 CHG BY: BDA 10/1/21 CHANGE CHANGED CIRCUIT BREAKER AND PILOT DEVICES	14 APPRD: BDA 7/18/18 CHG BY: BDA 7/18/18 CHANGE CHANGED TO 3VA BREAKER	12 E4.1.05 APPRD: AES 2/25/13 CHG BY: BDA 2/25/13 CHANGE CHANGED CUSTOMER CONNECTION CARD NUMBER SHEET 3	11 E39.30 APPRD: AES 11/12/12 CHG BY: BDA 11/12/12 CHANGE CHANGED BREAKER TO SENSATION E3796	10 APPRD: JAF 8/14/12 CHG BY: BDA 8/14/12 CHANGE REVISED PER WAVE PROJECT REV TO INITIAL RELEASE	REVISIONS DO NOT SCALE DWG	THIRD ANGLE PROJECTION	UNLESS OTHERWISE SPECIFIED ALL DIMENSIONS IN INCHES INTERPRET DRAWING PER ASME Y14.5M-1994 TOLERANCES: .XX ± .03 .XXX ± .015 ANGLES ± 1°	<b>TITLE:</b> ENCLOSURE LAYOUT RX3E-150-480-3RKP 150HP (180 AMPS) @ 480V (500% CURRENT FOR 30SECONDS, 125% CONTINUOUS DUTY RATED)	SIGNATURES DRWN: BDA 8/14/12 ENG: JAF 8/14/12 MFG:	DATE 8/14/12 8/14/12	615 ALPHA DRIVE PITTSBURGH, PA. 15238 550 BRIGHT STREET LISTOWEL, ONTARIO M4W 3W5	RX3E1504803RKP REV 16			
										SIZE D	DWG NO.			SCALE: 1:4	SHEET 1 OF 4	
										MATERIAL:				FINISH:		
										THIS DRAWING AND ALL INFORMATION CONTAINED HEREIN IS THE PROPERTY OF BENSHAW INC. AND MAY NOT BE REPRODUCED OR DIVULGED TO UNAUTHORIZED PERSONS WITHOUT THE EXPRESS WRITTEN CONSENT OF BENSHAW INC. IT IS PROVIDED SOLELY FOR THE CONVENIENCE OF THE USER AND SHALL BE RETURNED UPON REQUEST.						

RX3E1504803RKP

LOAD CONNECTIONS  
1.25 WIDE BUS TAB WITH TWO 0.52 DIA. HOLE FOR BOLTED CONNECTION 1.75 APART.



BREAKER LUGS ACCEPT  
WIRE SIZE RANGE: (1) 1/0-300KCMIL TIGHTENING TORQUE: 358.5LB-IN (40.5Nm)  
WIRE SIZE RANGE: (1) 350-600KCMIL TIGHTENING TORQUE: 478LB-IN (54Nm)

POWER INCOMING  
480VAC  
3φ 60HZ.

CIRCUIT BREAKER  
W/SHUNT TRIP  
300A

T1 BP1 L1  
T2 BP1 L2  
T3 BP1 L3

TO  
MX3 CARD 1-J12  
SHEET 3

12 AWG.  
GREEN

150 HP  
480VAC  
3φ, 60Hz.

STANDARD LEGEND

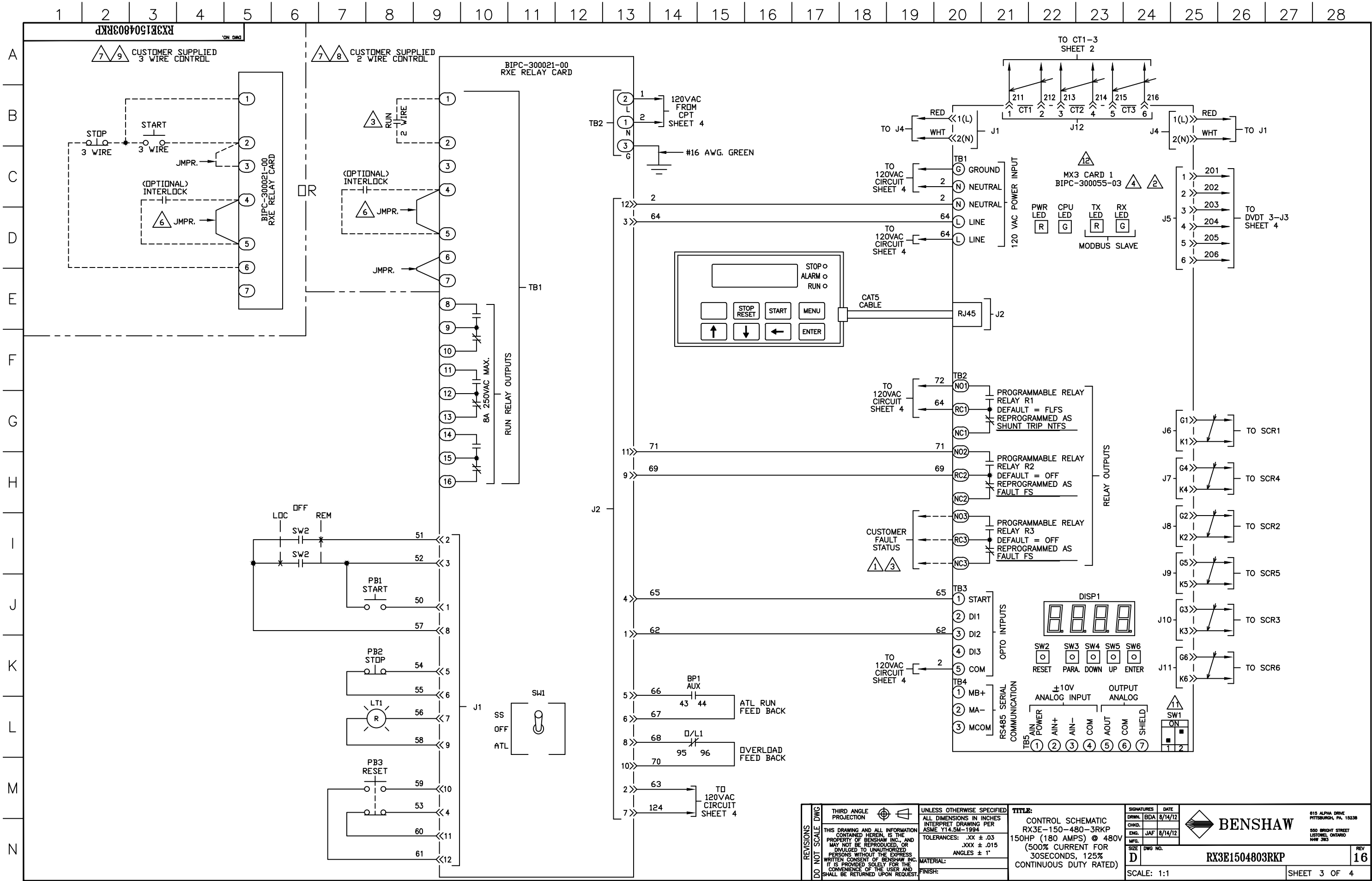
- WIRE NODE SYMBOL MAY HAVE TERMINAL BLOCK
- BENSHAW SUPPLIED TERMINAL BLOCK
- TERMINAL STRIP
- POWER CONNECTION
- PC BOARD TERMINALS
- TWISTED PAIR
- TWISTED SHIELDED PAIR
- SHIELDED WIRE
- FIELD WIRING

- NOTES**
1. FAILSAFE FAULT RELAY SHOWN IN DE-ENERGIZED STATE. RELAY WILL ENERGIZE WHEN CONTROL POWER IS APPLIED TO CONTROL CARD, AND WILL REMAIN ENERGIZED WHEN NO FAULTS ARE PRESENT. RELAY WILL DE-ENERGIZE WHEN A FAULT OCCURS, OR IF CONTROL POWER IS REMOVED FROM THE CARD
  2. REFER TO INSTRUCTION MANUAL FOR STARTER CONFIGURATION.
  3. CUSTOMER SHOULD MONITOR GENERAL FAULT CONTACTS OF RELAY (R3) FOR FAULT DETECTION, AND REMOVE 2 WIRE RUN COMMAND WHEN A FAULT IS DETECTED.
  4. TIGHTEN CARD WIRING CONNECTIONS TO 2.7-3.5 in. lbs. (0.3-0.4 N-m).
  5. TIGHTEN POWER LUG FIELD WIRING CONNECTIONS TO CHART 1. SPECIFICATIONS. IF BREAKER IS SUPPLIED ON LINE SIDE OF STACK USE TORQUE VALUES ON BREAKER.
  6. REMOVE JUMPER WHEN INTERLOCKS ARE INSTALLED.
  7. SELECT EITHER TWO OR THREE WIRE CONTROL.
  8. STARTER SHIPPED SETUP FOR CUSTOMER SUPPLIED REMOTE 2 WIRE CONTROL. IF NO CONTROL IS TO BE USED THEN JUMPERS SHOULD REMAIN AS SHOWN.
  9. IF CUSTOMER SUPPLIED REMOTE 3 WIRE CONTROL IS NEEDED MAKE CUSTOMER
  10. CONNECTIONS AS SHOWN. CHANGE P49 (DI2) TO "FR" (FAULT RESET)
  11. SW1-1: (ANALOG INPUT) UP = CURRENT, DOWN = VOLTAGE  
SW1-2: (ANALOG OUTPUT) UP = VOLTAGE, DOWN = CURRENT
  12. PROGRAM (P78), FUN (03), CT RATIO = 2640:1

CHART 1

TIGHTENING TORQUE SPECIFICATIONS FOR HEX HEAD SCREWS		
BOLT SIZE	BOLTS - GRADE 5	
SAE	(IN. LB)	(FT. LB)
1/4	96-120	8-10
5/16	180-228	15-19
3/8	300-396	25-33
7/16	480-648	40-54
1/2	720-936	60-78

REVISIONS DO NOT SCALE DWG	THIRD ANGLE PROJECTION	UNLESS OTHERWISE SPECIFIED ALL DIMENSIONS IN INCHES INTERPRET DRAWING PER ASME Y14.5M-1994 TOLERANCES: .XX ± .03 .XXX ± .015 ANGLES ± 1° MATERIAL: FINISH:	TITLE: POWER SCHEMATIC RX3E-150-480-3RKP 150HP (180 AMPS) @ 480V (500% CURRENT FOR 30SECONDS, 125% CONTINUOUS DUTY RATED)	SIGNATURES DRWN: BDA 8/14/12 ENR: JAF 8/14/12 MFG:	DATE	<p>615 ALPHA DRIVE PITTSBURGH, PA. 15238 550 BRIGHT STREET LISTOWEL, ONTARIO M4W 3W5</p>
	THIS DRAWING AND ALL INFORMATION CONTAINED HEREIN IS THE PROPERTY OF BENSCHAW INC., AND MAY NOT BE REPRODUCED, OR DIVULGED TO UNAUTHORIZED PERSONS WITHOUT THE EXPRESS WRITTEN CONSENT OF BENSCHAW INC. IT IS PROVIDED SOLELY FOR THE CONVENIENCE OF THE USER AND SHALL BE RETURNED UPON REQUEST.		SCALE: 1:1	SIZE: D DWG NO. RX3E1504803RKP	REV: 16	
	SHEET 2 OF 4					

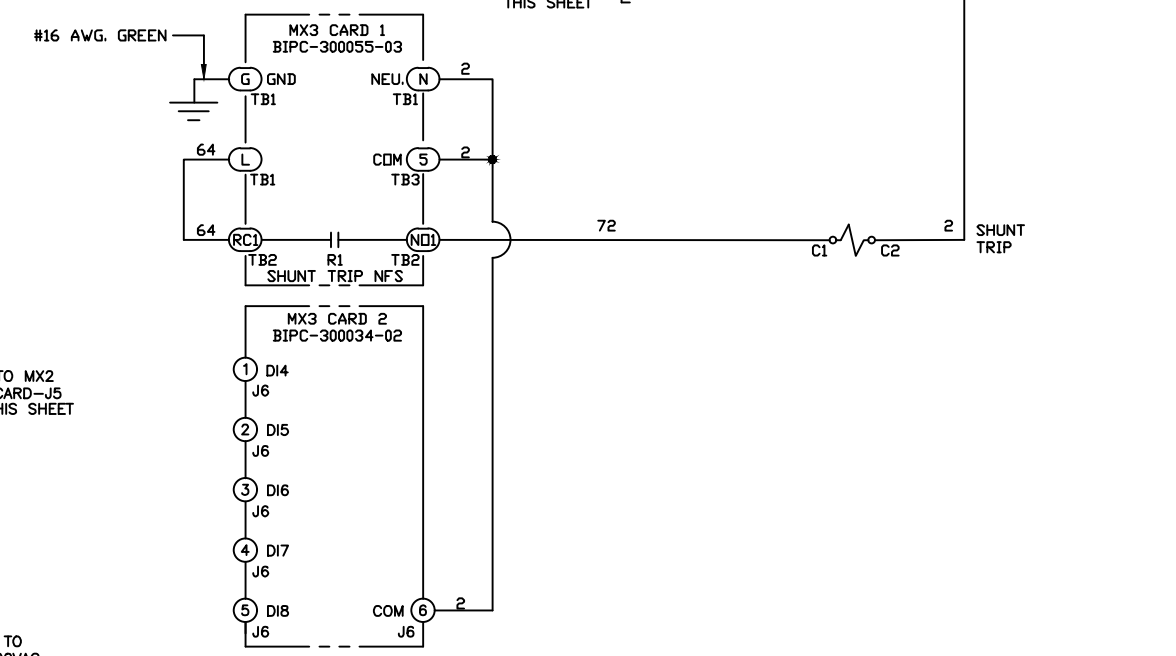
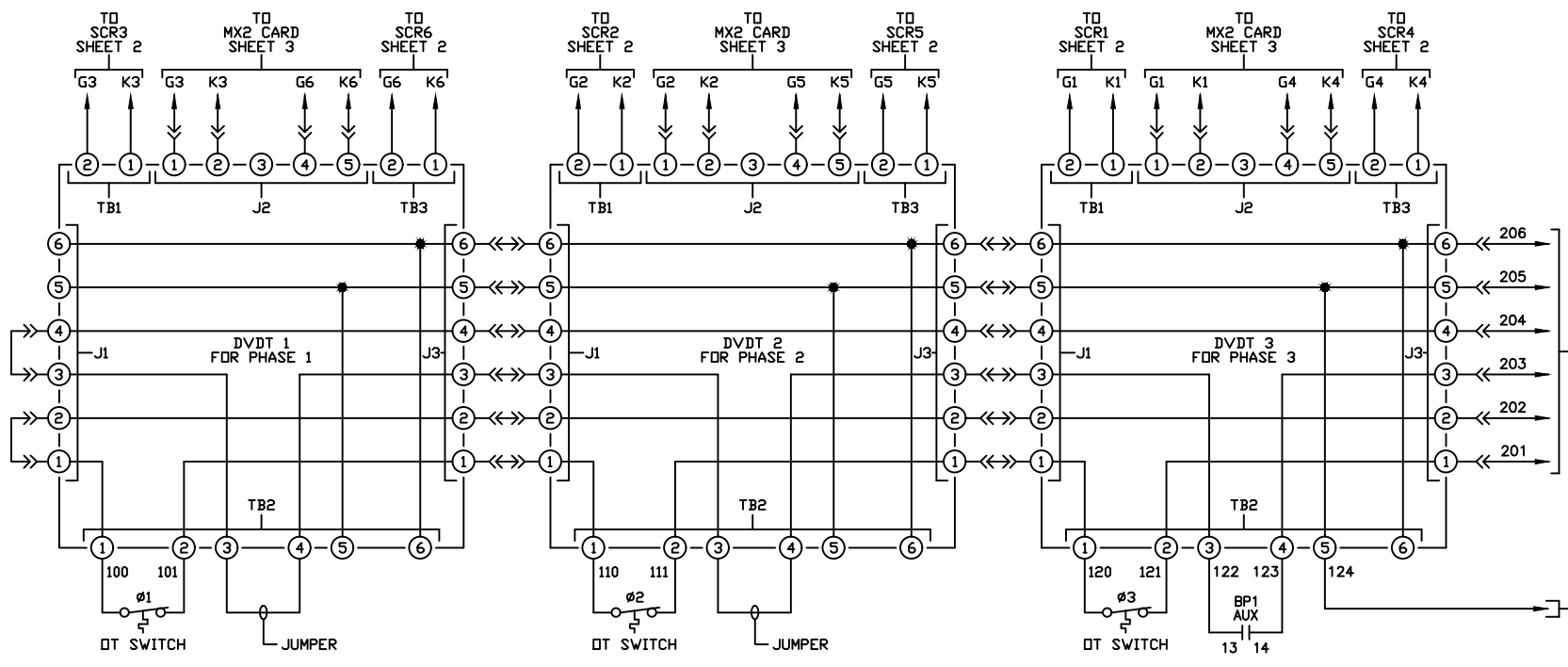
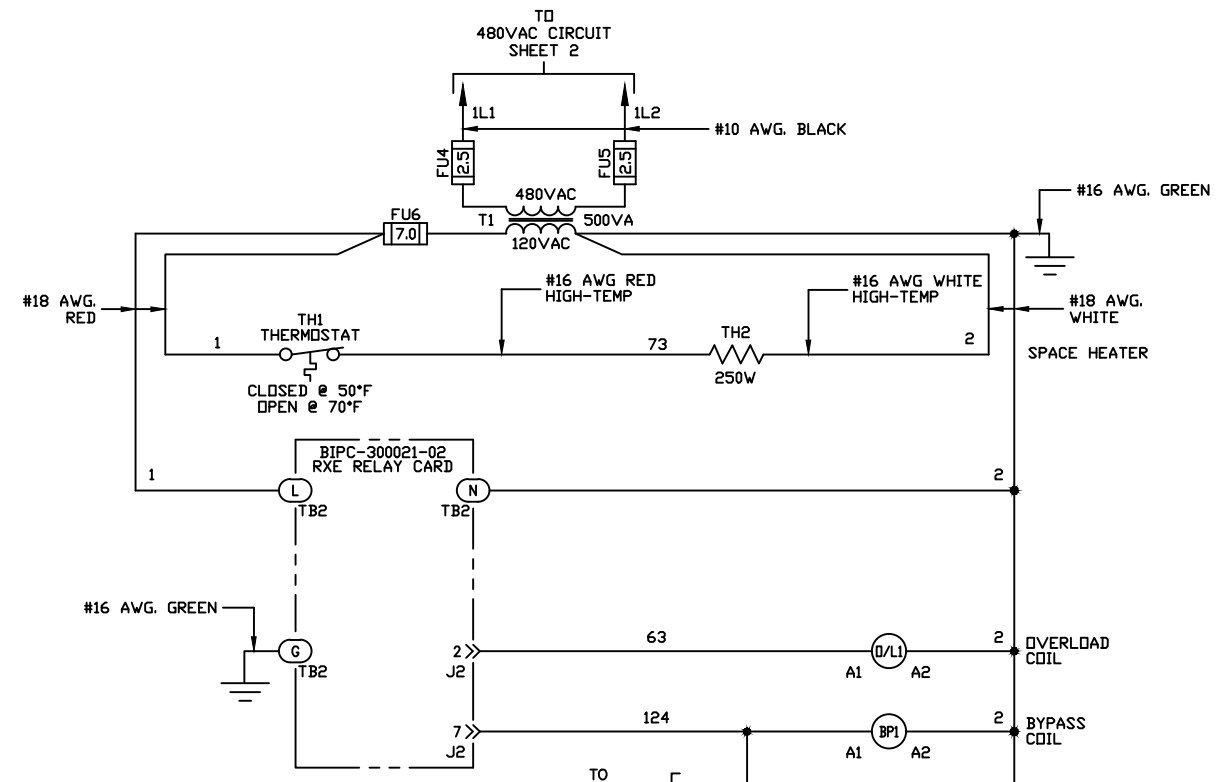
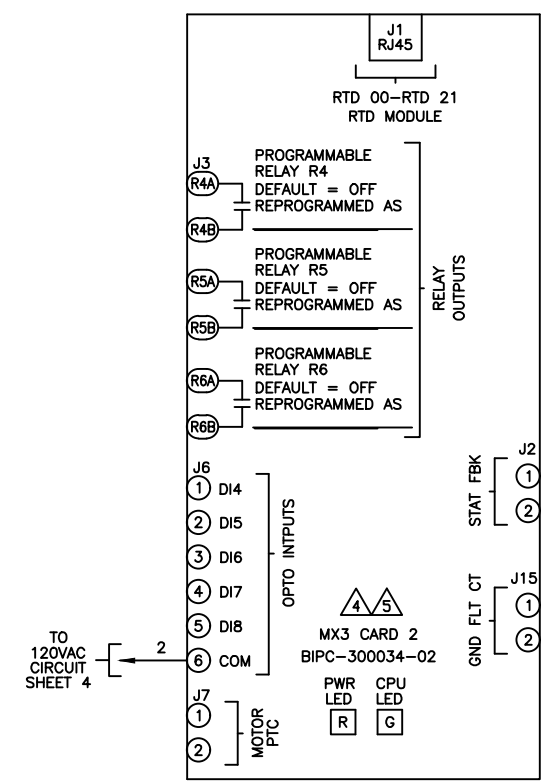
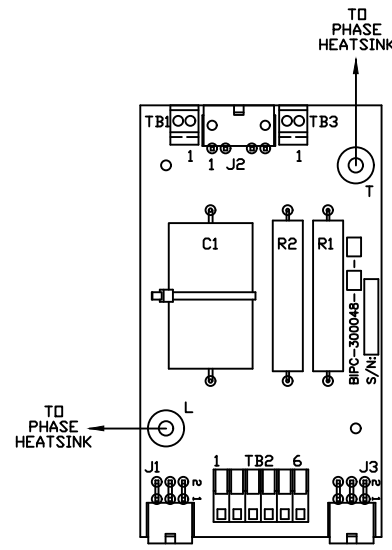


<b>REVISIONS</b> DO NOT SCALE DWG	THIRD ANGLE PROJECTION	UNLESS OTHERWISE SPECIFIED ALL DIMENSIONS IN INCHES INTERPRET DRAWING PER ASME Y14.5M-1994 TOLERANCES: .XX ± .03 .XXX ± .015 ANGLES ± 1°	<b>TITLE:</b> CONTROL SCHEMATIC RX3E-150-480-3RKP 150HP (180 AMPS) @ 480V (500% CURRENT FOR 30SECONDS, 125% CONTINUOUS DUTY RATED)	DRWN: BDA 8/14/12	DATE: 8/14/12	
	THIS DRAWING AND ALL INFORMATION CONTAINED HEREIN IS THE PROPERTY OF BENSCHAW INC. AND MAY NOT BE REPRODUCED OR DIVULGED TO UNAUTHORIZED PERSONS WITHOUT THE EXPRESS WRITTEN CONSENT OF BENSCHAW INC. IT IS PROVIDED SOLELY FOR THE CONVENIENCE OF THE USER AND SHALL BE RETURNED UPON REQUEST.			ENG: JAF 8/14/12	MFG:	SIG:
	MATERIAL:			FINISH:	DWG NO.	REV
	SCALE: 1:1			SHEET 3 OF 4	RX3E1504803RKP	16



RX3E1504803RKP

ON DMS



REVISIONS DO NOT SCALE DWG	THIRD ANGLE PROJECTION	UNLESS OTHERWISE SPECIFIED ALL DIMENSIONS IN INCHES INTERPRET DRAWING PER ASME Y14.5M-1994 TOLERANCES: .XX ± .03 .XXX ± .015 ANGLES ± 1°	TITLE: CONTROL SCHEMATIC RX3E-150-480-3RKP 150HP (180 AMPS) @ 480V (500% CURRENT FOR 30SECONDS, 125% CONTINUOUS DUTY RATED)	SIGNATURES DRWN: BDA ENG: JAF MFG:	DATE 8/14/12 8/14/12	BENSCHAW 615 ALPHA DRIVE PITTSBURGH, PA. 15238 550 BRIGHT STREET LISTON, ONTARIO M4W 3W5	RX3E1504803RKP	REV 16
	THIS DRAWING AND ALL INFORMATION CONTAINED HEREIN IS THE PROPERTY OF BENSCHAW INC. AND MAY NOT BE REPRODUCED, OR DIVULGED TO UNAUTHORIZED PERSONS WITHOUT THE EXPRESS WRITTEN CONSENT OF BENSCHAW INC. IT IS PROVIDED SOLELY FOR THE CONVENIENCE OF THE USER AND SHALL BE RETURNED UPON REQUEST.		MATERIAL: FINISH:	SIZE D	DWG NO.			
	SCALE: 1:1		SHEET 4 OF 4					
	TO MX2 CARD -J5 THIS SHEET		TO 120VAC CIRCUIT THIS SHEET					