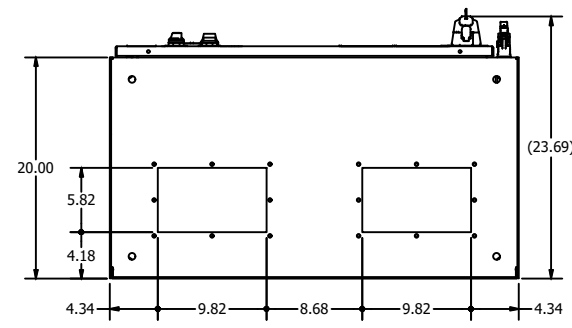
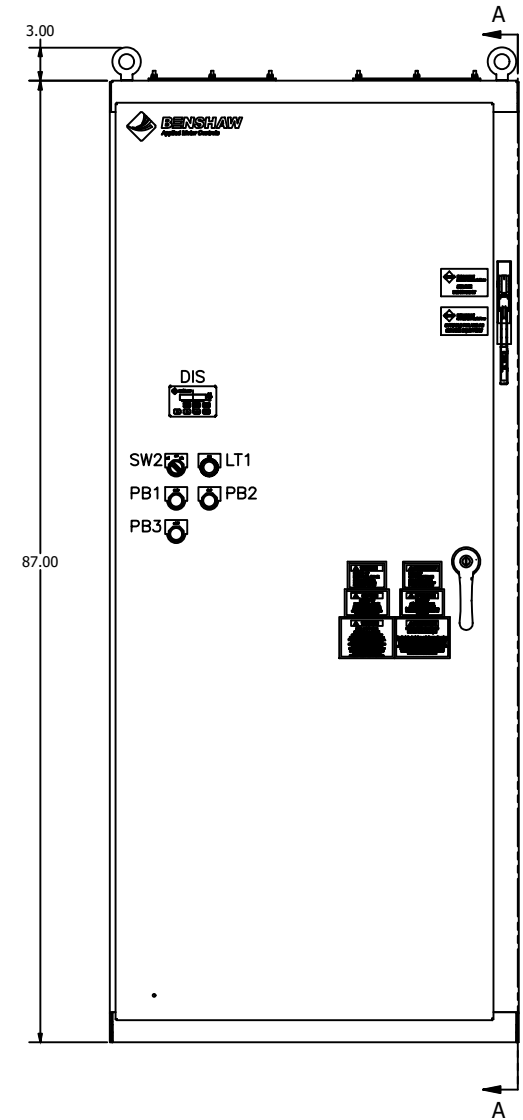
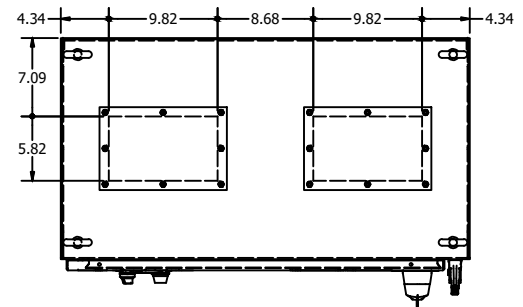


1 2 3 4 5 6 7 8 9 10 11 12 13 14 15 16 17 18 19 20 21 22 23 24 25 26 27 28

A
B
C
D
E
F
G
H
I
J
K
L
M
N

RX3E5004803RKP

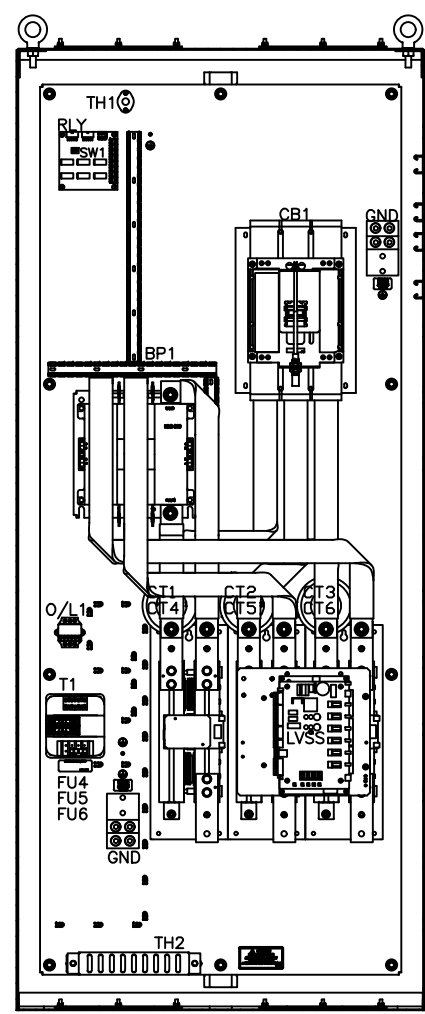


LEGEND

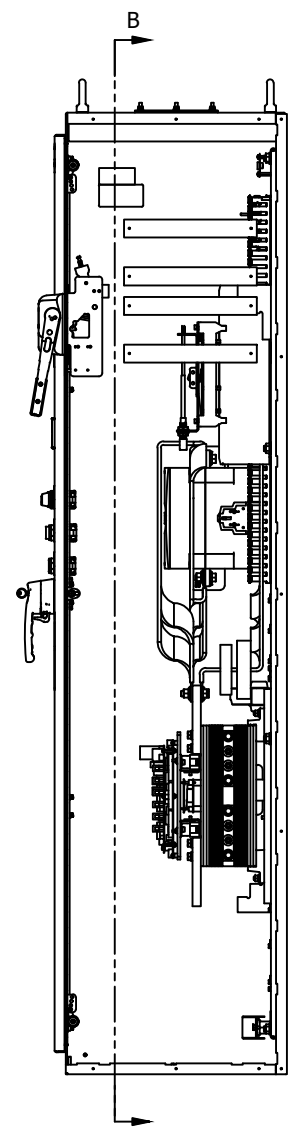
- CB1: CIRCUIT BREAKER
- GND: GROUND LUGS
- LVSS: RB3 POWER STACK
- CT1-3: CONTROL CARD CT'S
- BP1: ATL/BYPASS CONTACTOR
- O/L1: OVERLOAD RELAY
- RLY: SS-ATL RELAY CARD
- SW1: SS-OFF-ATL SEL. SWITCH (RLY)
- PS1: PINSTRIP (3 POINT)
- T1: CONTROL POWER TRANSFORMER
- FU4-5: PRIMARY FUSING (T1)
- FU6: SECONDARY FUSE (T1)
- TH1: THERMOSTAT
- TH2: SPACE HEATER
- DIS: DOOR MOUNTED KEYPAD
- PB1: START PUSHBUTTON
- PB2: STOP PUSHBUTTON
- PB3: RESET PUSHBUTTON
- SW2: LOC-OFF-REM SEL. SWITCH
- LT1: RUNNING PILOT LIGHT

NOTES:

- 1 MINIMUM WIRE BENDING SPACE SHALL BE 15.00" FROM TOP OF CIRCUIT BREAKER POWER CONNECTION TO TOP OF ENCLOSURE.
- 2 ENSURE THAT ALL RIBBON CABLES ARE ROUTED AWAY FROM POWER CONDUCTORS.
- 3 MINIMUM WIRE BENDING SPACE SHALL BE 15.00" FROM BOTTOM OF POWERSTACK POWER CONNECTION TO BOTTOM OF ENCLOSURE.
- 4 ENCLOSURE LAYOUT IS DESIGNED FOR CABLE ENTRY/EXIT TO BE TOP/BOTTOM.



SECTION B-B
SCALE 1 / 8

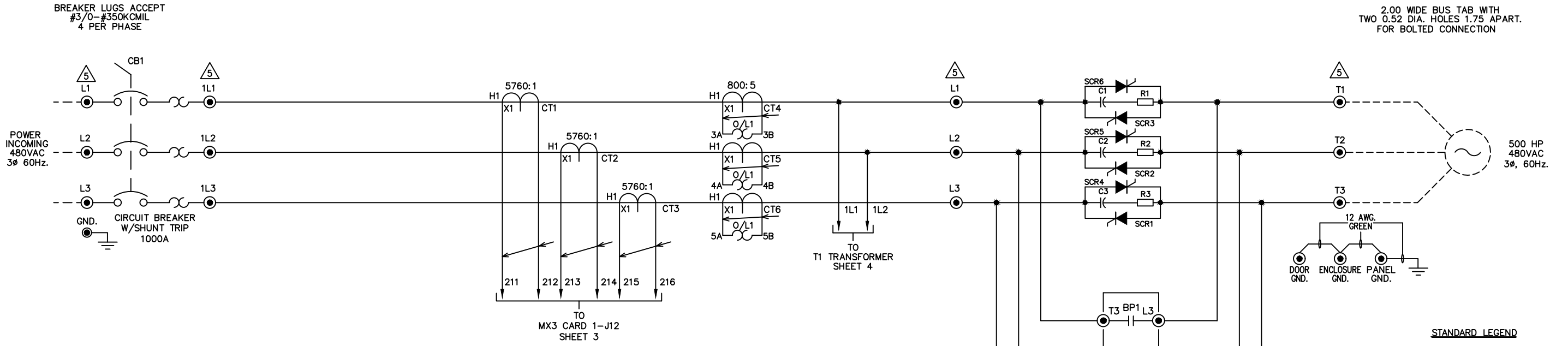


SECTION A-A
SCALE 1 / 8

17	APPRD: BDA 9/28/21 CHG BY: BDA 9/28/21 CIRCUIT BREAKER AND PILOT DEVICES
14	APPRD: BDA 3/30/17 CHG BY: BDA 3/30/17 CHANGE ADD AUX CONTACT IN FRONT OF 6PT RELAY
13	ECCO: E4187 APPRD: JAF 4/18/13 CHG BY: JBP 4/18/13 CHANGE REMOVED CHASSIS L SIDE BUS BAR
12	E4105 APPRD: AS 2/25/13 CHG BY: BDA 2/25/13 CHANGE CHANGED CUSTOMER CONNECTION CARD NUMBER SHEET 3
11	E3796 APPRD: AS 11/12/12 CHG BY: BDA 11/12/12 CHANGE CHANGED BREAKER TO SENSIRON
10	APPRD: JAF 8/14/12 CHG BY: BDA 8/14/12 CHANGE REVISED PER WAVE PROJECT. REV TO INITIAL RELEASE
<p>REVISIONS DO NOT SCALE DWG</p>	
<p>THIRD ANGLE PROJECTION</p>	
<p>UNLESS OTHERWISE SPECIFIED ALL DIMENSIONS IN INCHES INTERPRET DRAWING PER ASME Y14.5M-1994 TOLERANCES: .XX ± .03 .XXX ± .015 ANGLES ± 1°</p>	
<p>THIS DRAWING AND ALL INFORMATION CONTAINED HEREIN IS THE PROPERTY OF BENSCHAW INC. AND MAY NOT BE REPRODUCED OR DIVULGED TO UNAUTHORIZED PERSONS WITHOUT THE EXPRESS WRITTEN CONSENT OF BENSCHAW INC. IT IS PROVIDED SOLELY FOR THE CONVENIENCE OF THE USER AND SHALL BE RETURNED UPON REQUEST.</p>	
<p>TITLE: ENCLOSURE LAYOUT RX3E-500-480-3RKP 500HP (590 AMPS) @ 480V (500% CURRENT FOR 30SECONDS, 125% CONTINUOUS DUTY RATED)</p>	
<p>SIGNATURES DATE DRWN: BDA 8/14/12 ENGR: JAF 8/14/12 MFD: SIZE DWG NO. D</p>	
<p>BENSCHAW 615 ALPHA DRIVE PITTSBURGH, PA. 15238 550 BRIGHT STREET LISTWELL ONTARIO M4W 3H5</p>	
<p>ECO: 10855 16 APPRD: BDA 4/11/24 CHG BY: RMS 4/11/21 CHANGE: CHANGED SW2 LEGEND TO LOC-OFF-REM FROM LOCAL-OFF-REMOTE</p>	
<p>SCALE: 1:8 SHEET 1 OF 4 REV 18</p>	

RX3E5004803RKP

2.00 WIDE BUS TAB WITH TWO 0.52 DIA. HOLES 1.75 APART FOR BOLTED CONNECTION



- NOTES**
1. FAILSAFE FAULT RELAY SHOWN IN DE-ENERGIZED STATE. RELAY WILL ENERGIZE WHEN CONTROL POWER IS APPLIED TO CONTROL CARD, AND WILL REMAIN ENERGIZED WHEN NO FAULTS ARE PRESENT. RELAY WILL DE-ENERGIZE WHEN A FAULT OCCURS, OR IF CONTROL POWER IS REMOVED FROM THE CARD
 2. REFER TO INSTRUCTION MANUAL FOR STARTER CONFIGURATION.
 3. CUSTOMER SHOULD MONITOR GENERAL FAULT CONTACTS OF RELAY (R3) FOR FAULT DETECTION, AND REMOVE 2 WIRE RUN COMMAND WHEN A FAULT IS DETECTED.
 4. TIGHTEN CARD WIRING CONNECTIONS TO 2.7-3.5 in. lbs. (0.3-0.4 N-m).
 5. TIGHTEN POWER LUG FIELD WIRING CONNECTIONS TO CHART 1. SPECIFICATIONS. IF BREAKER IS SUPPLIED ON LINE SIDE OF STACK USE TORQUE VALUES ON BREAKER.
 6. REMOVE JUMPER WHEN INTERLOCKS ARE INSTALLED.
 7. SELECT EITHER TWO OR THREE WIRE CONTROL.
 8. STARTER SHIPPED SETUP FOR CUSTOMER SUPPLIED REMOTE 2 WIRE CONTROL. IF NO CONTROL IS TO BE USED THEN JUMPERS SHOULD REMAIN AS SHOWN.
 9. IF CUSTOMER SUPPLIED REMOTE 3 WIRE CONTROL IS NEEDED MAKE CUSTOMER CONNECTIONS AS SHOWN.
 10. CHANGE P49 (DI2) TO "FR" (FAULT RESET)
 11. SW1-1: (ANALOG INPUT) UP = CURRENT, DOWN = VOLTAGE
SW1-2: (ANALOG OUTPUT) UP = VOLTAGE, DOWN = CURRENT
 12. PROGRAM (P78), FUN (03), CT RATIO = 5760:1

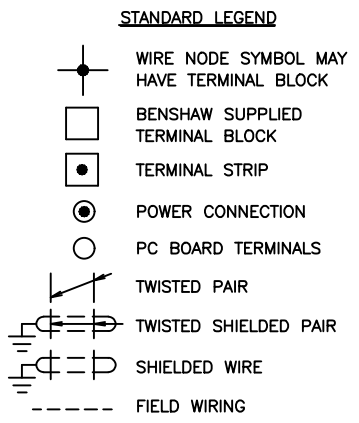
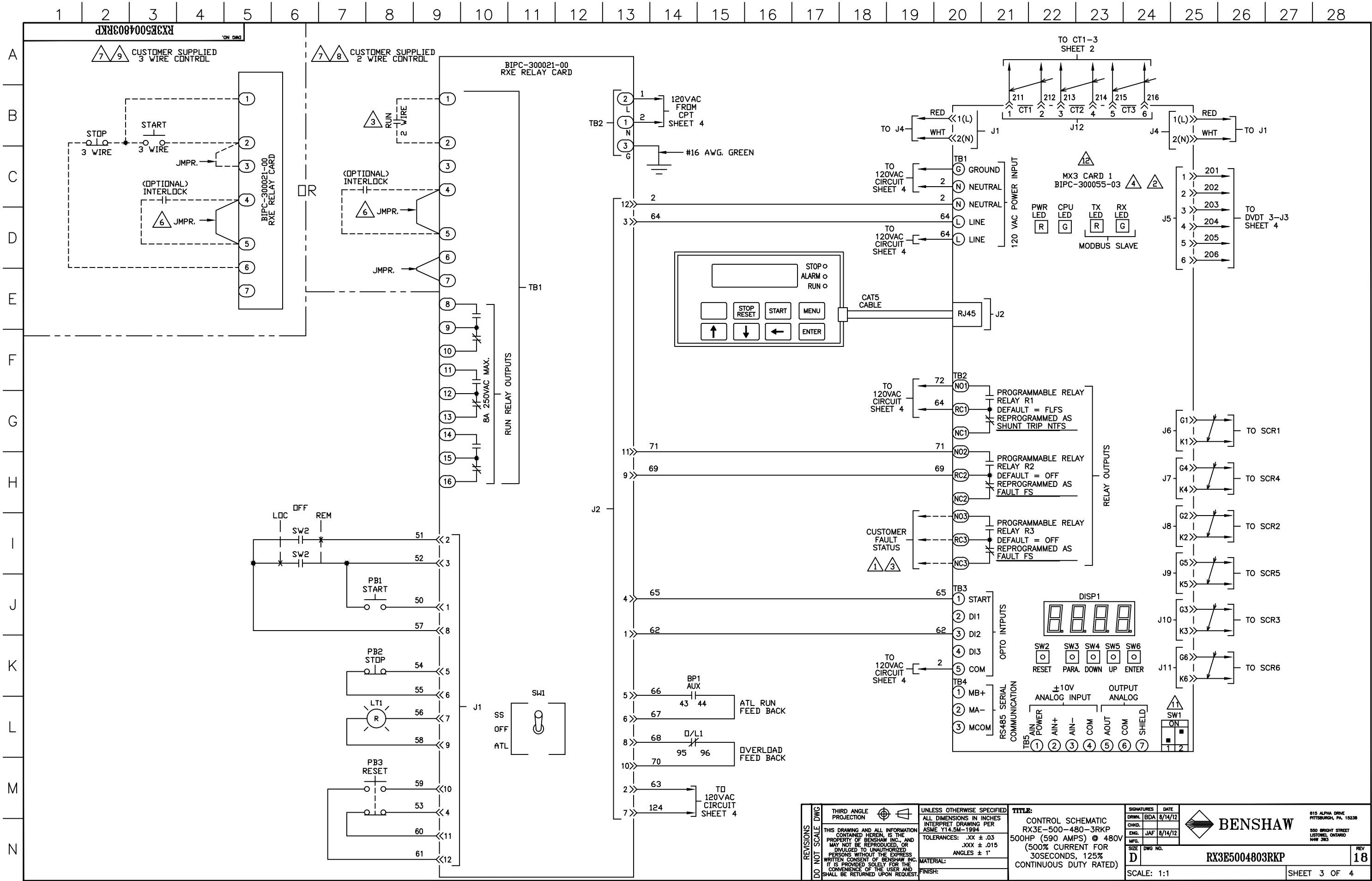


CHART 1
TIGHTENING TORQUE SPECIFICATIONS FOR HEX HEAD SCREWS

BOLT SIZE	BOLTS - GRADE 5	
	(IN. LB)	(FT. LB)
1/4	96-120	8-10
5/16	180-228	15-19
3/8	300-396	25-33
7/16	480-648	40-54
1/2	720-936	60-78

REVISIONS DO NOT SCALE DWG	THIRD ANGLE PROJECTION	UNLESS OTHERWISE SPECIFIED ALL DIMENSIONS IN INCHES INTERPRET DRAWING PER ASME Y14.5M-1994	TITLE: POWER SCHEMATIC RX3E-500-480-3RKP 500HP (590 AMPS) @ 480V (500% CURRENT FOR 30SECONDS, 125% CONTINUOUS DUTY RATED)	SIGNATURES DATE DRWN: BDA 8/14/12 ENG: JAF 8/14/12 MFD:	815 ALPHA DRIVE PITTSBURGH, PA. 15238 550 BRIGHT STREET LISTOWEL, ONTARIO M4W 3W5
	THIS DRAWING AND ALL INFORMATION CONTAINED HEREIN IS THE PROPERTY OF BENSHAW INC. AND MAY NOT BE REPRODUCED, OR DIVULGED TO UNAUTHORIZED PERSONS WITHOUT THE EXPRESS WRITTEN CONSENT OF BENSHAW INC. IT IS PROVIDED SOLELY FOR THE CONVENIENCE OF THE USER AND SHALL BE RETURNED UPON REQUEST.	TOLERANCES: .XX ± .03 .XXX ± .015 ANGLES ± 1°	MATERIAL: FINISH:	SIZE DWG NO. D	REV 18
	SCALE: 1:1			SHEET 2 OF 4	
	BENS HAW			RX3E5004803RKP	



REVISIONS DO NOT SCALE DWG	THIRD ANGLE PROJECTION	UNLESS OTHERWISE SPECIFIED ALL DIMENSIONS IN INCHES INTERPRET DRAWING PER ASME Y14.5M-1994 TOLERANCES: .XX ± .03 .XXX ± .015 ANGLES ± 1°	TITLE: CONTROL SCHEMATIC RX3E-500-480-3RKP 500HP (590 AMPS) @ 480V (500% CURRENT FOR 30SECONDS, 125% CONTINUOUS DUTY RATED)	DRWN: BDA 8/14/12	DATE: 8/14/12		
	THIS DRAWING AND ALL INFORMATION CONTAINED HEREIN IS THE PROPERTY OF BENSCHAW INC. AND MAY NOT BE REPRODUCED OR DIVULGED TO UNAUTHORIZED PERSONS WITHOUT THE EXPRESS WRITTEN CONSENT OF BENSCHAW INC. IT IS PROVIDED SOLELY FOR THE CONVENIENCE OF THE USER AND SHALL BE RETURNED UPON REQUEST.			ENGR: JAF 8/14/12	MFG:	SIGNATURES:	DATE:
	MATERIAL:			FINISH:	SIZE: D	DWG NO.:	REV:
	SCALE: 1:1			SHEET 3 OF 4			

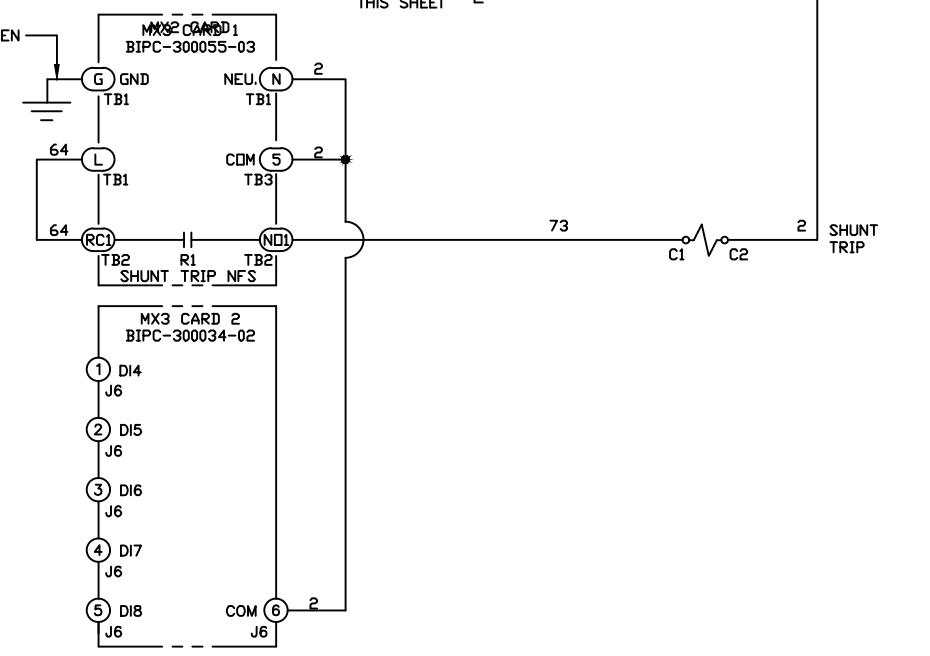
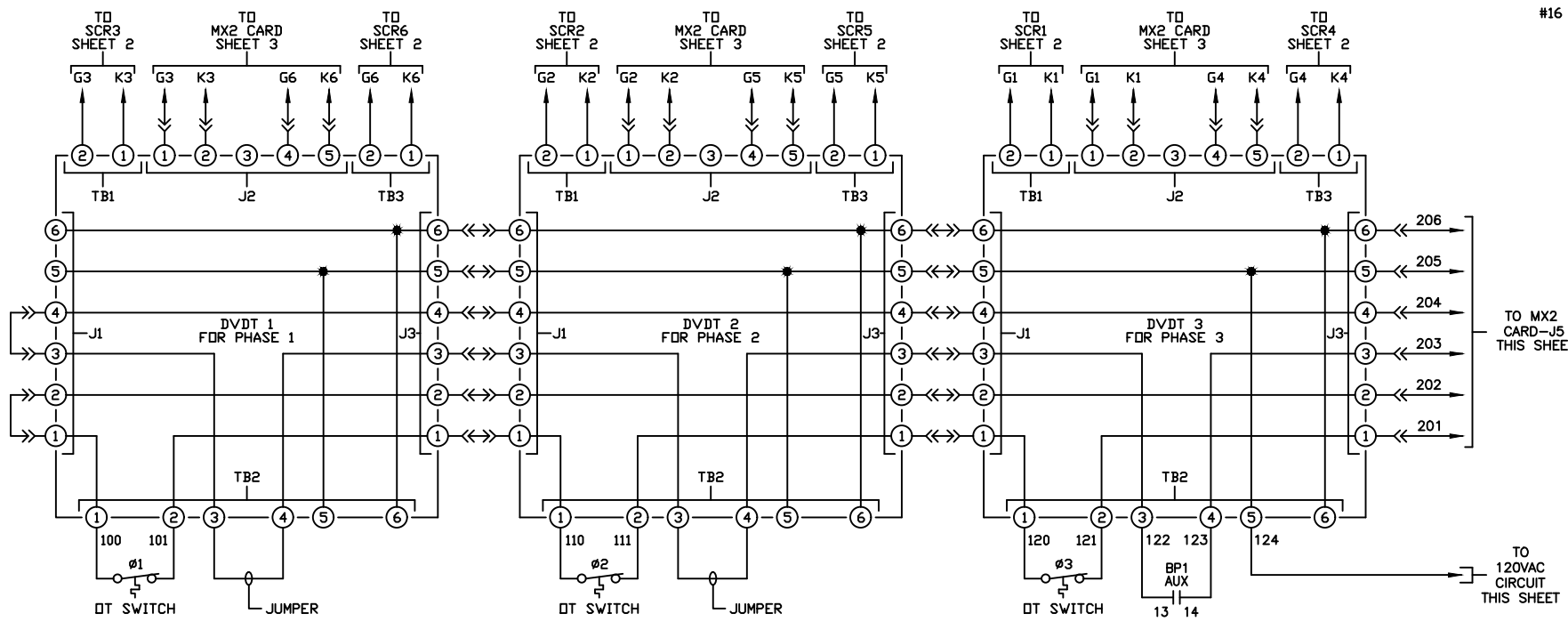
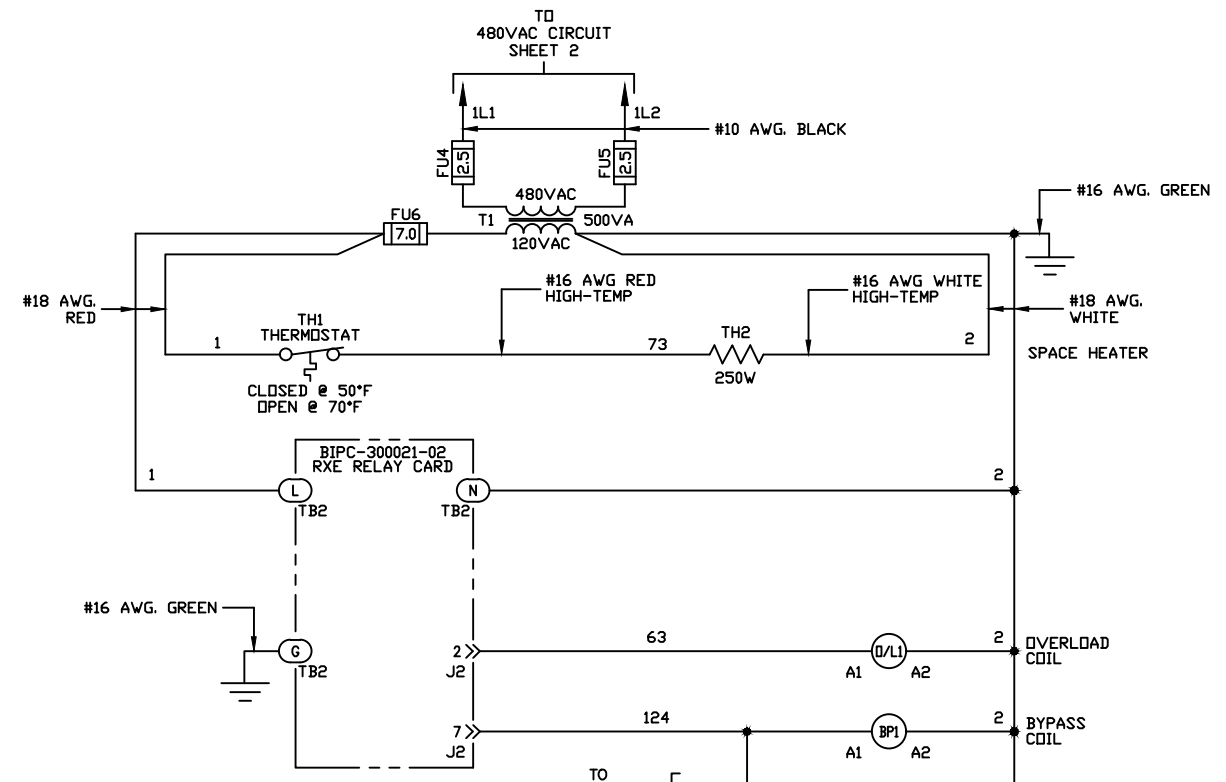
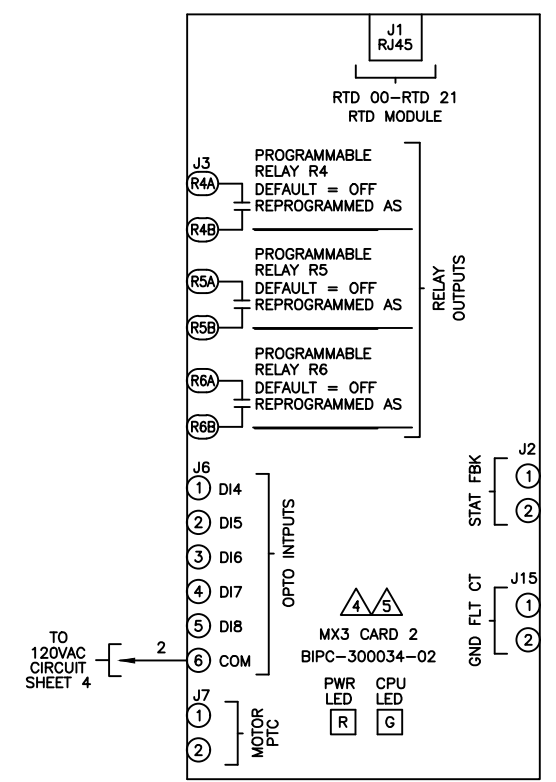
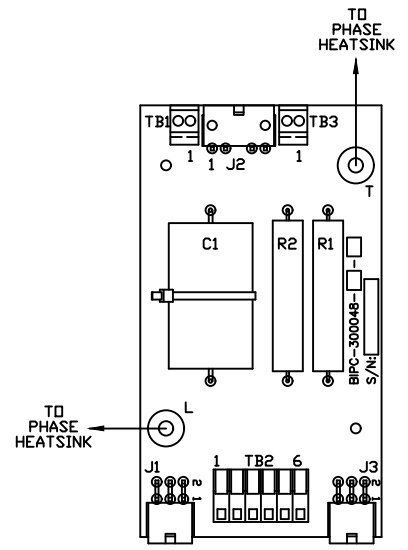


RX3E5004803RKP

18

RX3E5004803RKP

A
B
C
D
E
F
G
H
I
J
K
L
M
N



REVISIONS DO NOT SCALE DWG	THIRD ANGLE PROJECTION	UNLESS OTHERWISE SPECIFIED ALL DIMENSIONS IN INCHES INTERPRET DRAWING PER ASME Y14.5M-1994 TOLERANCES: .XX ± .03 .XXX ± .015 ANGLES ± 1°	TITLE: CONTROL SCHEMATIC RX3E-500-480-3RKP 500HP (590 AMPS) @ 480V (500% CURRENT FOR 30SECONDS, 125% CONTINUOUS DUTY RATED)	SIGNATURES: BDA DATE: 8/14/12	615 ALPHA DRIVE PITTSBURGH, PA. 15238 550 BRIGHT STREET LISTON, ONTARIO M4W 3W5
	THIS DRAWING AND ALL INFORMATION CONTAINED HEREIN IS THE PROPERTY OF BENSHAW INC. AND MAY NOT BE REPRODUCED, OR DIVULGED TO UNAUTHORIZED PERSONS WITHOUT THE EXPRESS WRITTEN CONSENT OF BENSHAW INC. IT IS PROVIDED SOLELY FOR THE CONVENIENCE OF THE USER AND SHALL BE RETURNED UPON REQUEST.		MFG: JAF DATE: 8/14/12	SIZE: D DWG NO.: SCALE: 1:1	
	MATERIAL:		REV: 18	RX3E5004803RKP	
	FINISH:		SHEET 4 OF 4		