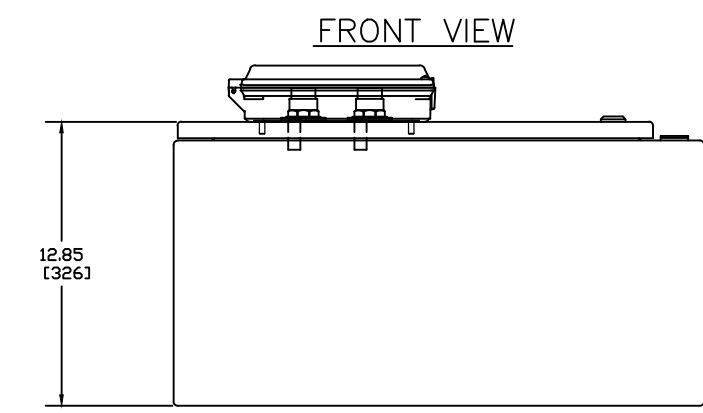
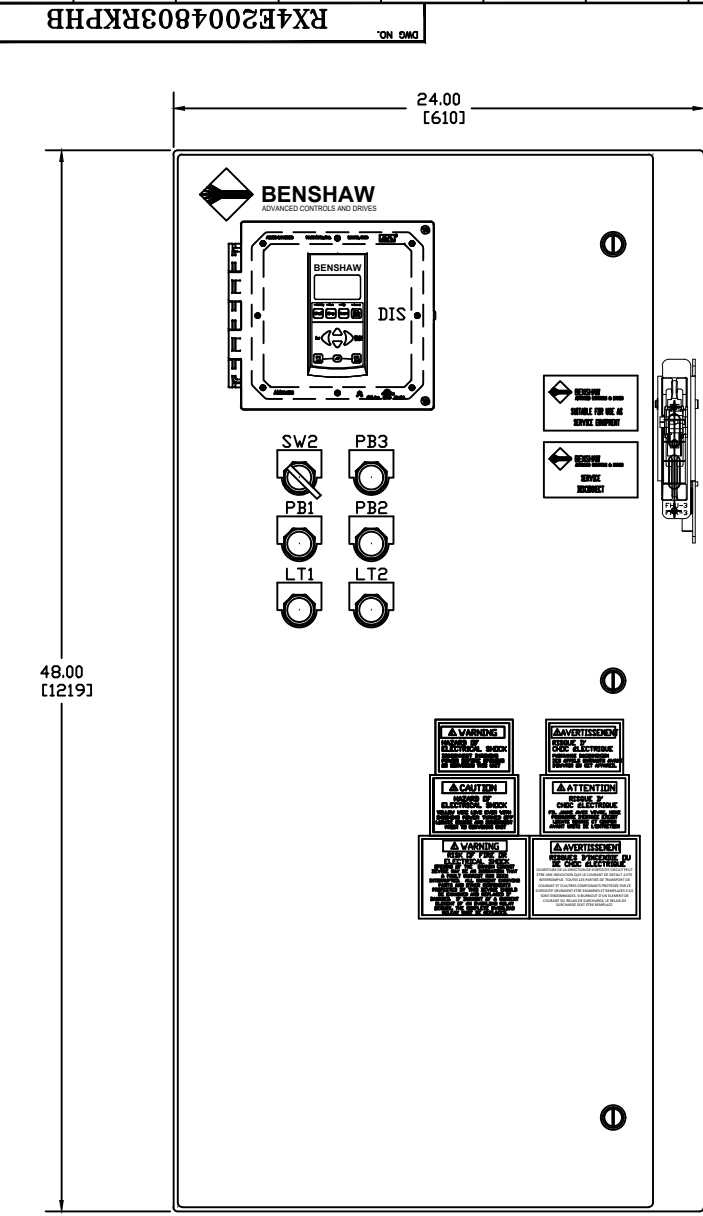


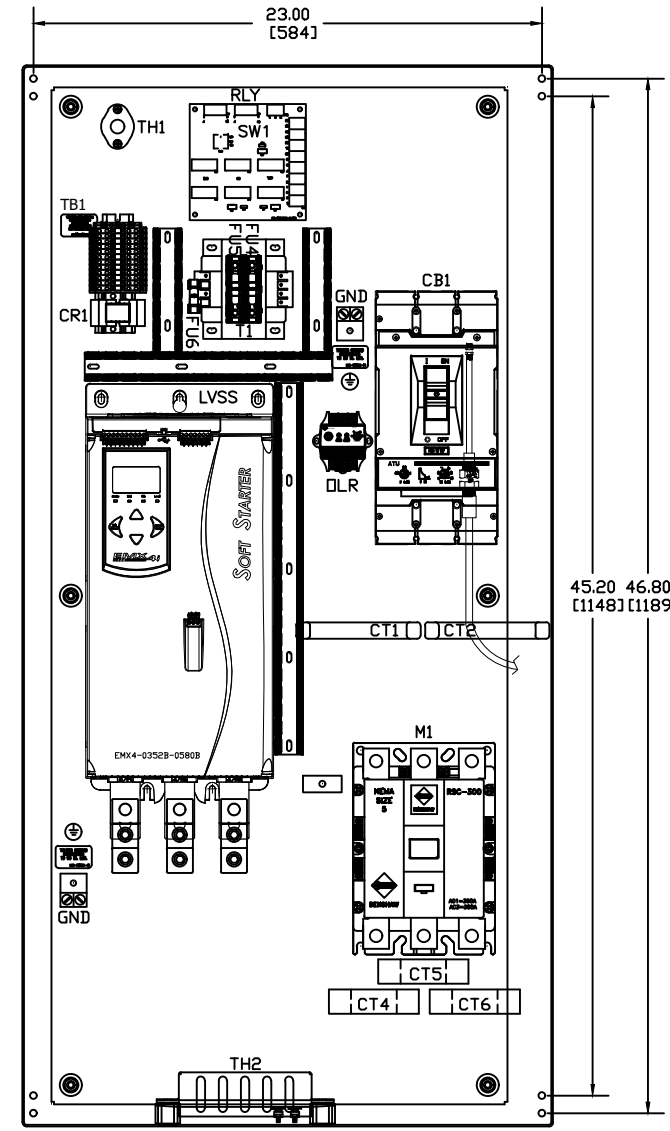
1 2 3 4 5 6 7 8 9 10 11 12 13 14 15 16 17 18 19 20 21 22 23 24 25 26 27 28



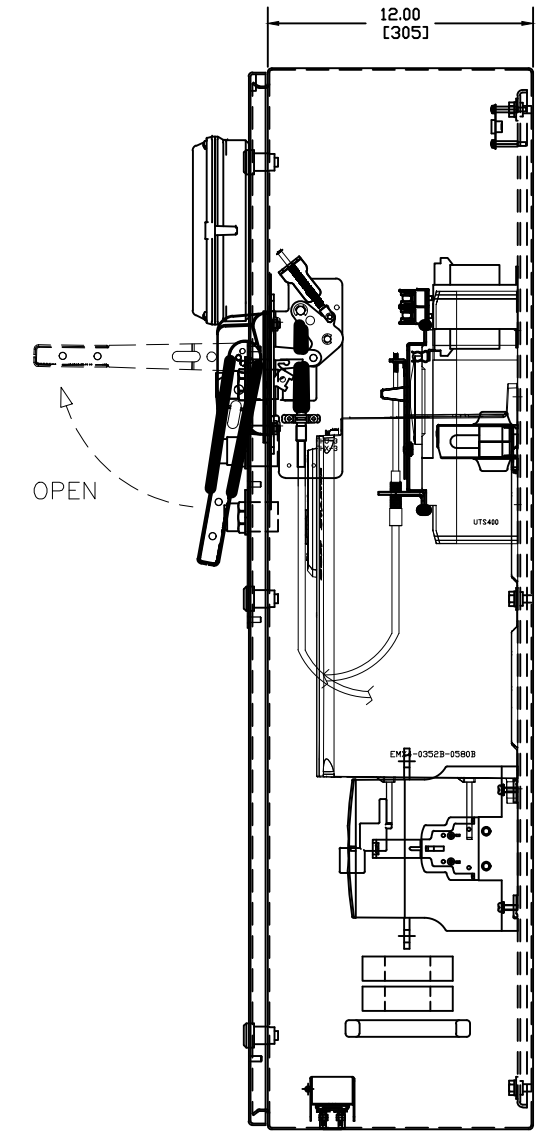
FRONT VIEW

BOTTOM VIEW

- LEGEND**
- CB1 CIRCUIT BREAKER
 - CR1 4 POLE MINI RELAY
 - CT4-6 OVERLOAD CT'S
 - DIS DOOR MOUNTED KEYPAD
 - FU4-5 PRIMARY FUSES (T1)
 - FU6 SECONDARY FUSE (T1)
 - GND GROUND LUGS
 - LT1 RUNNING PILOT LIGHT
 - LT2 FAULT PILOT LIGHT
 - LVSS EMX4 SOFT STARTER
 - M1 ATL CONTACTOR
 - DLR OVERLOAD RELAY
 - PB1 START PUSHBUTTON
 - PB2 STOP PUSHBUTTON
 - PB3 RESET PUSHBUTTON
 - RLY SS-ATL RELAY CARD
 - SW1 LVSS-ALT SEL. SWITCH
 - SW2 LOCAL-OFF-REMOTE SEL. SWITCH
 - T1 CONTROL POWER TRANSFORMER
 - TH1 THERMOSTAT
 - TH2 SPACE HEATER



PANEL VIEW



SIDE VIEW

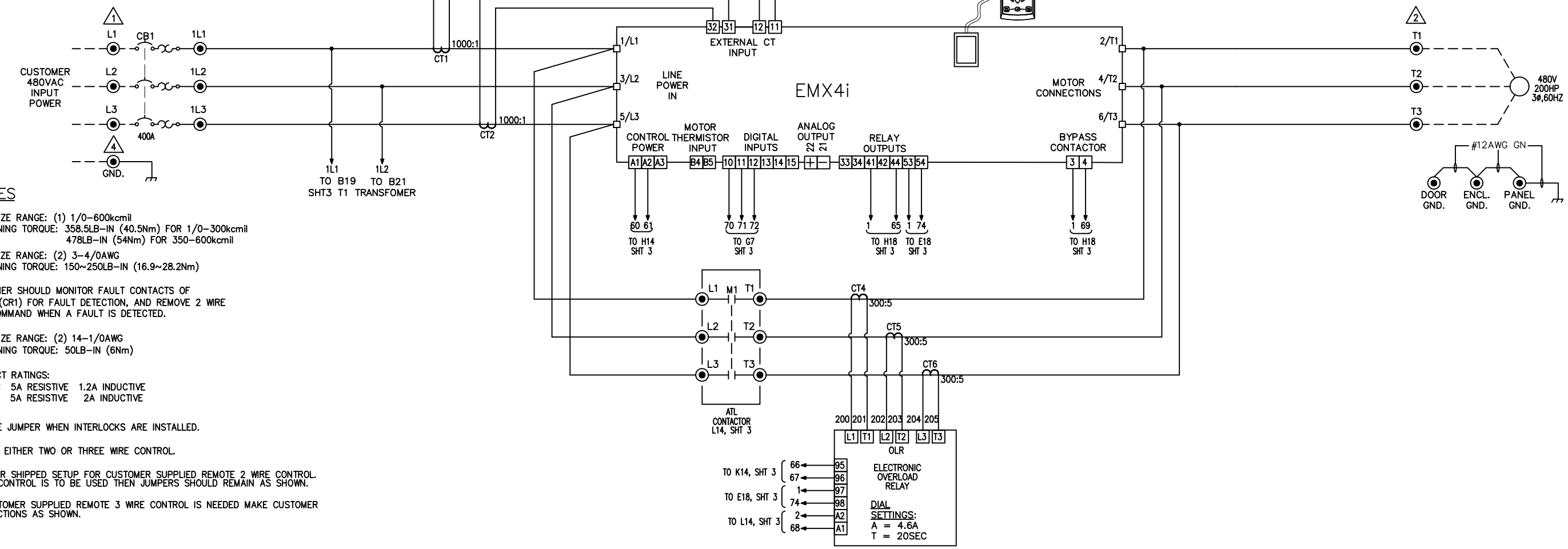
NOTES:

- 1 MINIMUM WIRE BENDING SPACE SHALL BE 10.00" FROM TOP OF CIRCUIT BREAKER POWER CONNECTION TO TOP OF ENCLOSURE.
- 2 ENSURE THAT ALL RIBBON CABLES ARE ROUTED AWAY FROM POWER CONDUCTORS.
- 3 MINIMUM WIRE BENDING SPACE SHALL BE 10.00" FROM BOTTOM OF POWERSTACK POWER CONNECTION TO BOTTOM OF ENCLOSURE.
- 4 ENCLOSURE LAYOUT IS DESIGNED FOR CABLE ENTRY/EXIT TO BE TOP/BOTTOM.

<p>2 APPRD: BDA 03/27/23 CHG BY: CDW 03/27/23 CHANGE REVISED PER REVISIONS UPDATE</p>	<p>1 APPRD: MSN 04/20/22 CHG BY: MSN 04/20/22 CHANGE: EMX41- TO EMX41- E</p>	<p>REVISIONS DO NOT SCALE DWG</p>	<p>THIRD ANGLE PROJECTION</p>	<p>UNLESS OTHERWISE SPECIFIED ALL DIMENSIONS IN INCHES INTERPRET DRAWING PER ASME Y14.5M-1994 TOLERANCES: .XX ± .03 .XXX ± .015 ANGLES ± 1°</p>	<p>TITLE: ENCLOSURE LAYOUT RX4E-200-480-3RKP-HB 200HP (240 AMPS) @ 480V (450% CURRENT FOR 30SECONDS, 125% CONTINUOUS DUTY RATED)</p>	<table border="1"> <tr> <th>SIGNATURES</th> <th>DATE</th> </tr> <tr> <td>DRWN: MSN 08/17/20</td> <td></td> </tr> <tr> <td>CHRD: BDA 08/17/20</td> <td></td> </tr> <tr> <td>ENG: MSN 08/17/20</td> <td></td> </tr> <tr> <td>MFG:</td> <td></td> </tr> </table>	SIGNATURES	DATE	DRWN: MSN 08/17/20		CHRD: BDA 08/17/20		ENG: MSN 08/17/20		MFG:		<p>BENSCHAW</p> <p>615 ALPHA DRIVE PITTSBURGH, PA. 15238</p> <p>550 BRIGHT STREET LISTWEL ONTARIO M4W 3W5</p>
SIGNATURES	DATE																
DRWN: MSN 08/17/20																	
CHRD: BDA 08/17/20																	
ENG: MSN 08/17/20																	
MFG:																	
<p>SCALE: 1:4</p>					<p>SIZE: D</p>	<p>DWG NO. RX4E2004803RKP HB</p>	<p>REV 2</p>										
						<p>SHEET 1 OF 3</p>											

RX4E2004803RKP HB

SETTINGS CHANGED DURING FACTORY TESTING:
 (1B) - MOTOR FLA
 (1F) - 115
 (2D) - 450
 (8A) - OPERATING
 (8D) - TRIP



- NOTES**
- ① WIRE SIZE RANGE: (1) 1/0-600kcmil
TIGHTENING TORQUE: 358.5LB-IN (40.5Nm) FOR 1/0-300kcmil
478LB-IN (54Nm) FOR 350-600kcmil
 - ② WIRE SIZE RANGE: (2) 3-4/0AWG
TIGHTENING TORQUE: 150~250LB-IN (16.9~28.2Nm)
 - ③ CUSTOMER SHOULD MONITOR FAULT CONTACTS OF RELAY (CR1) FOR FAULT DETECTION, AND REMOVE 2 WIRE RUN COMMAND WHEN A FAULT IS DETECTED.
 - ④ WIRE SIZE RANGE: (2) 14-1/0AWG
TIGHTENING TORQUE: 50LB-IN (6Nm)
 - ⑤ CONTACT RATINGS:
240VAC 5A RESISTIVE 1.2A INDUCTIVE
30VDC 5A RESISTIVE 2A INDUCTIVE
 - ⑥ REMOVE JUMPER WHEN INTERLOCKS ARE INSTALLED.
 - ⑦ SELECT EITHER TWO OR THREE WIRE CONTROL.
 - ⑧ STARTER SHIPPED SETUP FOR CUSTOMER SUPPLIED REMOTE 2 WIRE CONTROL. IF NO CONTROL IS TO BE USED THEN JUMPERS SHOULD REMAIN AS SHOWN.
 - ⑨ IF CUSTOMER SUPPLIED REMOTE 3 WIRE CONTROL IS NEEDED MAKE CUSTOMER CONNECTIONS AS SHOWN.

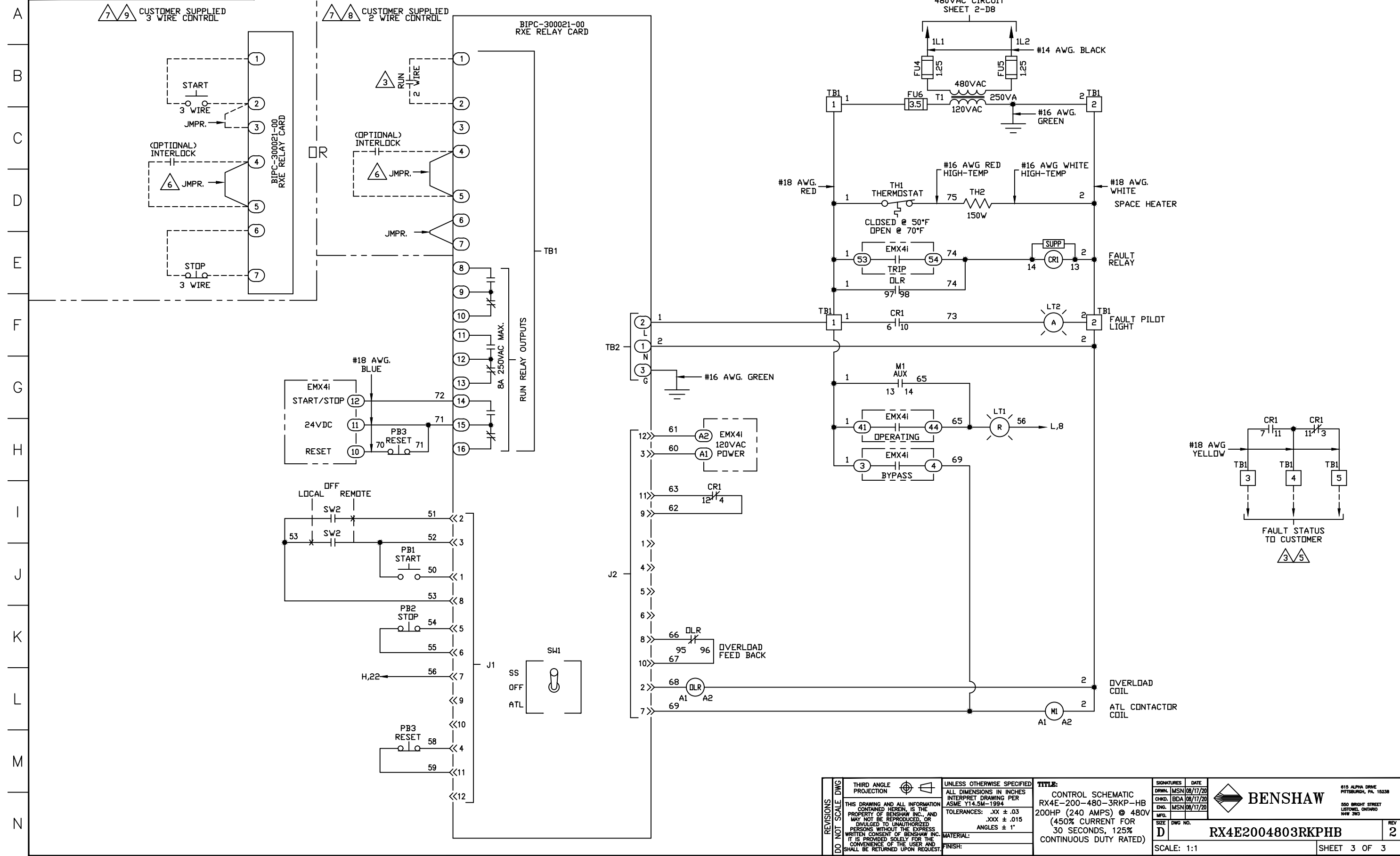
STANDARD LEGEND

- ⊙ WIRE NODE SYMBOL MAY HAVE TERMINAL BLOCK
- BENSCHAW SUPPLIED TERMINAL BLOCK
- TERMINAL STRIP
- ⊙ POWER CONNECTION
- PC BOARD TERMINALS
- ⧘ TWISTED PAIR
- ⧘ TWISTED SHIELDED PAIR
- ⧘ SHIELDED WIRE
- FIELD WIRING

REVISIONS DO NOT SCALE DWG	THIRD ANGLE PROJECTION	UNLESS OTHERWISE SPECIFIED ALL DIMENSIONS IN INCHES INTERPRET DRAWING PER ASME Y14.5M-1994 TOLERANCES: .XX ± .03 .XXX ± .015 ANGLES ± 1°	TITLE: POWER SCHEMATIC RX4E-200-480-3RKP-HB 200HP (240 AMPS) @ 480V (450% CURRENT FOR 30SECONDS, 125% CONTINUOUS DUTY RATED)	SIGNATURES DRWN: MSN 08/17/20 CHKD: BDA 08/17/20 ENG: MSN 08/17/20 MFG:	DATE 08/17/20		
	THIS DRAWING AND ALL INFORMATION CONTAINED HEREIN IS THE PROPERTY OF BENSCHAW INC. AND MAY NOT BE REPRODUCED, OR DIVULGED TO UNAUTHORIZED PERSONS WITHOUT THE EXPRESS WRITTEN CONSENT OF BENSCHAW INC. IT IS PROVIDED SOLELY FOR THE CONVENIENCE OF THE USER AND SHALL BE RETURNED UPON REQUEST.			MATERIAL:	FINISH:		
	BENSCHAW 615 ALPHA DRIVE PITTSBURGH, PA. 15238 550 BRIGHT STREET LISTONEL, ONTARIO N4W 3W5			SIZE D	DWG NO. RX4E2004803RKP HB	REV 2	
	SCALE: 1:1			SHEET 2 OF 3			

1 2 3 4 5 6 7 8 9 10 11 12 13 14 15 16 17 18 19 20 21 22 23 24 25 26 27 28

RX4E2004803RKP HB



REVISIONS DO NOT SCALE DWG	THIRD ANGLE PROJECTION	UNLESS OTHERWISE SPECIFIED	
	THIS DRAWING AND ALL INFORMATION CONTAINED HEREIN IS THE PROPERTY OF BENSCHAW INC. AND MAY NOT BE REPRODUCED, OR DIVULGED TO UNAUTHORIZED PERSONS WITHOUT THE EXPRESS WRITTEN CONSENT OF BENSCHAW INC. IT IS PROVIDED SOLELY FOR THE CONVENIENCE OF THE USER AND SHALL BE RETURNED UPON REQUEST.	ALL DIMENSIONS IN INCHES INTERPRET DRAWING PER ASME Y14.5M-1994	TOLERANCES: .XX ± .03 .XXX ± .015 ANGLES ± 1°
			MATERIAL:
			FINISH:

TITLE:
CONTROL SCHEMATIC
RX4E-200-480-3RKP-HB
200HP (240 AMPS) @ 480V
(450% CURRENT FOR
30 SECONDS, 125%
CONTINUOUS DUTY RATED)

SIGNATURES	DATE
DRWN: MSN	08/17/20
CHD: BDA	08/17/20
ENG: MSN	08/17/20
MFG:	

BENSCHAW

615 ALPHA DRIVE
PITTSBURGH, PA. 15238

550 BRIGHT STREET
LITTON, ONTARIO
M4W 3W5

SIZE: D
DWG NO.: RX4E2004803RKP HB
REV: 2

SCALE: 1:1 SHEET 3 OF 3