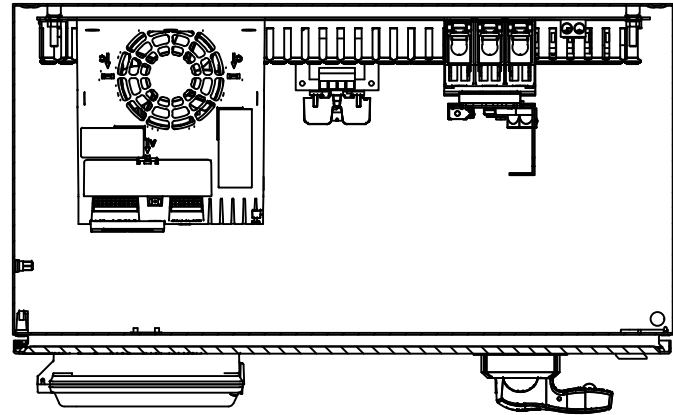


1 2 3 4 5 6 7 8 9 10 11 12 13 14 15 16 17 18 19 20 21 22 23 24 25 26 27 28

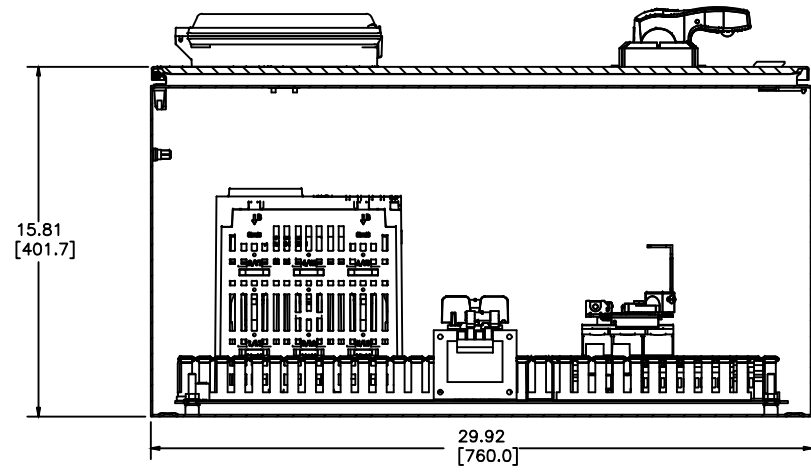
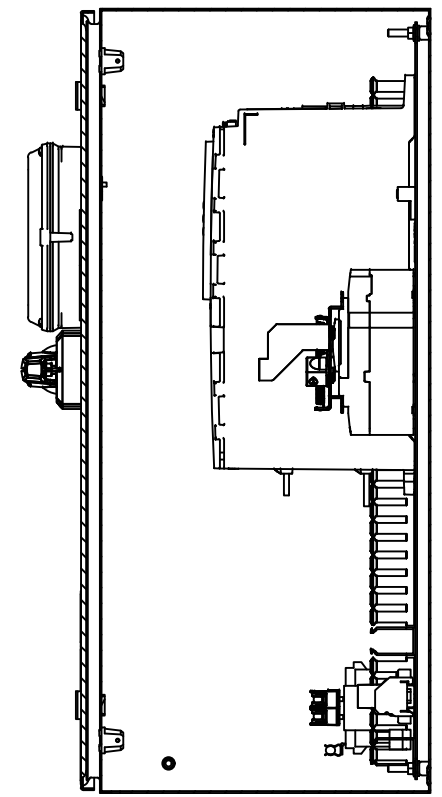
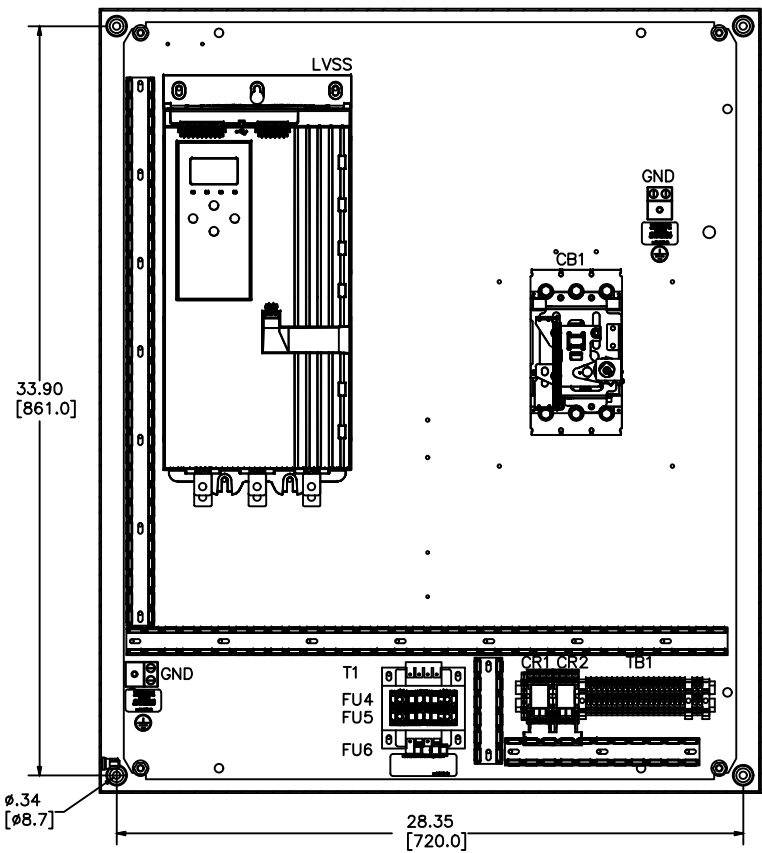
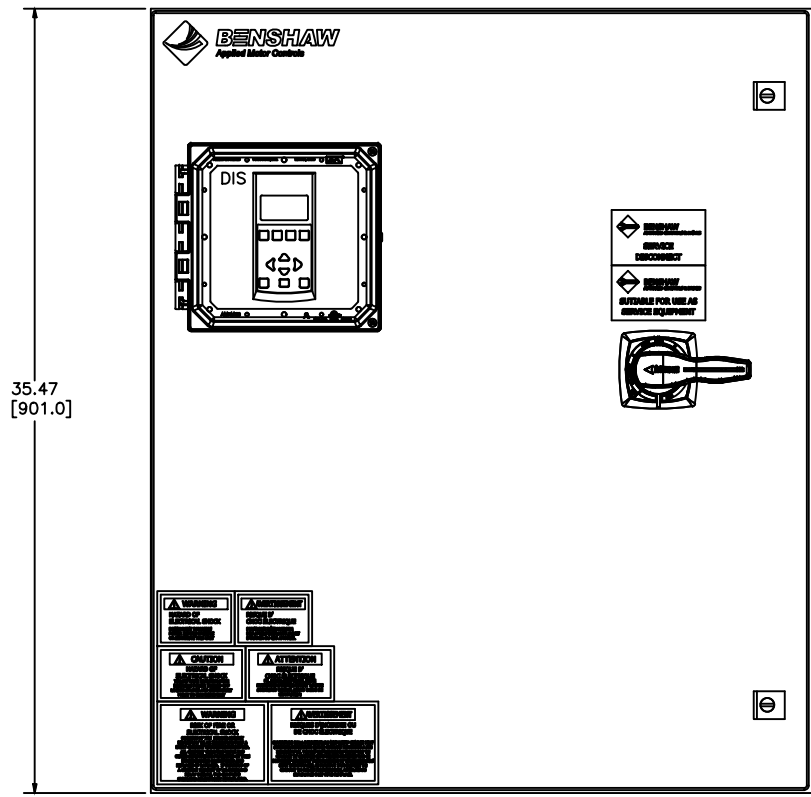
MX4PB-HD-050-2-4-HB

A  
B  
C  
D  
E  
F  
G  
H  
I  
J  
K  
L  
M  
N



**LABEL LEGEND**

- CB1: CIRCUIT BREAKER
- GND: GROUND LUG
- LVSS: EMX4I SOFT START (W/INTEGRAL BYPASS)
- TB1: TERMINAL BLOCKS
- CR1-2: CONTROL RELAYS
- T1: CONTROL POWER TRANSFORMER
- FU4-FU5: PRIMARY FUSES (T1)
- FU6: SECONDARY FUSE (T1)
- DIS: EMX4I LCD DISPLAY/KEYPAD



**NOTES:**

- 1 MINIMUM WIRE BENDING SPACE SHALL BE 8.00" FROM TOP OF CIRCUIT BREAKER POWER CONNECTION TO TOP OF ENCLOSURE.
- 2 ENSURE THAT ALL RIBBON CABLES ARE ROUTED AWAY FROM POWER CONDUCTORS.
- 3 MINIMUM WIRE BENDING SPACE SHALL BE 8.00" FROM BOTTOM OF POWERSTACK POWER CONNECTION TO BOTTOM OF ENCLOSURE.

OPTIONS AND CODE NUMBERS			
OPTION	DISPLAY	HEATER	CONTROL
CODE NO.	YES		

APPROD: BDA 2/8/24	THIRD ANGLE PROJECTION	UNLESS OTHERWISE SPECIFIED
CHK BY: RWS 2/8/24	THIS DRAWING AND ALL INFORMATION CONTAINED HEREIN IS THE PROPERTY OF BENSCHAW INC. AND MAY NOT BE REPRODUCED OR DIVULGED TO UNAUTHORIZED PERSONS WITHOUT THE EXPRESS WRITTEN CONSENT OF BENSCHAW INC. IT IS PROVIDED SOLELY FOR THE CONVENIENCE OF THE USER AND SHALL BE RETURNED UPON REQUEST.	ALL DIMENSIONS IN INCHES INTERPRET DRAWING PER ASME Y14.5M-1994
CHANGED TO: BRANDED TERMINAL BLOCKS	DO NOT SCALE DWG	TOLERANCES: .XX ± .03 .XXX ± .015 ANGLES ± 1°
REVISIONS	REVISIONS	MATERIAL:

**TITLE:**  
ENCLOSURE LAYOUT  
MODULAR REDUCED VOLTAGE  
SOLID STATE STARTER  
NEMA 4/12 WITH  
INTEGRAL BYPASS

SIGNATURES	DATE
DRWN: BDA	3/18/20
CHKD: NMK	3/18/20
ENG: BDA	3/18/20
MFG:	
SIZE	DWG NO.
D	

**BENSCHAW**

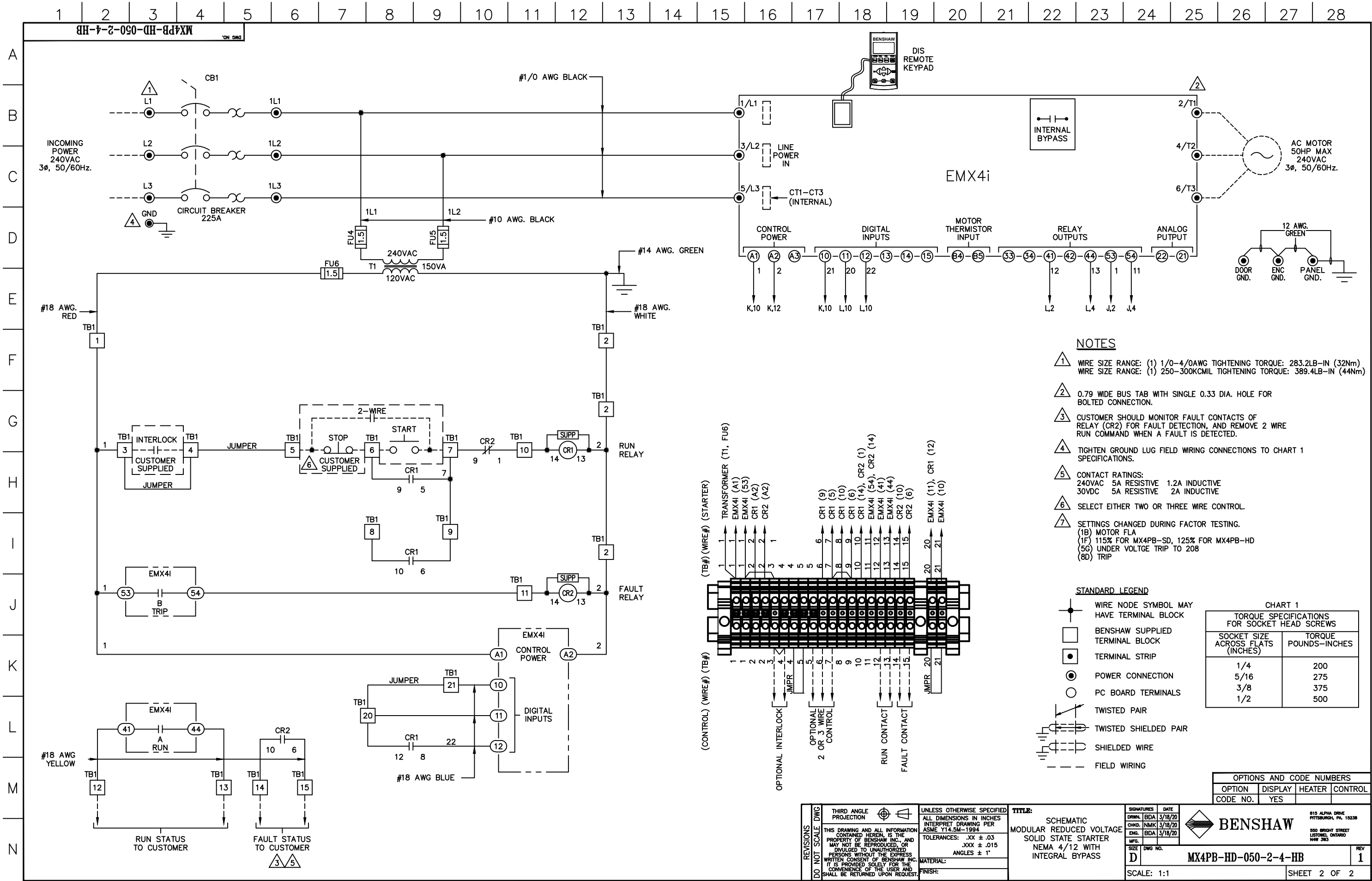
615 ALPHA DRIVE  
PITTSBURGH, PA. 15238

550 BRIGHT STREET  
LISTOWEL, ONTARIO  
M4W 3W5

**MX4PB-HD-050-2-4-HB**

REV 1

SCALE: 1:4 SHEET 1 OF 2



**REVISIONS**  
DO NOT SCALE DWG

THIRD ANGLE PROJECTION

UNLESS OTHERWISE SPECIFIED  
ALL DIMENSIONS IN INCHES  
INTERPRET DRAWING PER  
ASME Y14.5M-1994  
TOLERANCES: .XX  $\pm$  .03  
.XXX  $\pm$  .015  
ANGLES  $\pm$  1'

MATERIAL:

**TITLE:**  
SCHEMATIC  
MODULAR REDUCED VOLTAGE  
SOLID STATE STARTER  
NEMA 4/12 WITH  
INTEGRAL BYPASS

**SIGNATURES**  
DATE

DRWN: BDA 3/18/20  
CHKD: NMK 3/18/20  
ENG: BDA 3/18/20

SIZE  
D

DWG NO.

**BENSHAW**

615 ALPHA DRIVE  
PITTSBURGH, PA. 15238

550 BRIGHT STREET  
LISTWEL, ONTARIO  
M4W 3N5

**MX4PB-HD-050-2-4-HB**

REV 1

SCALE: 1:1 SHEET 2 OF 2