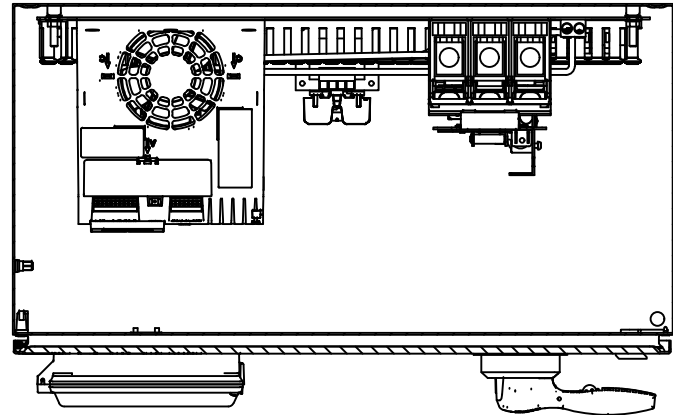


1 2 3 4 5 6 7 8 9 10 11 12 13 14 15 16 17 18 19 20 21 22 23 24 25 26 27 28

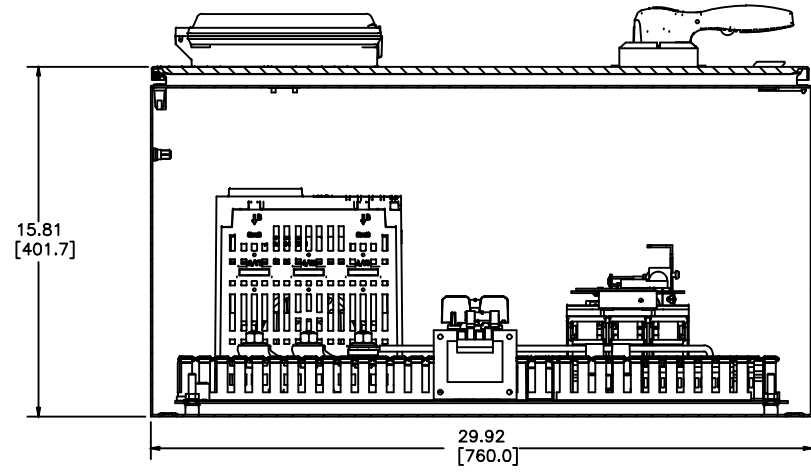
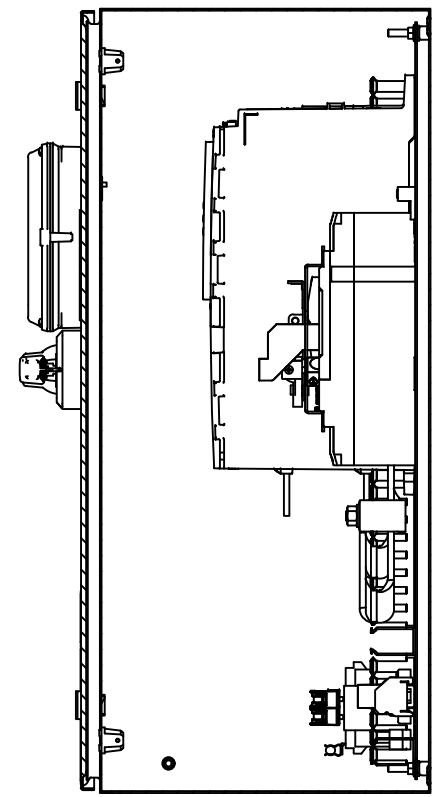
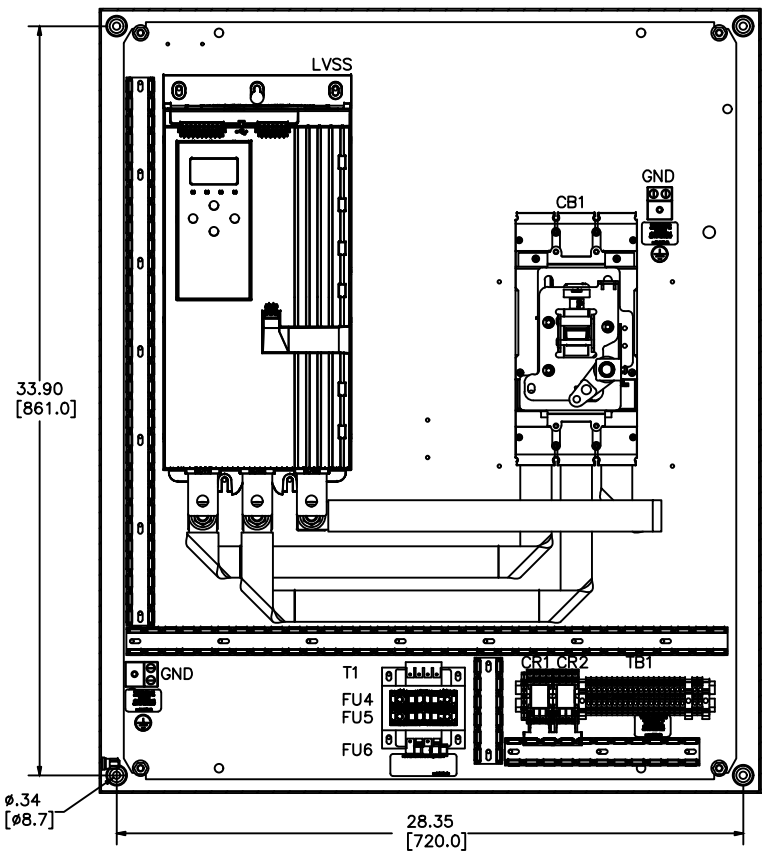
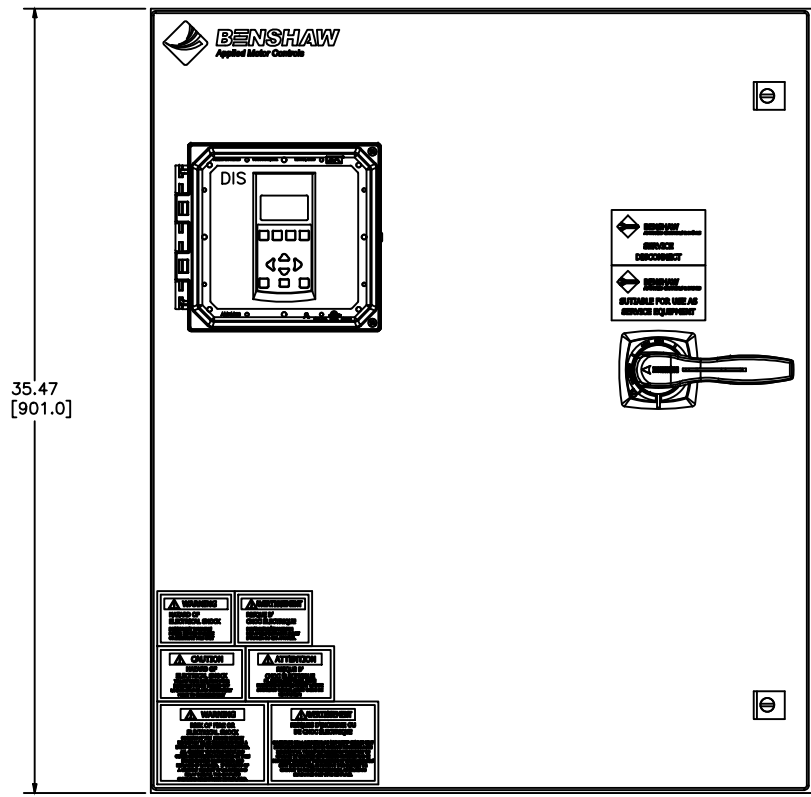
MX4PB-HD-200-4-4-HB

A
B
C
D
E
F
G
H
I
J
K
L
M
N



LABEL LEGEND

- CB1: CIRCUIT BREAKER
- GND: GROUND LUG
- LVSS: EMX4I SOFT START (W/INTEGRAL BYPASS)
- TB1: TERMINAL BLOCKS
- CR1-2: CONTROL RELAYS
- T1: CONTROL POWER TRANSFORMER
- FU4-FU5: PRIMARY FUSES (T1)
- FU6: SECONDARY FUSE (T1)
- DIS: EMX4I LCD DISPLAY/KEYPAD

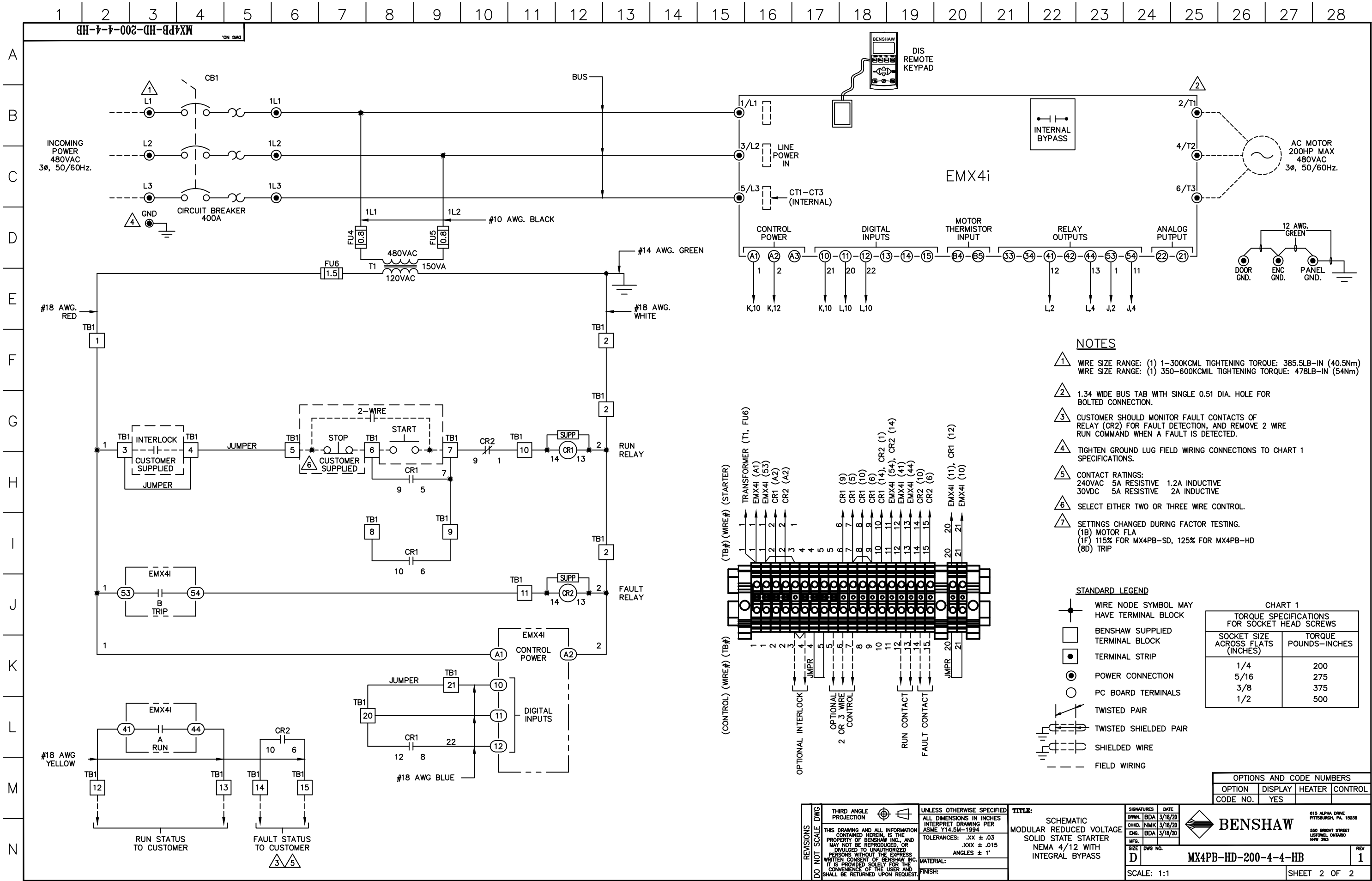


NOTES:

- 1 MINIMUM WIRE BENDING SPACE SHALL BE 8.00" FROM TOP OF CIRCUIT BREAKER POWER CONNECTION TO TOP OF ENCLOSURE.
- 2 ENSURE THAT ALL RIBBON CABLES ARE ROUTED AWAY FROM POWER CONDUCTORS.
- 3 MINIMUM WIRE BENDING SPACE SHALL BE 8.00" FROM BOTTOM OF POWERSTACK POWER CONNECTION TO BOTTOM OF ENCLOSURE.

OPTIONS AND CODE NUMBERS			
OPTION	DISPLAY	HEATER	CONTROL
CODE NO.	YES		

1 APPR'D: BDA 2/8/24 CHG BY: RWS 2/8/24 CHANGE CHANGED BRAND OF TERMINAL BLOCKS	REVISIONS DO NOT SCALE DWG	THIRD ANGLE PROJECTION 	UNLESS OTHERWISE SPECIFIED ALL DIMENSIONS IN INCHES INTERPRET DRAWING PER ASME Y14.5M-1994 TOLERANCES: .XX ± .03 .XXX ± .015 ANGLES ± 1°	TITLE: ENCLOSURE LAYOUT MODULAR REDUCED VOLTAGE SOLID STATE STARTER NEMA 4/12 WITH INTEGRAL BYPASS	SIGNATURES DRW: BDA 3/18/20 CHD: NMK 3/18/20 ENG: BDA 3/18/20	DATE 3/18/20	615 ALPHA DRIVE PITTSBURGH, PA. 15238 550 BRIGHT STREET LISTOWEL, ONTARIO M4W 3W5	REV 1
					SIZE D	DWG NO. MX4PB-HD-200-4-4-HB		
					SCALE: 1:4	SHEET 1 OF 2		



- NOTES**
- ① WIRE SIZE RANGE: (1) 1-300KCMIL TIGHTENING TORQUE: 385.5LB-IN (40.5Nm)
WIRE SIZE RANGE: (1) 350-600KCMIL TIGHTENING TORQUE: 478LB-IN (54Nm)
 - ② 1.34 WIDE BUS TAB WITH SINGLE 0.51 DIA. HOLE FOR BOLTED CONNECTION.
 - ③ CUSTOMER SHOULD MONITOR FAULT CONTACTS OF RELAY (CR2) FOR FAULT DETECTION, AND REMOVE 2 WIRE RUN COMMAND WHEN A FAULT IS DETECTED.
 - ④ TIGHTEN GROUND LUG FIELD WIRING CONNECTIONS TO CHART 1 SPECIFICATIONS.
 - ⑤ CONTACT RATINGS:
240VAC 5A RESISTIVE 1.2A INDUCTIVE
30VDC 5A RESISTIVE 2A INDUCTIVE
 - ⑥ SELECT EITHER TWO OR THREE WIRE CONTROL.
 - ⑦ SETTINGS CHANGED DURING FACTOR TESTING.
(1B) MOTOR FLA
(1F) 115% FOR MX4PB-SD, 125% FOR MX4PB-HB
(8D) TRIP

- STANDARD LEGEND**
- WIRE NODE SYMBOL MAY HAVE TERMINAL BLOCK
 - BENSCHAW SUPPLIED TERMINAL BLOCK
 - TERMINAL STRIP
 - POWER CONNECTION
 - PC BOARD TERMINALS
 - TWISTED PAIR
 - TWISTED SHIELDED PAIR
 - SHIELDED WIRE
 - - - FIELD WIRING

CHART 1
TORQUE SPECIFICATIONS FOR SOCKET HEAD SCREWS

SOCKET SIZE ACROSS FLATS (INCHES)	TORQUE POUNDS-INCHES
1/4	200
5/16	275
3/8	375
1/2	500

OPTIONS AND CODE NUMBERS

OPTION	DISPLAY	HEATER	CONTROL
CODE NO.	YES		

REVISIONS
DO NOT SCALE DWG

THIRD ANGLE PROJECTION

UNLESS OTHERWISE SPECIFIED
ALL DIMENSIONS IN INCHES
INTERPRET DRAWING PER
ASME Y14.5M-1994

TOLERANCES: .XX ± .03
.XXX ± .015
ANGLES ± 1°

MATERIAL:

TITLE:
SCHEMATIC
MODULAR REDUCED VOLTAGE
SOLID STATE STARTER
NEMA 4/12 WITH
INTEGRAL BYPASS

SIGNATURES
DRWN: BDA 3/18/20
CHD: NMK 3/18/20
ENG: BDA 3/18/20

DATE
3/18/20

BENSCHAW
615 ALPHA DRIVE
PITTSBURGH, PA. 15238
550 BRIGHT STREET
LISTON, ONTARIO
M4W 3W5

SCALE: 1:1

SHEET 2 OF 2

SIZE: D
DWG NO.: MX4PB-HD-200-4-4-HB
REV: 1