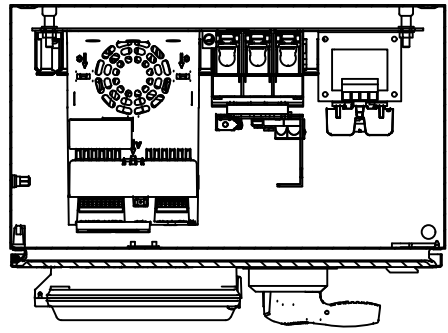


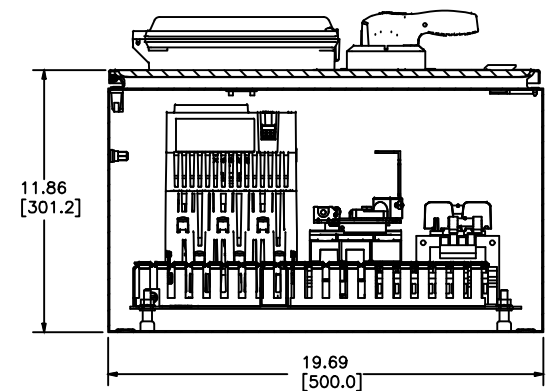
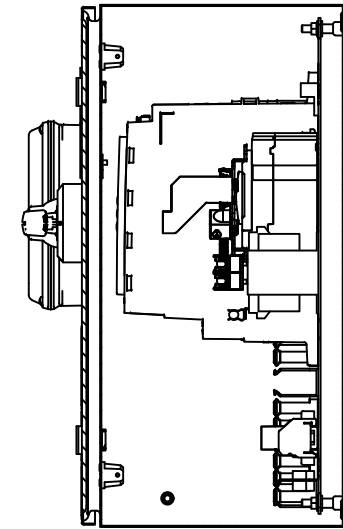
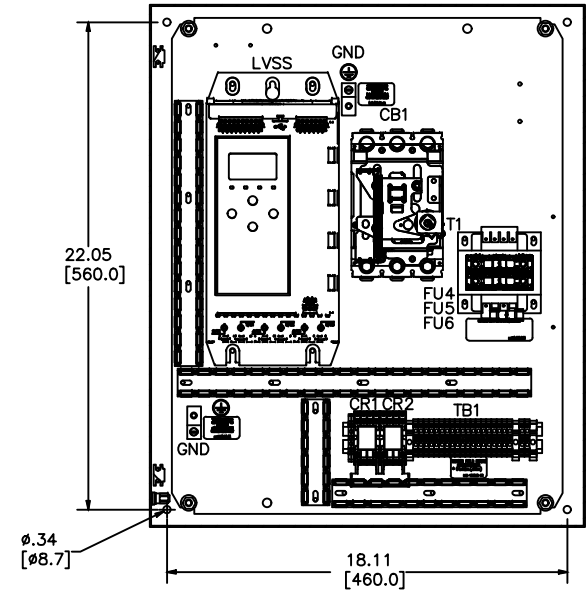
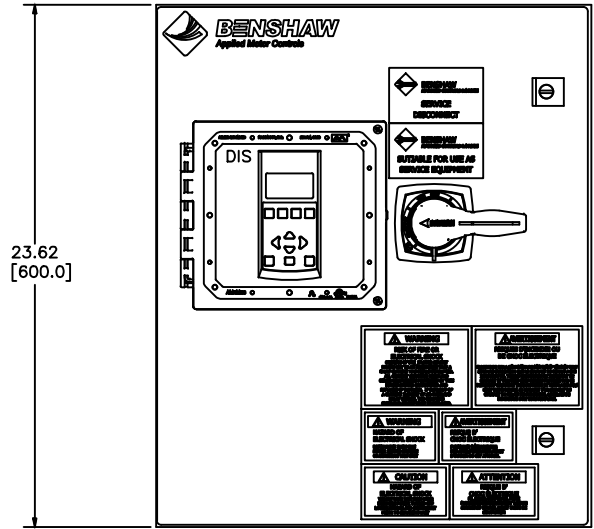
MX4PB-SD-030-4-4-HB

A  
B  
C  
D  
E  
F  
G  
H  
I  
J  
K  
L  
M  
N



**LABEL LEGEND**

- CB1: CIRCUIT BREAKER
- GND: GROUND LUG
- LVSS: EMX4I SOFT START (W/INTEGRAL BYPASS)
- TB1: TERMINAL BLOCKS
- CR1-2: CONTROL RELAYS
- T1: CONTROL POWER TRANSFORMER
- FU4-FU5: PRIMARY FUSES (T1)
- FU6: SECONDARY FUSE (T1)
- DIS: EMX4I LCD DISPLAY/KEYPAD

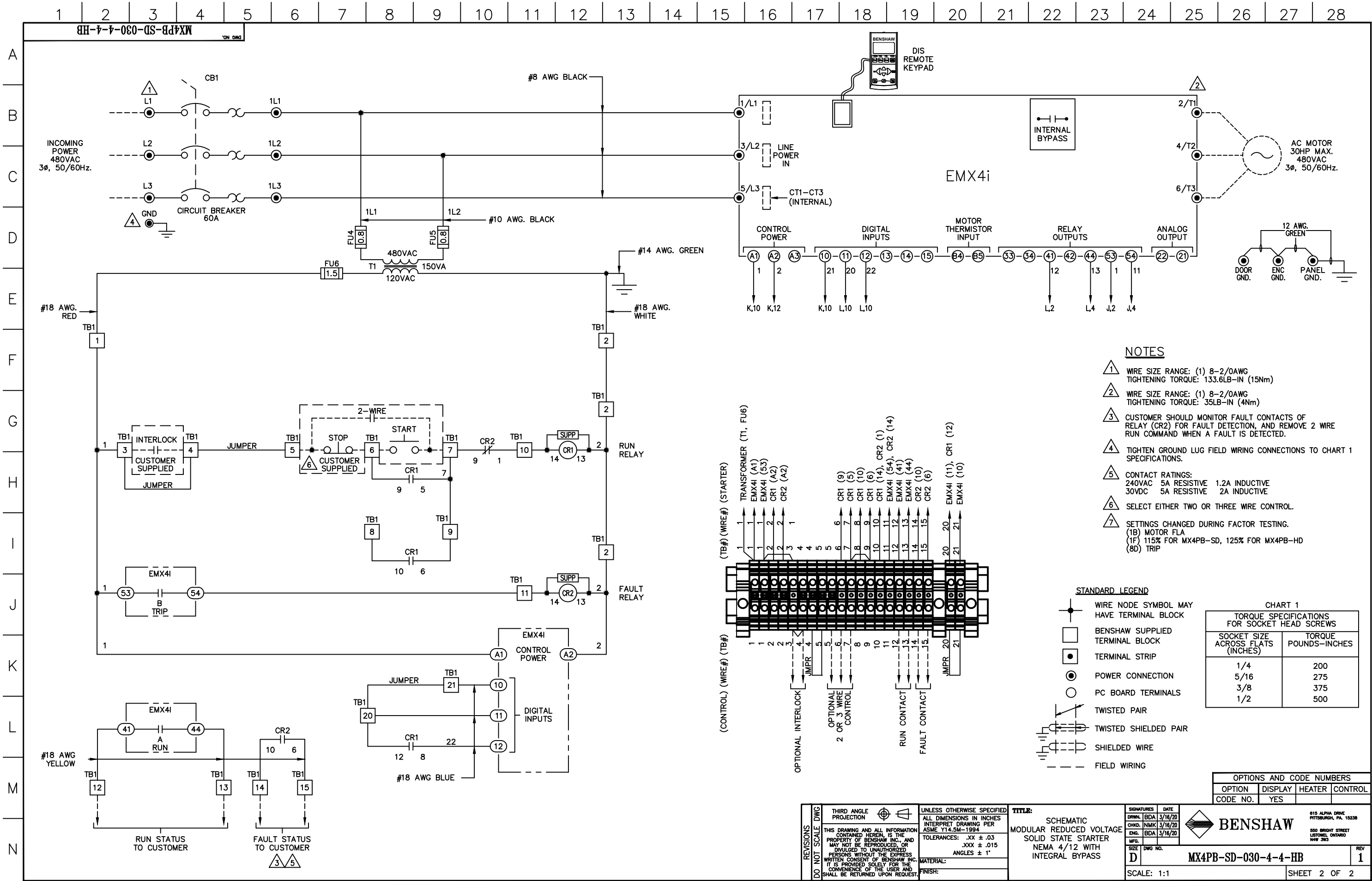


**NOTES:**

- 1 MINIMUM WIRE BENDING SPACE SHALL BE 5.00" FROM TOP OF CIRCUIT BREAKER POWER CONNECTION TO TOP OF ENCLOSURE.
- 2 ENSURE THAT ALL RIBBON CABLES ARE ROUTED AWAY FROM POWER CONDUCTORS.
- 3 MINIMUM WIRE BENDING SPACE SHALL BE 5.00" FROM BOTTOM OF POWERSTACK POWER CONNECTION TO BOTTOM OF ENCLOSURE.

OPTIONS AND CODE NUMBERS			
OPTION	DISPLAY	HEATER	CONTROL
CODE NO.	YES		

1 APPRD: BDA 2/8/24 CHG BY: RWS 2/8/24 CHANGE CHANGED BRAND OF TERMINAL BLOCKS	REVISIONS DO NOT SCALE DWG	THIRD ANGLE PROJECTION	UNLESS OTHERWISE SPECIFIED ALL DIMENSIONS IN INCHES INTERPRET DRAWING PER ASME Y14.5M-1994 TOLERANCES: .XX ± .03 .XXX ± .015 ANGLES ± 1°	<b>TITLE:</b> ENCLOSURE LAYOUT MODULAR REDUCED VOLTAGE SOLID STATE STARTER NEMA 4/12 WITH INTEGRAL BYPASS	SIGNATURES DRW: BDA 3/16/20 CHD: NMK 3/16/20 ENG: BDA 3/16/20	DATE 3/16/20	615 ALPHA DRIVE PITTSBURGH, PA. 15238 550 BRIGHT STREET LISTOWEL, ONTARIO M4W 3W5		
		THIS DRAWING AND ALL INFORMATION CONTAINED HEREIN IS THE PROPERTY OF BENSHAW INC. AND MAY NOT BE REPRODUCED, OR DIVULGED TO UNAUTHORIZED PERSONS WITHOUT THE EXPRESS WRITTEN CONSENT OF BENSHAW INC. IT IS PROVIDED SOLELY FOR THE CONVENIENCE OF THE USER AND SHALL BE RETURNED UPON REQUEST.			MATERIAL: FINISH:	SIZE D		DWG NO. MX4PB-SD-030-4-4-HB	REV 1
		SCALE: 1:4			SHEET 1 OF 2				



- NOTES**
- ① WIRE SIZE RANGE: (1) 8-2/0AWG  
TIGHTENING TORQUE: 133.6LB-IN (15Nm)
  - ② WIRE SIZE RANGE: (1) 8-2/0AWG  
TIGHTENING TORQUE: 35LB-IN (4Nm)
  - ③ CUSTOMER SHOULD MONITOR FAULT CONTACTS OF RELAY (CR2) FOR FAULT DETECTION, AND REMOVE 2 WIRE RUN COMMAND WHEN A FAULT IS DETECTED.
  - ④ TIGHTEN GROUND LUG FIELD WIRING CONNECTIONS TO CHART 1 SPECIFICATIONS.
  - ⑤ CONTACT RATINGS:  
240VAC 5A RESISTIVE 1.2A INDUCTIVE  
30VDC 5A RESISTIVE 2A INDUCTIVE
  - ⑥ SELECT EITHER TWO OR THREE WIRE CONTROL.
  - ⑦ SETTINGS CHANGED DURING FACTOR TESTING.  
(1B) MOTOR FLA  
(1F) 115% FOR MX4PB-SD, 125% FOR MX4PB-HD  
(8D) TRIP

- STANDARD LEGEND**
- WIRE NODE SYMBOL MAY HAVE TERMINAL BLOCK
  - BENSRAW SUPPLIED TERMINAL BLOCK
  - TERMINAL STRIP
  - POWER CONNECTION
  - PC BOARD TERMINALS
  - TWISTED PAIR
  - TWISTED SHIELDED PAIR
  - SHIELDED WIRE
  - - - FIELD WIRING

**CHART 1**  
TORQUE SPECIFICATIONS FOR SOCKET HEAD SCREWS

SOCKET SIZE ACROSS FLATS (INCHES)	TORQUE POUNDS-INCHES
1/4	200
5/16	275
3/8	375
1/2	500

**OPTIONS AND CODE NUMBERS**

OPTION CODE NO.	DISPLAY	HEATER	CONTROL
	YES		

<b>REVISIONS</b> DO NOT SCALE DWG	THIRD ANGLE PROJECTION	UNLESS OTHERWISE SPECIFIED ALL DIMENSIONS IN INCHES INTERPRET DRAWING PER ASME Y14.5M-1994 TOLERANCES: .XX ± .03 .XXX ± .015 ANGLES ± 1°	<b>TITLE:</b> SCHEMATIC MODULAR REDUCED VOLTAGE SOLID STATE STARTER NEMA 4/12 WITH INTEGRAL BYPASS	SIGNATURES: DRW: BDA 3/16/20 CHD: NMK 3/16/20 ENG: BDA 3/16/20	DATE: 3/16/20	
	THIS DRAWING AND ALL INFORMATION CONTAINED HEREIN IS THE PROPERTY OF BENSRAW INC. AND MAY NOT BE REPRODUCED OR DIVULGED TO UNAUTHORIZED PERSONS WITHOUT THE EXPRESS WRITTEN CONSENT OF BENSRAW INC. IT IS PROVIDED SOLELY FOR THE CONVENIENCE OF THE USER AND SHALL BE RETURNED UPON REQUEST.		MATERIAL:	FINISH:	615 ALPHA DRIVE PITTSBURGH, PA. 15238 550 BRIGHT STREET LISTON, ONTARIO N4W 3W5	
	<b>BENSRAW</b>			SIZE: D DWG NO.: MX4PB-SD-030-4-4-HB SCALE: 1:1	REV: 1 SHEET 2 OF 2	