

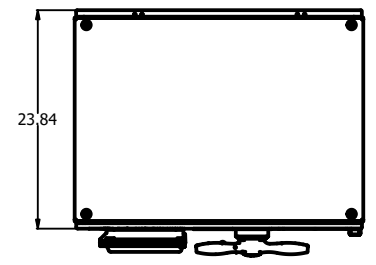
A
B
C
D
E
F
G
H
I
J
K
L
M
N

NOTES:

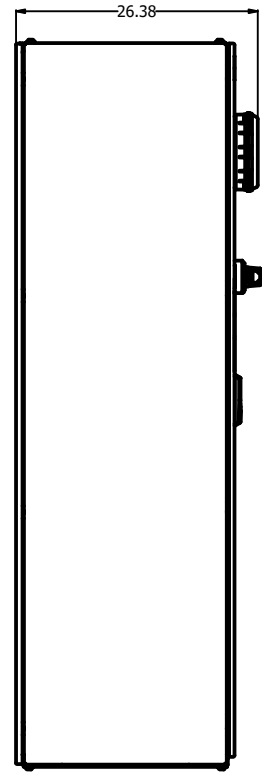
- 1 MINIMUM WIRE BENDING SPACE SHALL BE 16.00" FROM TOP OF CIRCUIT BREAKER POWER CONNECTION TO TOP OF ENCLOSURE.
- 2 ENSURE THAT ALL RIBBON CABLES ARE ROUTED AWAY FROM POWER CONDUCTORS.
- 3 MINIMUM WIRE BENDING SPACE SHALL BE 16.00" FROM BOTTOM OF POWERSTACK POWER CONNECTION TO BOTTOM OF ENCLOSURE.
- 4 ENCLOSURE LAYOUT IS DESIGNED FOR CABLE ENTRY/EXIT TO BE TOP/BOTTOM.

LABEL LEGEND

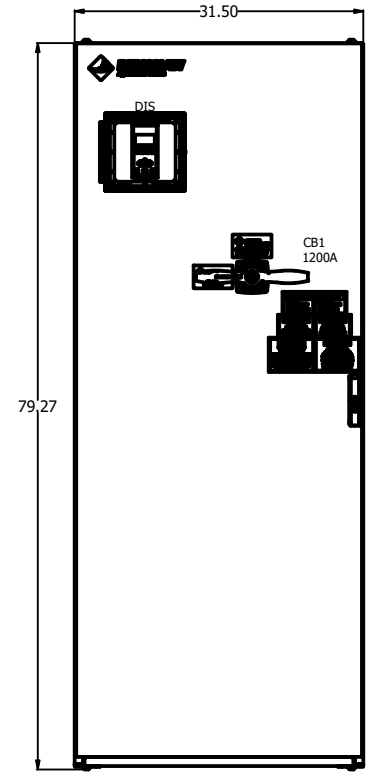
- CB1: CIRCUIT BREAKER
- DIS: EMX4I LCD DISPLAY/KEYPAD
- GND: GROUND LUG
- LVSS: EMX4I SOFT START (W/INTEGRAL BYPASS)
- TB1: TERMINAL BLOCKS
- CR1-2: CONTROL RELAYS
- T1: CONTROL POWER TRANSFORMER
- FU4-FU5: PRIMARY FUSES (T1)
- FU6: SECONDARY FUSE (T1)



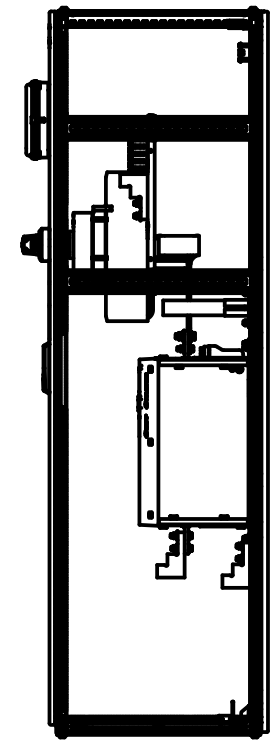
TOP VIEW



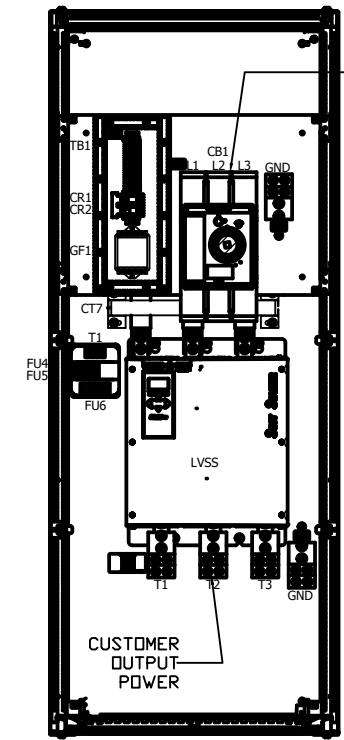
LEFT SIDE



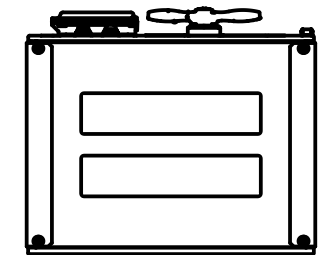
FRONT VIEW



RIGHT SIDE



PANEL VIEW

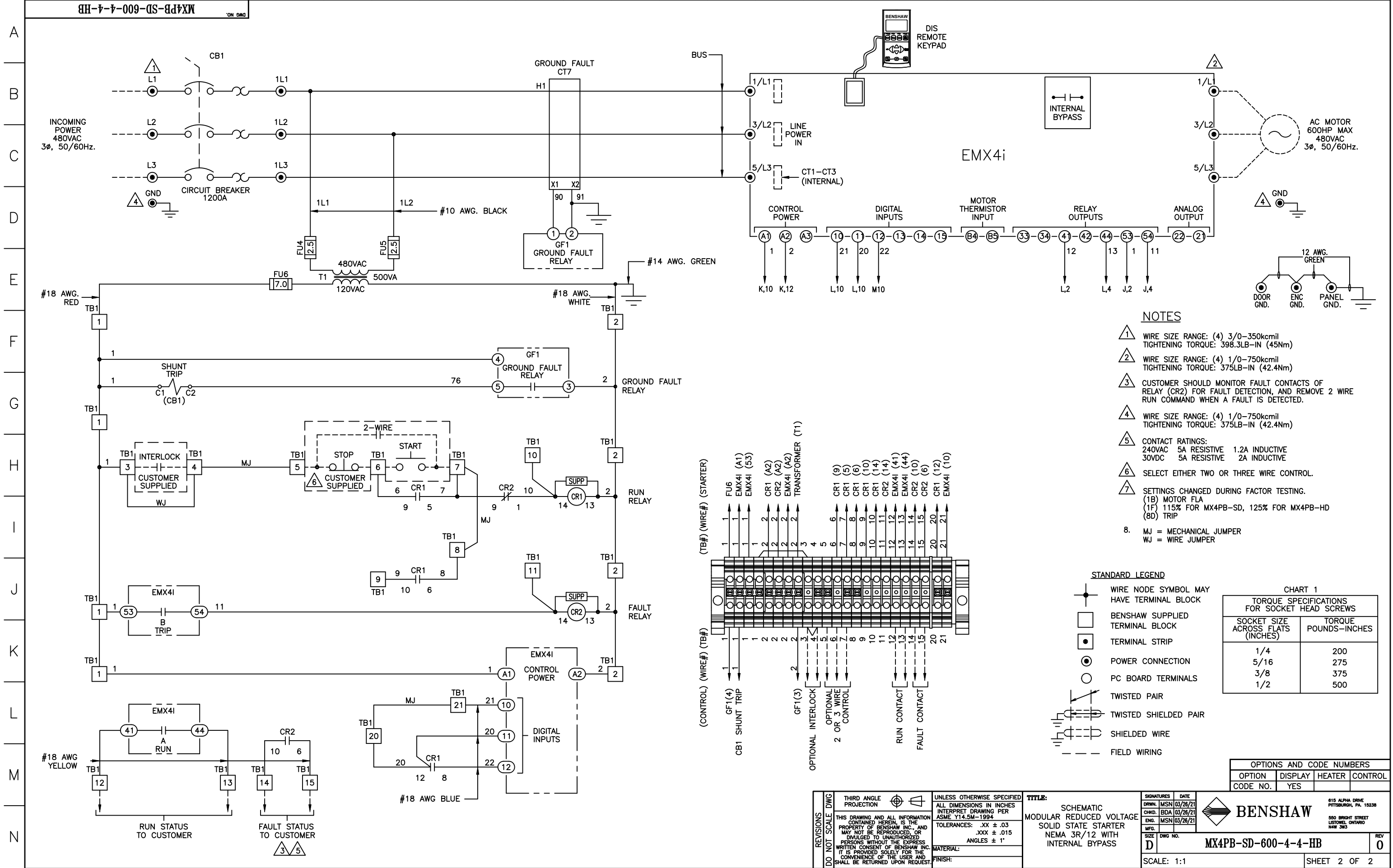


BOTTOM VIEW

OPTIONS AND CODE NUMBERS			
OPTION	DISPLAY	HEATER	CONTROL
CODE NO.	YES		

APPRD:	CHG BY:	CHANGE:	REVISIONS	DO NOT SCALE DWG	THIRD ANGLE PROJECTION	UNLESS OTHERWISE SPECIFIED ALL DIMENSIONS IN INCHES INTERPRET DRAWING PER ASME Y14.5M-1994 TOLERANCES: .XX ± .03 .XXX ± .015 ANGLES ± 1° MATERIAL: FINISH:	TITLE: ENCLOSURE LAYOUT MODULAR REDUCED VOLTAGE SOLID STATE STARTER NEMA 3R/12 WITH INTERNAL BYPASS	<table border="1"> <tr> <th>SIGNATURES</th> <th>DATE</th> </tr> <tr> <td>DRWN: MSN</td> <td>03/26/21</td> </tr> <tr> <td>CHKD: BDA</td> <td>03/26/21</td> </tr> <tr> <td>ENG: MSN</td> <td>03/26/21</td> </tr> <tr> <td>MFG:</td> <td></td> </tr> <tr> <td>SIZE: D</td> <td>DWG NO.</td> </tr> </table>	SIGNATURES	DATE	DRWN: MSN	03/26/21	CHKD: BDA	03/26/21	ENG: MSN	03/26/21	MFG:		SIZE: D	DWG NO.
SIGNATURES	DATE																			
DRWN: MSN	03/26/21																			
CHKD: BDA	03/26/21																			
ENG: MSN	03/26/21																			
MFG:																				
SIZE: D	DWG NO.																			

		815 ALPHA DRIVE PITTSBURGH, PA 15238 550 BRIGHT STREET LITTONEL, ONTARIO M4W 3W3
SCALE: 1:10		REV 0
SHEET 1 OF 2		



- NOTES**
- ① WIRE SIZE RANGE: (4) 3/0-350kcmil
TIGHTENING TORQUE: 398.3LB-IN (45Nm)
 - ② WIRE SIZE RANGE: (4) 1/0-750kcmil
TIGHTENING TORQUE: 375LB-IN (42.4Nm)
 - ③ CUSTOMER SHOULD MONITOR FAULT CONTACTS OF RELAY (CR2) FOR FAULT DETECTION, AND REMOVE 2 WIRE RUN COMMAND WHEN A FAULT IS DETECTED.
 - ④ WIRE SIZE RANGE: (4) 1/0-750kcmil
TIGHTENING TORQUE: 375LB-IN (42.4Nm)
 - ⑤ CONTACT RATINGS:
240VAC 5A RESISTIVE 1.2A INDUCTIVE
30VDC 5A RESISTIVE 2A INDUCTIVE
 - ⑥ SELECT EITHER TWO OR THREE WIRE CONTROL.
 - ⑦ SETTINGS CHANGED DURING FACTOR TESTING.
(1B) MOTOR FLA
(1F) 115% FOR MX4PB-SD, 125% FOR MX4PB-HD
(8D) TRIP
 - 8. MJ = MECHANICAL JUMPER
WJ = WIRE JUMPER

- STANDARD LEGEND**
- ⊙ WIRE NODE SYMBOL MAY HAVE TERMINAL BLOCK
 - BENSCHAW SUPPLIED TERMINAL BLOCK
 - TERMINAL STRIP
 - ⊙ POWER CONNECTION
 - PC BOARD TERMINALS
 - TWISTED PAIR
 - TWISTED SHIELDED PAIR
 - SHIELDED WIRE
 - - - FIELD WIRING

CHART 1
TORQUE SPECIFICATIONS FOR SOCKET HEAD SCREWS

SOCKET SIZE ACROSS FLATS (INCHES)	TORQUE POUNDS-INCHES
1/4	200
5/16	275
3/8	375
1/2	500

OPTIONS AND CODE NUMBERS

OPTION	DISPLAY	HEATER	CONTROL
CODE NO.	YES		

THIRD ANGLE PROJECTION
UNLESS OTHERWISE SPECIFIED ALL DIMENSIONS IN INCHES INTERPRET DRAWING PER ASME Y14.5M-1994
TOLERANCES: .XX ± .03
.XXX ± .015
ANGLES ± 1°
MATERIAL:
FINISH:

TITLE:
SCHEMATIC
MODULAR REDUCED VOLTAGE
SOLID STATE STARTER
NEMA 3R/12 WITH
INTERNAL BYPASS

REVISIONS
DO NOT SCALE DWG

REV 0
SCALE: 1:1
SHEET 2 OF 2

