

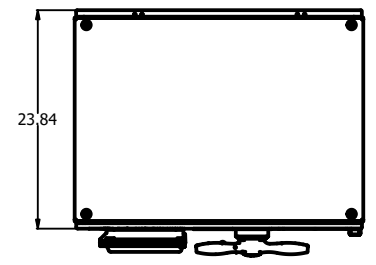
A  
B  
C  
D  
E  
F  
G  
H  
I  
J  
K  
L  
M  
N

**NOTES:**

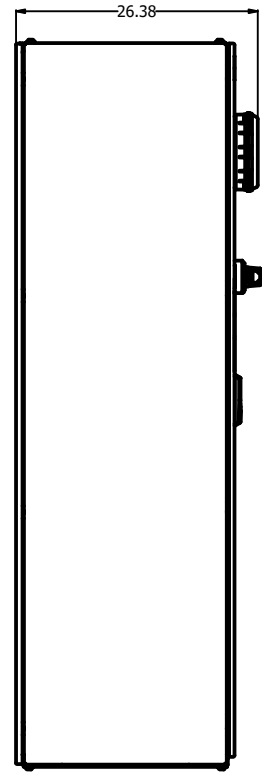
- 1 MINIMUM WIRE BENDING SPACE SHALL BE 16.00" FROM TOP OF CIRCUIT BREAKER POWER CONNECTION TO TOP OF ENCLOSURE.
- 2 ENSURE THAT ALL RIBBON CABLES ARE ROUTED AWAY FROM POWER CONDUCTORS.
- 3 MINIMUM WIRE BENDING SPACE SHALL BE 16.00" FROM BOTTOM OF POWERSTACK POWER CONNECTION TO BOTTOM OF ENCLOSURE.
- 4 ENCLOSURE LAYOUT IS DESIGNED FOR CABLE ENTRY/EXIT TO BE TOP/BOTTOM.

**LABEL LEGEND**

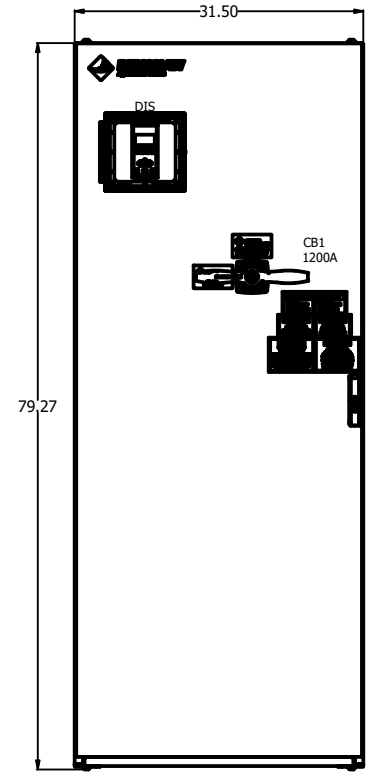
- CB1: CIRCUIT BREAKER
- DIS: EMX4I LCD DISPLAY/KEYPAD
- GND: GROUND LUG
- LVSS: EMX4I SOFT START (W/INTEGRAL BYPASS)
- TB1: TERMINAL BLOCKS
- CR1-2: CONTROL RELAYS
- T1: CONTROL POWER TRANSFORMER
- FU4-FU5: PRIMARY FUSES (T1)
- FU6: SECONDARY FUSE (T1)



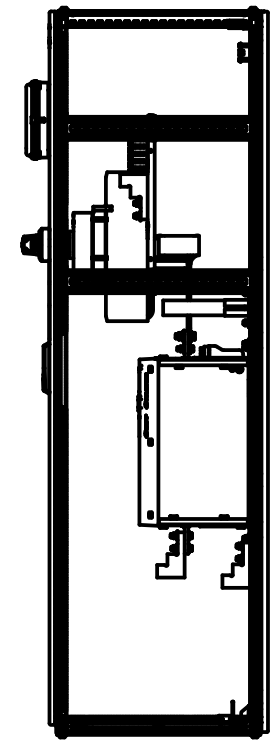
TOP VIEW



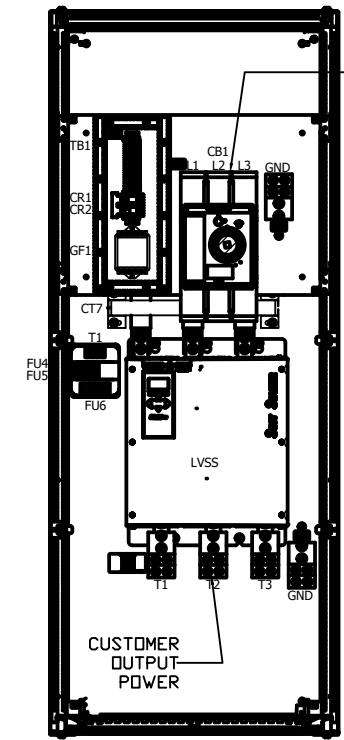
LEFT SIDE



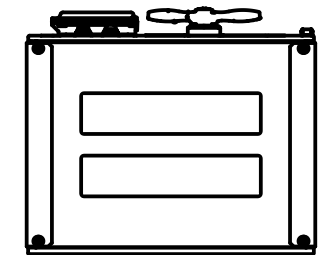
FRONT VIEW



RIGHT SIDE



PANEL VIEW



BOTTOM VIEW

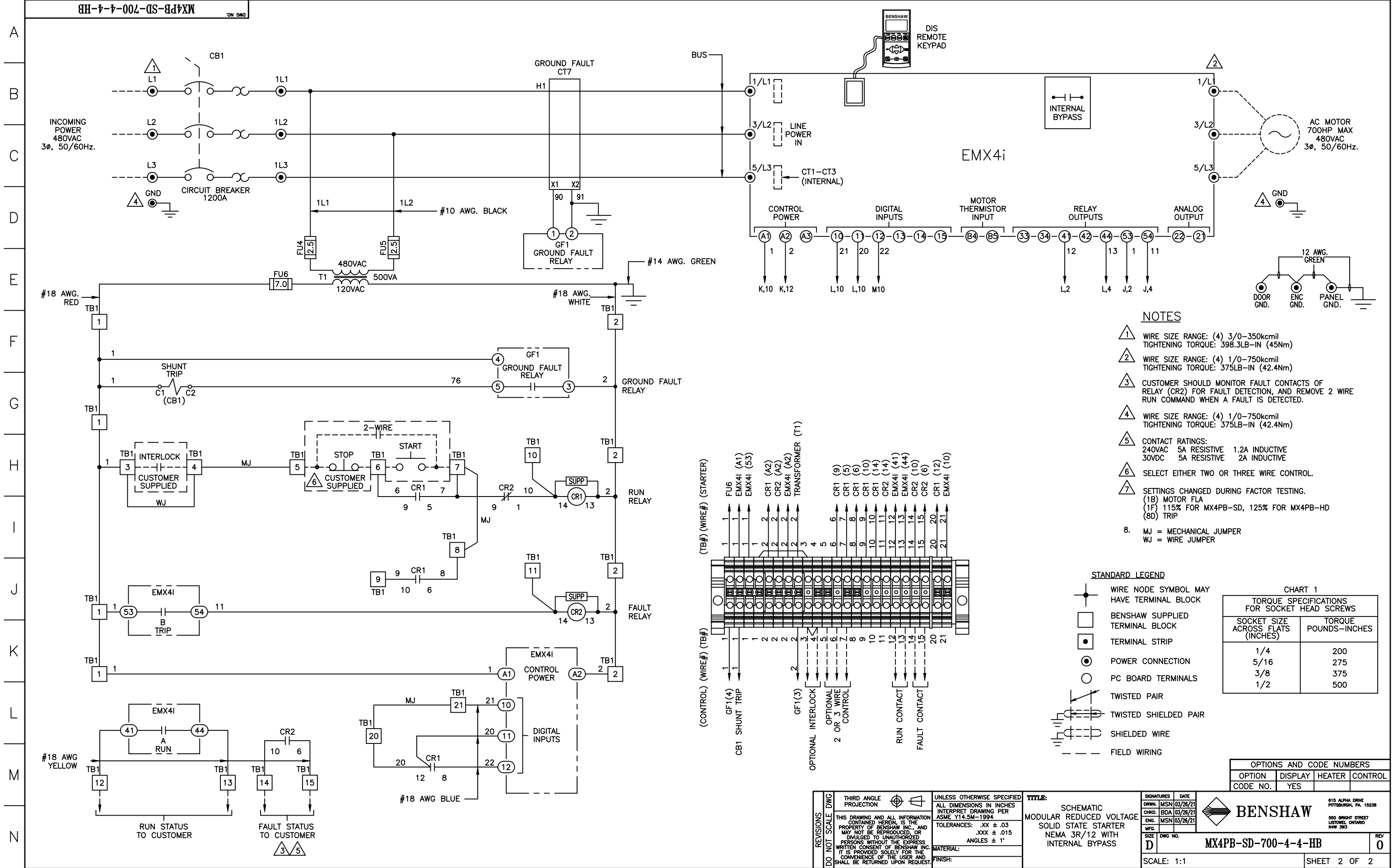
OPTIONS AND CODE NUMBERS			
OPTION	DISPLAY	HEATER	CONTROL
CODE NO.	YES		

APPRD:	CHG BY:	CHANGE:	REVISIONS	DO NOT SCALE DWG	THIRD ANGLE PROJECTION	UNLESS OTHERWISE SPECIFIED ALL DIMENSIONS IN INCHES INTERPRET DRAWING PER ASME Y14.5M-1994 TOLERANCES: .XX ± .03 .XXX ± .015 ANGLES ± 1° MATERIAL: FINISH:	TITLE: ENCLOSURE LAYOUT MODULAR REDUCED VOLTAGE SOLID STATE STARTER NEMA 3R/12 WITH INTERNAL BYPASS	<table border="1"> <tr> <th>SIGNATURES</th> <th>DATE</th> </tr> <tr> <td>DRWN: MSN</td> <td>03/26/21</td> </tr> <tr> <td>CHKD: BDA</td> <td>03/26/21</td> </tr> <tr> <td>ENG: MSN</td> <td>03/26/21</td> </tr> <tr> <td>MFG:</td> <td></td> </tr> <tr> <td>SIZE: D</td> <td>DWG NO.</td> </tr> </table>	SIGNATURES	DATE	DRWN: MSN	03/26/21	CHKD: BDA	03/26/21	ENG: MSN	03/26/21	MFG:		SIZE: D	DWG NO.
SIGNATURES	DATE																			
DRWN: MSN	03/26/21																			
CHKD: BDA	03/26/21																			
ENG: MSN	03/26/21																			
MFG:																				
SIZE: D	DWG NO.																			

		615 ALPHA DRIVE PITTSBURGH, PA. 15238 550 BRIGHT STREET LITTONEL, ONTARIO M4W 3W3	
		SCALE: 1:10	SHEET 1 OF 2

THIS DRAWING AND ALL INFORMATION CONTAINED HEREIN, IS THE PROPERTY OF BENSHAW INC. AND MAY NOT BE REPRODUCED, OR DIVULGED TO UNAUTHORIZED PERSONS WITHOUT THE EXPRESS WRITTEN CONSENT OF BENSHAW INC. IT IS PROVIDED SOLELY FOR THE CONVENIENCE OF THE USER AND SHALL BE RETURNED UPON REQUEST.	TITLE: ENCLOSURE LAYOUT MODULAR REDUCED VOLTAGE SOLID STATE STARTER NEMA 3R/12 WITH INTERNAL BYPASS	SIGNATURES DRWN: MSN 03/26/21 CHKD: BDA 03/26/21 ENG: MSN 03/26/21 MFG: SIZE: D DWG NO.	DATE 03/26/21 03/26/21 03/26/21
---	--	---	--

**BENSHAW**  
MX4PB-SD-700-4-4-HB  
REV 0



- NOTES**
- ① WIRE SIZE RANGE: (4) 3/0-350kcmil  
TIGHTENING TORQUE: 398.3LB-IN (45Nm)
  - ② WIRE SIZE RANGE: (4) 1/0-750kcmil  
TIGHTENING TORQUE: 375LB-IN (42.4Nm)
  - ③ CUSTOMER SHOULD MONITOR FAULT CONTACTS OF RELAY (CR2) FOR FAULT DETECTION, AND REMOVE 2 WIRE RUN COMMAND WHEN A FAULT IS DETECTED.
  - ④ WIRE SIZE RANGE: (4) 1/0-750kcmil  
TIGHTENING TORQUE: 375LB-IN (42.4Nm)
  - ⑤ CONTACT RATINGS:  
240VAC 5A RESISTIVE 1.2A INDUCTIVE  
30VDC 5A RESISTIVE 2A INDUCTIVE
  - ⑥ SELECT EITHER TWO OR THREE WIRE CONTROL.
  - ⑦ SETTINGS CHANGED DURING FACTOR TESTING.  
(1B) MOTOR FLA  
(1F) 115% FOR MX4PB-SD, 125% FOR MX4PB-HD  
(8D) TRIP
  - 8. MJ = MECHANICAL JUMPER  
WJ = WIRE JUMPER

- STANDARD LEGEND**
- ⊙ WIRE NODE SYMBOL MAY HAVE TERMINAL BLOCK
  - BENSHAW SUPPLIED TERMINAL BLOCK
  - TERMINAL STRIP
  - ⊙ POWER CONNECTION
  - PC BOARD TERMINALS
  - TWISTED PAIR
  - TWISTED SHIELDED PAIR
  - SHIELDED WIRE
  - - - FIELD WIRING

**CHART 1**  
TORQUE SPECIFICATIONS FOR SOCKET HEAD SCREWS

SOCKET SIZE ACROSS FLATS (INCHES)	TORQUE POUNDS-INCHES
1/4	200
5/16	275
3/8	375
1/2	500

**OPTIONS AND CODE NUMBERS**

OPTION	DISPLAY	HEATER	CONTROL
CODE NO.	YES		

THIRD ANGLE PROJECTION  
UNLESS OTHERWISE SPECIFIED ALL DIMENSIONS IN INCHES INTERPRET DRAWING PER ASME Y14.5M-1994  
TOLERANCES: .XX ± .03  
.XXX ± .015  
ANGLES ± 1°  
MATERIAL:  
FINISH:

**TITLE:**  
SCHEMATIC  
MODULAR REDUCED VOLTAGE  
SOLID STATE STARTER  
NEMA 3R/12 WITH  
INTERNAL BYPASS

REVISIONS  
DO NOT SCALE DWG

615 ALPHA DRIVE  
PITTSBURGH, PA 15238  
550 BRIGHT STREET  
LITTONEL, ONTARIO  
M4W 3W5

**BENSHAW**

MSN 03/26/21  
BDA 03/26/21  
MSN 03/26/21

SCALE: 1:1

SHEET 2 OF 2