



BENSHAW

Applied Motor Controls

AN AMCONEX GROUP COMPANY



**The Next Generation
Medium Voltage Soft Starter**

MVRNX Series

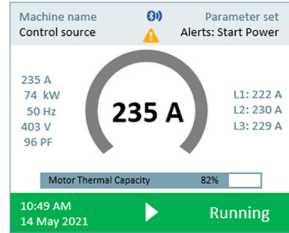
“A generational change in processor speed, protection/monitoring functionality and communications capabilities.”

- Bluetooth® Connectivity to Mobile App
- Seamless Troubleshooting
- Advanced Monitoring & Protection
- Easy-to-Use HMI Operator & Display
- Shortened Commissioning Times
- Standard & Heavy Duty Ratings
- Horizontal Bus Options to 2000A
- Stand-Alone Units or Lineups
- Configurable Options:
 - Seismic Ratings
 - Arc Resistant Design
 - Communication

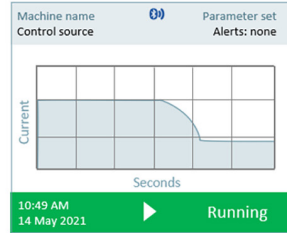


Genius Motor Control

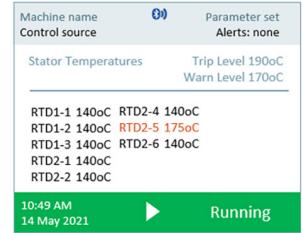
MVRNX SERIES - KEY FEATURES



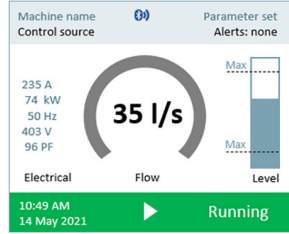
Electrical



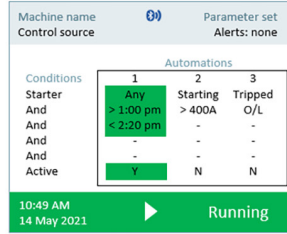
Time-Based Graphs



RTD Screens (x 3 stator, Bearing Other)



Pump Screen



Automation Screen (aka soft PLC)

Machine	Status	Current
Machine 1	Running	0 A
Machine 2	Starting	0 A
Machine 3	Running	0 A
Machine 4	Running	0 A
Machine 5	Ready	0 A
Machine 6	Ready	0 A
Machine 7	Tripped	0 A
Machine 8	Ready	0 A

Multi-Motor Screen

Expandable system

- HMI with full-color display (panel-mount)
- DIN rail-mounted control modules

Built-in connectivity

- Bluetooth Low Energy (BLE) wireless connection to mobile app
- Built-in Modbus RTU
- 6 x digital inputs / 4 x relay outputs
- Analog output with digital offset and span adjustment
- USB-A socket
- CAN bus-based expansion to other modules

Easy to understand interface

- Plain text menus and displays
- Color-coded status bar
- Informative on-screen metering
- Real-time clock
- Programmable metering
- Resettable run time and power consumption metering
- Multi-language menus and displays
- Passcode protection

Versatile starting/stopping options

- Constant current
- Current/Voltage/Power ramps
- TruTorque
- 2 and 3 wire start/stop control

Customizable protection

- Motor overload (thermal model)
- Undercurrent/Overcurrent
- Underpower/Overpower
- Undervoltage/Overvoltage
- Current imbalance
- Stalled motor protection
- Excess start time
- Line frequency
- Phase sequence
- Phase loss (single phasing)
- Power factor leading/lagging
- Residual or zero-sequence ground fault protection
- Backspin/restart timer
- Starts per hour
- Time between starts
- Power loss ride-through

Motor control modes

- Soft start - supports two motor sets
- Smart ATL - injection test compatible
- Smart Wye/Delta

Commissioning/troubleshooting tools

- Extensive trip and event logging
- Versatile trip actions
- High-speed waveform capture
- Self-test and run simulation mode

Cybersecurity

- Secure Bluetooth pairing
- PIN number protection
- Digitally signed firmware

Ideal for retrofit applications

- Existing/'legacy' soft starters
- ATL

Optional features

- Seismic ratings
- Arc resistant design

Optional expansion modules

- 8 or 16 RTD inputs, O/L biasing
- Ethernet/IP
- CAN bus isolation



Benshaw, Inc.
 615 Alpha Drive
 Pittsburgh, PA 15238 United States
 Toll Free: 1-800-441-8235
 Phone: 412-968-0100
 Fax: 412-968-5415
 Benshaw.com

Benshaw Canada Controls, Inc.
 550 Bright Street East
 Listowel, Ontario N4W 3W3
 Canada